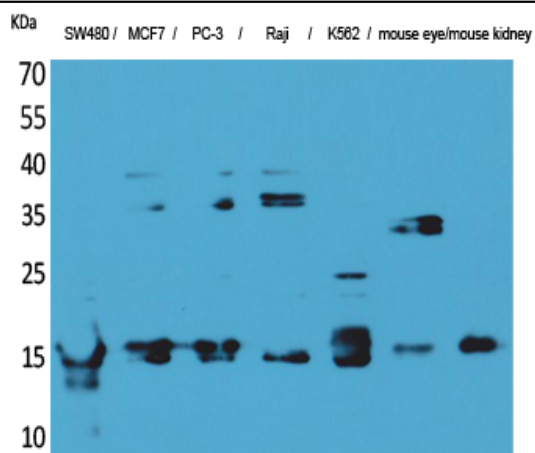


MK Polyclonal Antibody

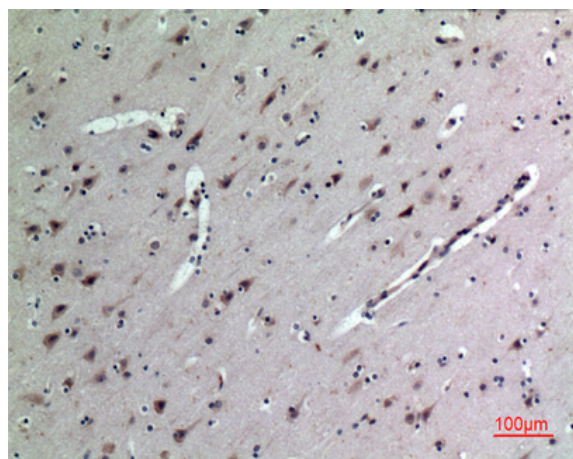
Catalog No :	YT5177
Reactivity :	Human;Rat
Applications :	WB;IHC;IF;ELISA
Target :	MK
Gene Name :	MDK
Protein Name :	Midkine
Human Gene Id :	4192
Human Swiss Prot No :	P21741
Mouse Swiss Prot No :	P12025
Rat Gene Id :	81517
Rat Swiss Prot No :	Q9R1S9
Immunogen :	The antiserum was produced against synthesized peptide derived from the Internal region of human MDK. AA range:94-143
Specificity :	MK Polyclonal Antibody detects endogenous levels of MK protein.
Formulation :	Liquid in PBS containing 50% glycerol, 0.5% BSA and 0.02% sodium azide.
Source :	Polyclonal, Rabbit,IgG
Dilution :	WB 1:500 - 1:2000. IHC: 1:100-300 ELISA: 1:20000.. IF 1:50-200
Purification :	The antibody was affinity-purified from rabbit antiserum by affinity-chromatography using epitope-specific immunogen.
Concentration :	1 mg/ml

Storage Stability :	-15 °C to -25 °C/1 year(Do not lower than -25 °C)
Observed Band :	18kD
Background :	<p>This gene encodes a member of a small family of secreted growth factors that binds heparin and responds to retinoic acid. The encoded protein promotes cell growth, migration, and angiogenesis, in particular during tumorigenesis. This gene has been targeted as a therapeutic for a variety of different disorders. Alternatively spliced transcript variants encoding multiple isoforms have been observed. [provided by RefSeq, Jul 2012],</p>
Function :	<p>function:Has heparin binding activity, and growth promoting activity. Involved in neointima formation after arterial injury, possibly by mediating leukocyte recruitment. Also involved in early fetal adrenal gland development.,induction:By heparin and retinoic acid.,similarity:Belongs to the pleiotrophin family.,subunit:Homodimer.,</p>
Subcellular Location :	Secreted.
Expression :	Expressed in various tumor cell lines. In insulinoma tissue predominantly expressed in precancerous lesions.
Tag :	hot
Sort :	9656
No4 :	1
Host :	Rabbit
Modifications :	Unmodified

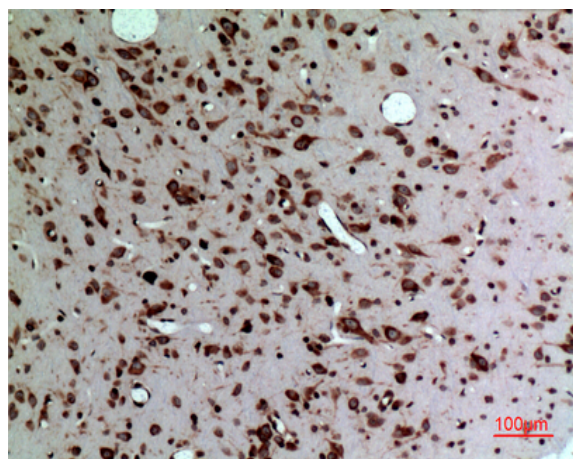
Products Images



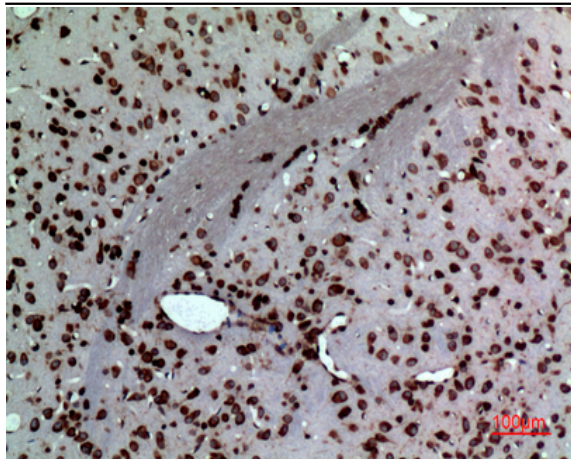
Western Blot analysis of SW480, MCF7, PC-3, Raji, K562, mouse eye, mouse kidney cells using MK Polyclonal Antibody. Secondary antibody(catalog#:RS0002) was diluted at 1:20000



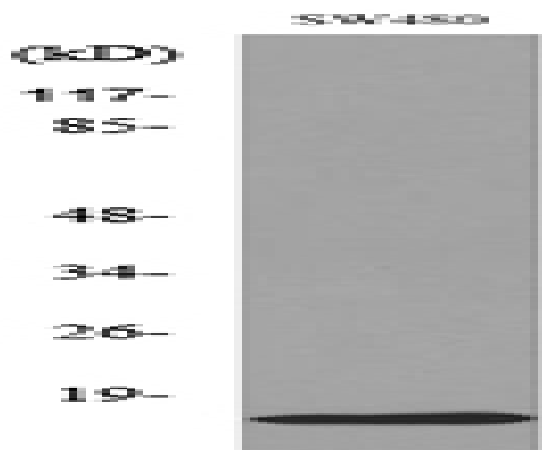
Immunohistochemical analysis of paraffin-embedded human-brain, antibody was diluted at 1:100



Immunohistochemical analysis of paraffin-embedded rat-brain, antibody was diluted at 1:100



Immunohistochemical analysis of paraffin-embedded rat-brain, antibody was diluted at 1:100



Western blot analysis of lysate from SW480 cells, using MDK Antibody.