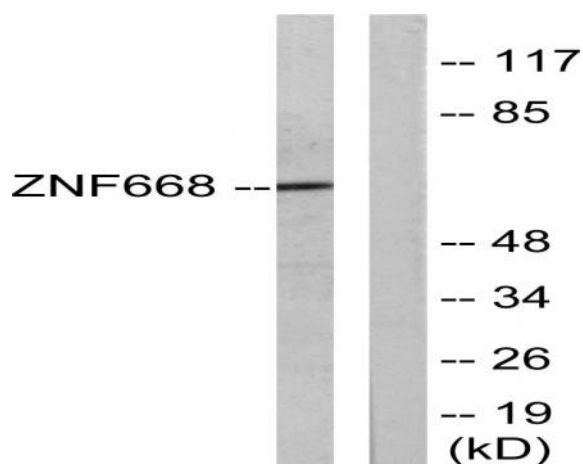


ZNF668 Polyclonal Antibody

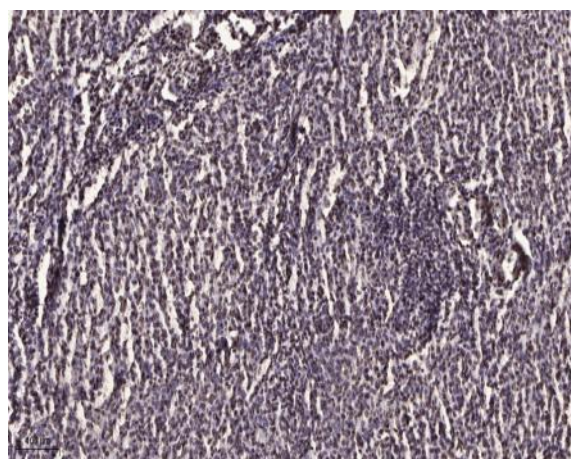
Catalog No :	YT4977
Reactivity :	Human;Mouse
Applications :	WB;IHC;IF;ELISA
Target :	ZNF668
Gene Name :	ZNF668
Protein Name :	Zinc finger protein 668
Human Gene Id :	79759
Human Swiss Prot No :	Q96K58
Mouse Gene Id :	244219
Mouse Swiss Prot No :	Q8K2R5
Immunogen :	The antiserum was produced against synthesized peptide derived from human ZNF668. AA range:271-320
Specificity :	ZNF668 Polyclonal Antibody detects endogenous levels of ZNF668 protein.
Formulation :	Liquid in PBS containing 50% glycerol, 0.5% BSA and 0.02% sodium azide.
Source :	Polyclonal, Rabbit,IgG
Dilution :	WB 1:500 - 1:2000. IHC 1:100 - 1:300. IF 1:200 - 1:1000. ELISA: 1:10000. Not yet tested in other applications.
Purification :	The antibody was affinity-purified from rabbit antiserum by affinity-chromatography using epitope-specific immunogen.
Concentration :	1 mg/ml
Storage Stability :	-15°C to -25°C/1 year(Do not lower than -25°C)

Observed Band :	68kD
Background :	function:May be involved in transcriptional regulation.,similarity:Belongs to the krueppel C2H2-type zinc-finger protein family.,similarity:Contains 16 C2H2-type zinc fingers.,
Function :	function:May be involved in transcriptional regulation.,similarity:Belongs to the krueppel C2H2-type zinc-finger protein family.,similarity:Contains 16 C2H2-type zinc fingers.,
Subcellular Location :	Nucleus .
Expression :	Brain,Mammary gland,Placenta,Skin,
Sort :	24745
No4 :	1

Products Images



Western blot analysis of lysates from Jurkat cells, using ZNF668 Antibody. The lane on the right is blocked with the synthesized peptide.



Immunohistochemical analysis of paraffin-embedded human brain tumor. 1, Antibody was diluted at 1:200(4° overnight). 2, Tris-EDTA,pH9.0 was used for antigen retrieval. 3,Secondary antibody was diluted at 1:200(room temperature, 45min).