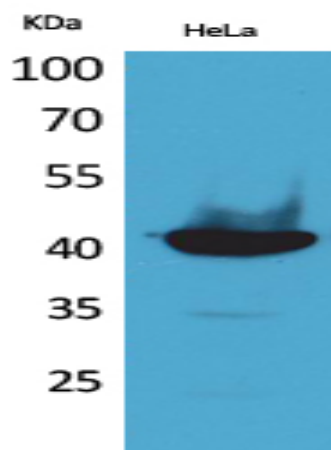


Cyclophilin D Polyclonal Antibody

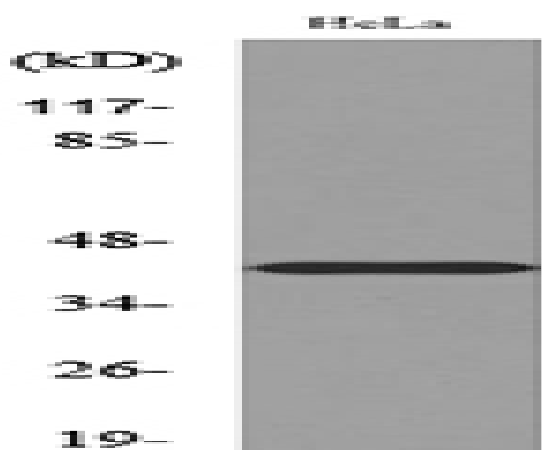
Catalog No :	YT5144
Reactivity :	Human;Mouse;Rat
Applications :	WB;IHC;IF;ELISA
Target :	Cyclophilin D
Fields :	>>Necroptosis;>>Cellular senescence;>>Alzheimer disease;>>Pathways of neurodegeneration - multiple diseases;>>Shigellosis
Gene Name :	PPID
Protein Name :	Peptidyl-prolyl cis-trans isomerase D
Human Gene Id :	5481
Human Swiss Prot No :	Q08752
Mouse Gene Id :	67738
Mouse Swiss Prot No :	Q9CR16
Rat Gene Id :	361967
Rat Swiss Prot No :	Q6DGG0
Immunogen :	The antiserum was produced against synthesized peptide derived from the C-terminal region of human PPID. AA range:321-370
Specificity :	Cyclophilin D Polyclonal Antibody detects endogenous levels of Cyclophilin D protein.
Formulation :	Liquid in PBS containing 50% glycerol, 0.5% BSA and 0.02% sodium azide.
Source :	Polyclonal, Rabbit,IgG
Dilution :	WB 1:500 - 1:2000. IHC: 1:100-300 ELISA: 1:20000.. IF 1:50-200

Purification :	The antibody was affinity-purified from rabbit antiserum by affinity-chromatography using epitope-specific immunogen.
Concentration :	1 mg/ml
Storage Stability :	-15°C to -25°C/1 year(Do not lower than -25°C)
Observed Band :	40kD
Cell Pathway :	Calcium;Parkinson's disease;Huntington's disease;
Background :	The protein encoded by this gene is a member of the peptidyl-prolyl cis-trans isomerase (PPIase) family. PPIases catalyze the cis-trans isomerization of proline imidic peptide bonds in oligopeptides and accelerate the folding of proteins. This protein has been shown to possess PPIase activity and, similar to other family members, can bind to the immunosuppressant cyclosporin A. [provided by RefSeq, Jul 2008],
Function :	catalytic activity:Peptidylproline (omega=180) = peptidylproline (omega=0).,enzyme regulation:Less sensitive to inhibition by cyclosporin A than is CYP-18.,function:PPIases accelerate the folding of proteins.,function:PPIases accelerate the folding of proteins. It catalyzes the cis-trans isomerization of proline imidic peptide bonds in oligopeptides.,online information:Cyclophilin entry,similarity:Belongs to the cyclophilin-type PPIase family.,similarity:Belongs to the cyclophilin-type PPIase family. PPIase D subfamily.,similarity:Contains 1 PPIase cyclophilin-type domain.,similarity:Contains 3 TPR repeats.,subunit:Binds ESR1.,tissue specificity:Widely expressed.,
Subcellular Location :	Cytoplasm . Nucleus, nucleolus . Nucleus, nucleoplasm .
Expression :	Widely expressed.
Sort :	4759
Host :	Rabbit
Modifications :	Unmodified

Products Images



Western Blot analysis of HeLa cells using Cyclophilin D Polyclonal Antibody. Secondary antibody(catalog#:RS0002) was diluted at 1:20000



Western blot analysis of lysate from HeLa cells, using PPID Antibody.