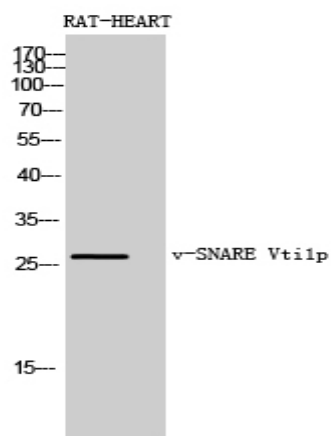


## v-SNARE Vti1p Polyclonal Antibody

|                              |   |
|------------------------------|---|
| <b>Catalog No :</b>          | YT4895  |
| <b>Reactivity :</b>          | Human;Mouse;Rat   |
| <b>Applications :</b>        | WB;ELISA  |
| <b>Target :</b>              | v-SNARE Vti1p   |
| <b>Fields :</b>              | >>SNARE interactions in vesicular transport   |
| <b>Gene Name :</b>           | VTI1B   |
| <b>Protein Name :</b>        | Vesicle transport through interaction with t-SNAREs homolog 1B  |
| <b>Human Gene Id :</b>       | 10490   |
| <b>Human Swiss Prot No :</b> | Q9UEU0  |
| <b>Mouse Swiss Prot No :</b> | O88384  |
| <b>Rat Swiss Prot No :</b>   | P58200  |
| <b>Immunogen :</b>           | Synthesized peptide derived from the Internal region of human v-SNARE Vti1p.  |
| <b>Specificity :</b>         | v-SNARE Vti1p Polyclonal Antibody detects endogenous levels of v-SNARE Vti1p protein.                                 |
| <b>Formulation :</b>         | Liquid in PBS containing 50% glycerol, 0.5% BSA and 0.02% sodium azide.   |
| <b>Source :</b>              | Polyclonal, Rabbit,IgG  |
| <b>Dilution :</b>            | WB 1:500 - 1:2000. ELISA: 1:10000. Not yet tested in other applications.  |
| <b>Purification :</b>        | The antibody was affinity-purified from rabbit antiserum by affinity-chromatography using epitope-specific immunogen. |
| <b>Concentration :</b>       | 1 mg/ml   |

|                               |  |
|-------------------------------|--|
| <b>Storage Stability :</b>    | -15 °C to -25 °C/1 year(Do not lower than -25 °C)  |
| <b>Observed Band :</b>        | 26kD   |
| <b>Cell Pathway :</b>         | SNARE interactions in vesicular transport;   |
| <b>Background :</b>           | function:V-SNARE that mediates vesicle transport pathways through interactions with t-SNAREs on the target membrane. These interactions are proposed to mediate aspects of the specificity of vesicle trafficking and to promote fusion of the lipid bilayers. May be concerned with increased secretion of cytokines associated with cellular senescence.,similarity:Belongs to the VTI1 family.,subunit:Found in a complex with VAMP8 and STX7 in the liver. Forms a SNARE complex with STX7, STX8 and VAMP8 which functions in the homotypic fusion of late endosomes. Part of the SNARE core complex containing STX7, STX8 and VAMP8.,tissue specificity:Expressed in all tissues examined., |
| <b>Function :</b>             | function:V-SNARE that mediates vesicle transport pathways through interactions with t-SNAREs on the target membrane. These interactions are proposed to mediate aspects of the specificity of vesicle trafficking and to promote fusion of the lipid bilayers. May be concerned with increased secretion of cytokines associated with cellular senescence.,similarity:Belongs to the VTI1 family.,subunit:Found in a complex with VAMP8 and STX7 in the liver. Forms a SNARE complex with STX7, STX8 and VAMP8 which functions in the homotypic fusion of late endosomes. Part of the SNARE core complex containing STX7, STX8 and VAMP8.,tissue specificity:Expressed in all tissues examined., |
| <b>Subcellular Location :</b> | Early endosome membrane ; Single-pass type IV membrane protein . Late endosome membrane ; Single-pass type IV membrane protein . Lysosome membrane . Cytoplasmic granule . Recycling endosome membrane ; Single-pass type IV membrane protein .  |
| <b>Expression :</b>           | Expressed in all tissues examined.   |
| <b>Sort :</b>                 | 24216  |
| <b>No4 :</b>                  | 1  |

## Products Images



Western Blot analysis of RAT-HEART cells using v-SNARE Vti1p Polyclonal Antibody diluted at 1:1000. Secondary antibody(catalog#:RS0002) was diluted at 1:20000