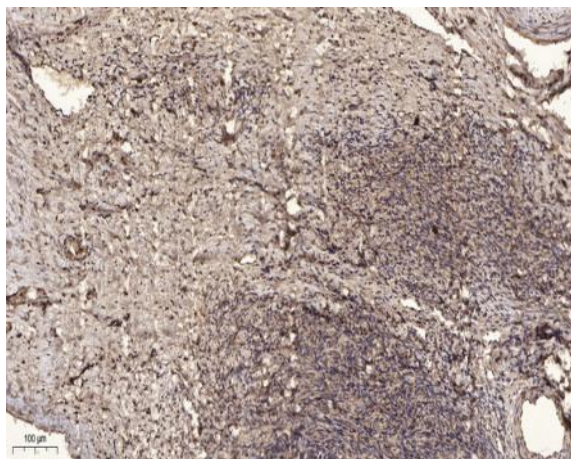


## VPS54 Polyclonal Antibody

<b>Catalog No :</b>	YT4890
<b>Reactivity :</b>	Human;Rat;Mouse;
<b>Applications :</b>	IHC;IF;ELISA
<b>Target :</b>	VPS54
<b>Gene Name :</b>	VPS54
<b>Protein Name :</b>	Vacuolar protein sorting-associated protein 54
<b>Human Gene Id :</b>	51542
<b>Human Swiss Prot No :</b>	Q9P1Q0
<b>Mouse Swiss Prot No :</b>	Q5SPW0
<b>Immunogen :</b>	Synthesized peptide derived from the Internal region of human VPS54.
<b>Specificity :</b>	VPS54 Polyclonal Antibody detects endogenous levels of VPS54 protein.
<b>Formulation :</b>	Liquid in PBS containing 50% glycerol, 0.5% BSA and 0.02% sodium azide.
<b>Source :</b>	Polyclonal, Rabbit,IgG
<b>Dilution :</b>	IHC 1:100 - 1:300. ELISA: 1:40000.. IF 1:50-200
<b>Purification :</b>	The antibody was affinity-purified from rabbit antiserum by affinity-chromatography using epitope-specific immunogen.
<b>Concentration :</b>	1 mg/ml
<b>Storage Stability :</b>	-15°C to -25°C/1 year(Do not lower than -25°C)
<b>Molecularweight :</b>	111kD

<b>Background :</b>	This gene encodes for a protein that in yeast forms part of a trimeric vacuolar-protein-sorting complex that is required for retrograde transport of proteins from prevacuoles to the late Golgi compartment. As in yeast, mammalian Vps54 proteins contain a coiled-coil region and dileucine motifs. Alternative splicing results in multiple transcript variants encoding different isoforms [provided by RefSeq, Jul 2008],
<b>Function :</b>	function:May be involved in retrograde transport from early and late endosomes to late Golgi.,similarity:Belongs to the VPS54 family.,subunit:Component of the Golgi-associated retrograde protein (GARP) complex, also called VFT (VPS fifty-three) complex, composed of VPS52, VPS53 and VPS54.,
<b>Subcellular Location :</b>	Golgi apparatus, trans-Golgi network . Membrane . Associates with membranes in an EIPR1-independent manner. .
<b>Expression :</b>	Hepatoma,Placenta,Skin,Testis,
<b>Sort :</b>	24208
<b>No4 :</b>	1

## Products Images



Immunohistochemical analysis of paraffin-embedded human oophoroma. 1, Antibody was diluted at 1:200(4° overnight). 2, Tris-EDTA,pH9.0 was used for antigen retrieval. 3,Secondary antibody was diluted at 1:200(room temperature, 45min).