

## ZSCAN22 Polyclonal Antibody

<b>Catalog No :</b>	YT4998
<b>Reactivity :</b>	Human;Rat;Mouse;
<b>Applications :</b>	WB;IHC;IF;ELISA
<b>Target :</b>	ZSCAN22
<b>Gene Name :</b>	ZSCAN22
<b>Protein Name :</b>	Zinc finger and SCAN domain-containing protein 22
<b>Human Gene Id :</b>	342945
<b>Human Swiss Prot No :</b>	P10073
<b>Immunogen :</b>	The antiserum was produced against synthesized peptide derived from human ZSCAN22. AA range:321-370
<b>Specificity :</b>	ZSCAN22 Polyclonal Antibody detects endogenous levels of ZSCAN22 protein.
<b>Formulation :</b>	Liquid in PBS containing 50% glycerol, 0.5% BSA and 0.02% sodium azide.
<b>Source :</b>	Polyclonal, Rabbit,IgG
<b>Dilution :</b>	WB 1:500 - 1:2000. IHC 1:100 - 1:300. ELISA: 1:10000.. IF 1:50-200
<b>Purification :</b>	The antibody was affinity-purified from rabbit antiserum by affinity-chromatography using epitope-specific immunogen.
<b>Concentration :</b>	1 mg/ml
<b>Storage Stability :</b>	-15°C to -25°C/1 year(Do not lower than -25°C)
<b>Observed Band :</b>	55kD
<b>Background :</b>	function:May be involved in transcriptional regulation.,PTM:Phosphorylated upon DNA damage, probably by ATM or ATR.,similarity:Belongs to the krueppel

C2H2-type zinc-finger protein family.,similarity:Contains 1 SCAN box domain.,similarity:Contains 8 C2H2-type zinc fingers.,

**Function :**

function:May be involved in transcriptional regulation.,PTM:Phosphorylated upon DNA damage, probably by ATM or ATR.,similarity:Belongs to the krueppel C2H2-type zinc-finger protein family.,similarity:Contains 1 SCAN box domain.,similarity:Contains 8 C2H2-type zinc fingers.,

**Subcellular Location :**

Nucleus .

**Expression :**

Fetal kidney,Placenta,Uterus,

**Sort :**

24793

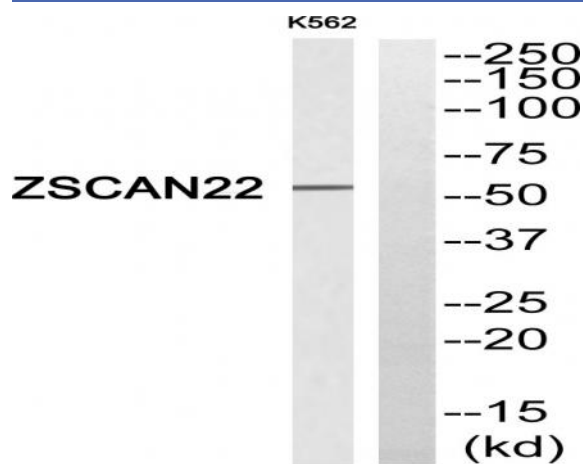
**Host :**

Rabbit

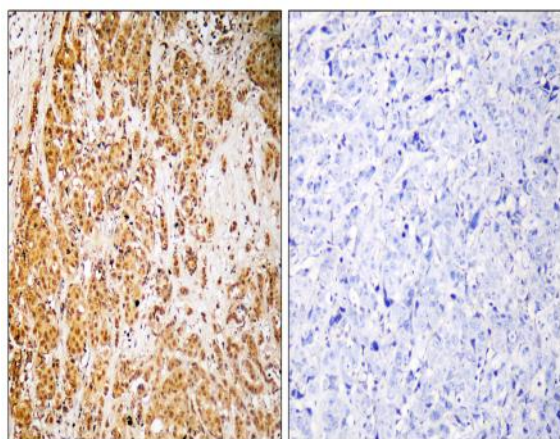
**Modifications :**

Unmodified

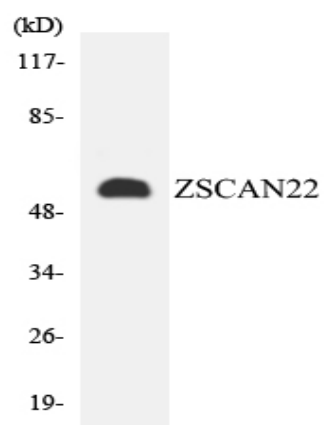
## Products Images



Western blot analysis of ZSCAN22 Antibody. The lane on the right is blocked with the ZSCAN22 peptide.



Immunohistochemistry analysis of paraffin-embedded human brain, using ZSCAN22 Antibody. The lane on the right is blocked with the ZSCAN22 peptide.



Western blot analysis of the lysates from HepG2 cells using ZSCAN22 antibody.