

ZSCAN16 Polyclonal Antibody

Catalog No :	YT4997
Reactivity :	Human;Mouse
Applications :	WB;IHC;IF;ELISA
Target :	ZSCAN16
Gene Name :	ZSCAN16
Protein Name :	Zinc finger and SCAN domain-containing protein 16
Human Gene Id :	80345
Human Swiss Prot No :	Q9H4T2
Immunogen :	The antiserum was produced against synthesized peptide derived from human ZNF435. AA range:191-240
Specificity :	ZSCAN16 Polyclonal Antibody detects endogenous levels of ZSCAN16 protein.
Formulation :	Liquid in PBS containing 50% glycerol, 0.5% BSA and 0.02% sodium azide.
Source :	Polyclonal, Rabbit,IgG
Dilution :	WB 1:500 - 1:2000. IHC 1:100 - 1:300. IF 1:200 - 1:1000. ELISA: 1:20000. Not yet tested in other applications.
Purification :	The antibody was affinity-purified from rabbit antiserum by affinity-chromatography using epitope-specific immunogen.
Concentration :	1 mg/ml
Storage Stability :	-15°C to -25°C/1 year(Do not lower than -25°C)
Observed Band :	41kD
Background :	function:May be involved in transcriptional regulation.,similarity:Belongs to the

krueppel C2H2-type zinc-finger protein family.,similarity:Contains 1 SCAN box domain.,similarity:Contains 4 C2H2-type zinc fingers.,

Function :

function:May be involved in transcriptional regulation.,similarity:Belongs to the krueppel C2H2-type zinc-finger protein family.,similarity:Contains 1 SCAN box domain.,similarity:Contains 4 C2H2-type zinc fingers.,

Subcellular
Location :

Nucleus .

Expression :

Uterus,

Sort :

24792

No4 :

1

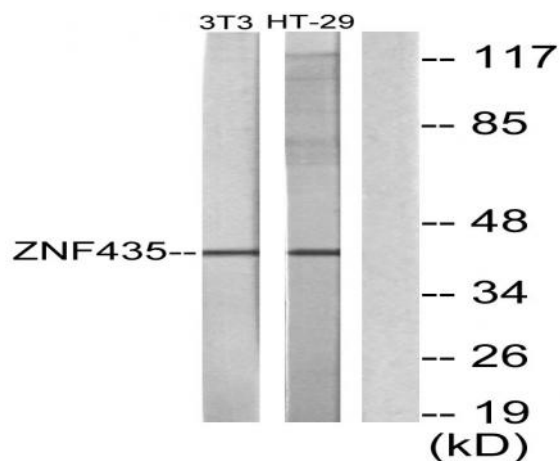
Host :

Rabbit

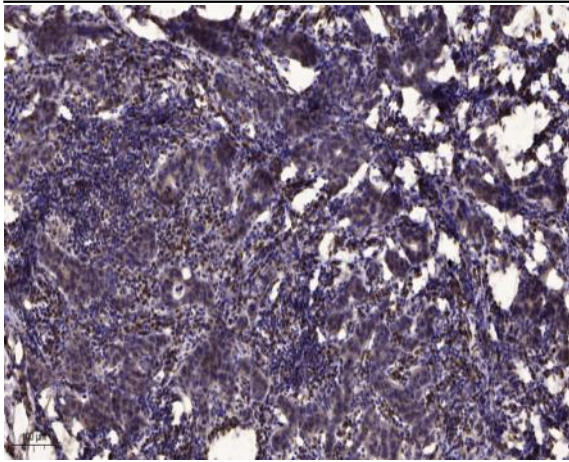
Modifications :

Unmodified

Products Images



Western blot analysis of lysates from NIH/3T3 and HT-29 cells, using ZNF435 Antibody. The lane on the right is blocked with the synthesized peptide.



Immunohistochemical analysis of paraffin-embedded human Breast cancer. 1, Antibody was diluted at 1:200(4° overnight). 2, Tris-EDTA,pH9.0 was used for antigen retrieval. 3,Secondary antibody was diluted at 1:200(room temperature, 45min).