

ZP2 Polyclonal Antibody

Catalog No :	YT4995
Reactivity :	Human;Rat;Mouse;
Applications :	IHC;IF;ELISA
Target :	ZP2
Gene Name :	ZP2
Protein Name :	Zona pellucida sperm-binding protein 2
Human Gene Id :	7783
Human Swiss Prot No :	Q05996
Mouse Swiss Prot No :	P20239
Immunogen :	Synthesized peptide derived from the Internal region of human ZP2.
Specificity :	ZP2 Polyclonal Antibody detects endogenous levels of ZP2 protein.
Formulation :	Liquid in PBS containing 50% glycerol, 0.5% BSA and 0.02% sodium azide.
Source :	Polyclonal, Rabbit,IgG
Dilution :	IHC 1:100 - 1:300. ELISA: 1:40000.. IF 1:50-200
Purification :	The antibody was affinity-purified from rabbit antiserum by affinity-chromatography using epitope-specific immunogen.
Concentration :	1 mg/ml
Storage Stability :	-15°C to -25°C/1 year(Do not lower than -25°C)
Molecularweight :	82kD

Background : The zona pellucida is an extracellular matrix that surrounds the oocyte and early embryo. It is composed of three glycoproteins with various functions during fertilization and preimplantation development. The glycosylated mature peptide is one of the structural components of the zona pellucida and functions in secondary binding and penetration of acrosome-reacted spermatozoa. Female mice lacking this gene do not form a stable zona matrix and are sterile. Alternative splicing results in multiple transcript variants. [provided by RefSeq, Feb 2014],

Function : developmental stage:Expressed during the 2-week growth phase of oogenesis, prior to ovulation.,domain:The ZP domain is involved in the polymerization of the ZP proteins to form the zona pellucida.,function:The mammalian zona pellucida, which mediates species-specific sperm binding, induction of the acrosome reaction and prevents post-fertilization polyspermy, is composed of three to four glycoproteins, ZP1, ZP2, ZP3, and ZP4. ZP2 may act as a secondary sperm receptor.,PTM:O-glycosylated; contains sulfate-substituted glycans.,PTM:Proteolytically cleaved before the transmembrane segment to yield the secreted ectodomain incorporated in the zona pellucida.,PTM:Proteolytically cleaved in the N-terminal part after fertilization, yielding a N-terminal peptide of about 30 kDa which remains covalently attached to the C-terminal peptide via disulfide bond(s). This cleavage may play an important ro

Subcellular Location : [Processed zona pellucida sperm-binding protein 2]: Zona pellucida .; Cell membrane ; Single-pass type I membrane protein .

Expression : Expressed in oocytes(at protein level).

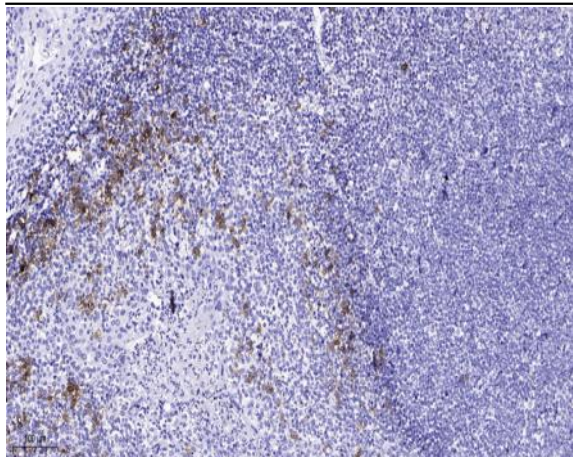
Sort : 24776

No4 : 1

Host : Rabbit

Modifications : Unmodified

Products Images



Immunohistochemical analysis of paraffin-embedded human tonsil. 1, Antibody was diluted at 1:200(4 ° overnight). 2, Tris-EDTA,pH9.0 was used for antigen retrieval. 3,Secondary antibody was diluted at 1:200(room temperature, 45min).