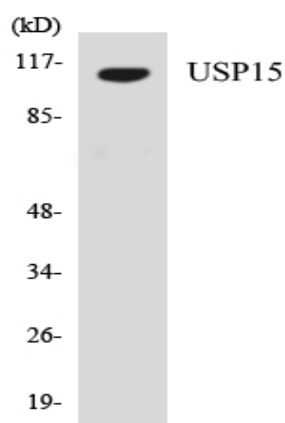


## USP15 Polyclonal Antibody

<b>Catalog No :</b>	YT4830
<b>Reactivity :</b>	Human;Mouse;Rat
<b>Applications :</b>	WB;ELISA
<b>Target :</b>	USP15
<b>Fields :</b>	>>Mitophagy - animal
<b>Gene Name :</b>	USP15
<b>Protein Name :</b>	Ubiquitin carboxyl-terminal hydrolase 15
<b>Human Gene Id :</b>	9958
<b>Human Swiss Prot No :</b>	Q9Y4E8
<b>Mouse Gene Id :</b>	14479
<b>Mouse Swiss Prot No :</b>	Q8R5H1
<b>Rat Swiss Prot No :</b>	Q9R085
<b>Immunogen :</b>	The antiserum was produced against synthesized peptide derived from human USP15. AA range:81-130
<b>Specificity :</b>	USP15 Polyclonal Antibody detects endogenous levels of USP15 protein.
<b>Formulation :</b>	Liquid in PBS containing 50% glycerol, 0.5% BSA and 0.02% sodium azide.
<b>Source :</b>	Polyclonal, Rabbit,IgG
<b>Dilution :</b>	WB 1:500 - 1:2000. ELISA: 1:10000. Not yet tested in other applications.
<b>Purification :</b>	The antibody was affinity-purified from rabbit antiserum by affinity-chromatography using epitope-specific immunogen.

<b>Concentration :</b>	1 mg/ml
<b>Storage Stability :</b>	-15°C to -25°C/1 year(Do not lower than -25°C)
<b>Observed Band :</b>	115kD
<b>Background :</b>	This gene encodes a member of the ubiquitin specific protease (USP) family of deubiquitinating enzymes. USP enzymes play critical roles in ubiquitin-dependent processes through polyubiquitin chain disassembly and hydrolysis of ubiquitin-substrate bonds. The encoded protein associates with the COP9 signalosome, and also plays a role in transforming growth factor beta signalling through deubiquitination of receptor-activated SMAD transcription factors. Alternatively spliced transcript variants encoding multiple isoforms have been observed for this gene, and a pseudogene of this gene is located on the long arm of chromosome 2. [provided by RefSeq, Nov 2011],
<b>Function :</b>	catalytic activity:Ubiquitin C-terminal thioester + H(2)O = ubiquitin + a thiol.,similarity:Belongs to the peptidase C19 family.,similarity:Contains 1 DUSP domain.,tissue specificity:Expressed in skeletal muscle, kidney, heart, placenta, liver, thymus, lung, and ovary, with little or no expression in other tissues.,
<b>Subcellular Location :</b>	Cytoplasm . Nucleus . Mitochondrion .
<b>Expression :</b>	Expressed in skeletal muscle, kidney, heart, placenta, liver, thymus, lung, and ovary, with little or no expression in other tissues.
<b>Sort :</b>	24002
<b>No4 :</b>	1

## Products Images



Western blot analysis of the lysates from HeLa cells using USP15 antibody.