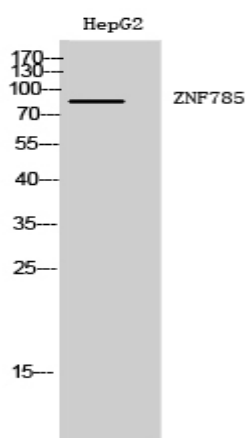


ZNF785 Polyclonal Antibody

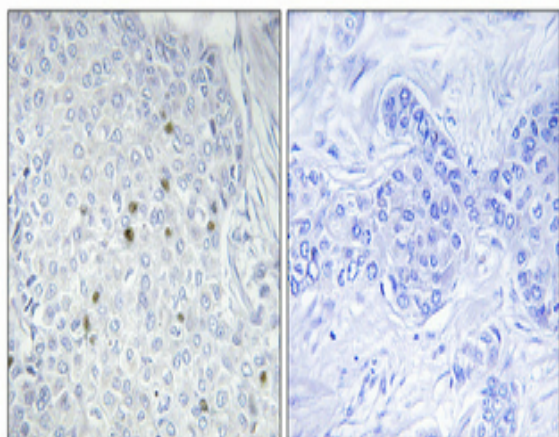
Catalog No :	YT4984
Reactivity :	Human;Rat;Mouse;
Applications :	WB;IHC;IF;ELISA
Target :	ZNF785
Fields :	>>Herpes simplex virus 1 infection
Gene Name :	ZNF785
Protein Name :	Zinc finger protein 785
Human Gene Id :	146540
Human Swiss Prot No :	A8K8V0
Immunogen :	The antiserum was produced against synthesized peptide derived from human ZNF785. AA range:91-140
Specificity :	ZNF785 Polyclonal Antibody detects endogenous levels of ZNF785 protein.
Formulation :	Liquid in PBS containing 50% glycerol, 0.5% BSA and 0.02% sodium azide.
Source :	Polyclonal, Rabbit,IgG
Dilution :	WB 1:500 - 1:2000. IHC 1:100 - 1:300. ELISA: 1:40000.. IF 1:50-200
Purification :	The antibody was affinity-purified from rabbit antiserum by affinity-chromatography using epitope-specific immunogen.
Concentration :	1 mg/ml
Storage Stability :	-15°C to -25°C/1 year(Do not lower than -25°C)
Observed Band :	87kD

Background :	function:May be involved in transcriptional regulation.,sequence caution:The predicted gene has been split into 2 genes: ZNF688 and ZNF785.,similarity:Belongs to the krueppel C2H2-type zinc-finger protein family.,similarity:Contains 1 KRAB domain.,similarity:Contains 2 C2H2-type zinc fingers.,similarity:Contains 7 C2H2-type zinc fingers.,
Function :	function:May be involved in transcriptional regulation.,sequence caution:The predicted gene has been split into 2 genes: ZNF688 and ZNF785.,similarity:Belongs to the krueppel C2H2-type zinc-finger protein family.,similarity:Contains 1 KRAB domain.,similarity:Contains 2 C2H2-type zinc fingers.,similarity:Contains 7 C2H2-type zinc fingers.,
Subcellular Location :	Nucleus .
Expression :	B-cell,Brain,Peripheral blood monocyte,Testis,
Sort :	24756
No4 :	1
Host :	Rabbit
Modifications :	Unmodified

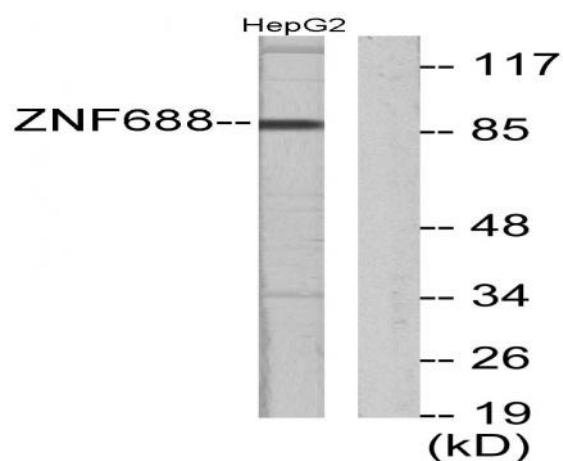
Products Images



Western Blot analysis of HepG2 cells using ZNF785 Polyclonal Antibody. Secondary antibody(catalog#:RS0002) was diluted at 1:20000 cells nucleus extracted by Minute TM Cytoplasmic and Nuclear Fractionation kit (SC-003, Invent biotech, MN, USA).



Immunohistochemical analysis of paraffin-embedded Human breast cancer. Antibody was diluted at 1:100 (4° overnight). High-pressure and temperature Tris-EDTA, pH 8.0 was used for antigen retrieval. Negative control (right) obtained from antibody was pre-absorbed by immunogen peptide.



Western blot analysis of lysates from HepG2 cells, using ZNF785 Antibody. The lane on the right is blocked with the synthesized peptide.