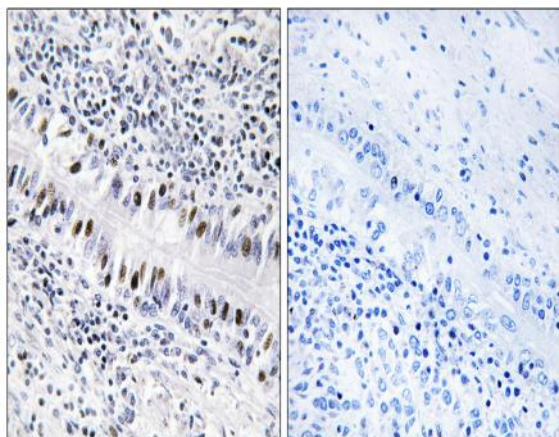


## ZNF76 Polyclonal Antibody

|                              |   |
|------------------------------|---|
| <b>Catalog No :</b>          | YT4982  |
| <b>Reactivity :</b>          | Human;Rat;Mouse;  |
| <b>Applications :</b>        | IHC;IF;ELISA  |
| <b>Target :</b>              | ZNF76   |
| <b>Gene Name :</b>           | ZNF76   |
| <b>Protein Name :</b>        | Zinc finger protein 76  |
| <b>Human Gene Id :</b>       | 7629  |
| <b>Human Swiss Prot No :</b> | P36508  |
| <b>Mouse Swiss Prot No :</b> | Q8BMU0  |
| <b>Immunogen :</b>           | The antiserum was produced against synthesized peptide derived from human ZNF76. AA range:116-165                     |
| <b>Specificity :</b>         | ZNF76 Polyclonal Antibody detects endogenous levels of ZNF76 protein.   |
| <b>Formulation :</b>         | Liquid in PBS containing 50% glycerol, 0.5% BSA and 0.02% sodium azide.   |
| <b>Source :</b>              | Polyclonal, Rabbit,IgG  |
| <b>Dilution :</b>            | IHC 1:100 - 1:300. ELISA: 1:10000.. IF 1:50-200   |
| <b>Purification :</b>        | The antibody was affinity-purified from rabbit antiserum by affinity-chromatography using epitope-specific immunogen. |
| <b>Concentration :</b>       | 1 mg/ml   |
| <b>Storage Stability :</b>   | -15°C to -25°C/1 year(Do not lower than -25°C)  |
| <b>Molecularweight :</b>     | 62kD  |

|                               |  |
|-------------------------------|--|
| <b>Background :</b>           | function:May be involved in transcriptional regulation.,similarity:Belongs to the krueppel C2H2-type zinc-finger protein family.,similarity:Contains 7 C2H2-type zinc fingers.,tissue specificity:Testis., |
| <b>Function :</b>             | function:May be involved in transcriptional regulation.,similarity:Belongs to the krueppel C2H2-type zinc-finger protein family.,similarity:Contains 7 C2H2-type zinc fingers.,tissue specificity:Testis., |
| <b>Subcellular Location :</b> | Nucleus .  |
| <b>Expression :</b>           | Testis.  |
| <b>Tag :</b>                  | orthogonal   |
| <b>Sort :</b>                 | 24754  |
| <b>Host :</b>                 | Rabbit   |
| <b>Modifications :</b>        | Unmodified   |

## Products Images



Immunohistochemistry analysis of paraffin-embedded human lung carcinoma, using ZNF76 Antibody. The picture on the right is blocked with the synthesized peptide.