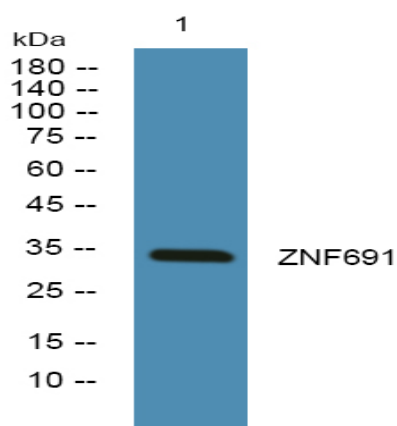


ZNF691 Polyclonal Antibody

Catalog No :	YT4979
Reactivity :	Human;Rat;Mouse;
Applications :	WB;ELISA
Target :	ZNF691
Gene Name :	ZNF691
Protein Name :	Zinc finger protein 691
Human Gene Id :	51058
Human Swiss Prot No :	Q5VV52
Mouse Swiss Prot No :	Q3TDE8
Immunogen :	Synthesized peptide derived from the Internal region of human ZNF691.
Specificity :	ZNF691 Polyclonal Antibody detects endogenous levels of ZNF691 protein.
Formulation :	Liquid in PBS containing 50% glycerol, 0.5% BSA and 0.02% sodium azide.
Source :	Polyclonal, Rabbit,IgG
Dilution :	WB 1:500 - 1:2000. ELISA: 1:40000. Not yet tested in other applications.
Purification :	The antibody was affinity-purified from rabbit antiserum by affinity-chromatography using epitope-specific immunogen.
Concentration :	1 mg/ml
Storage Stability :	-15°C to -25°C/1 year(Do not lower than -25°C)
Observed Band :	33kD

Background :	function:May be involved in transcriptional regulation.,similarity:Belongs to the krueppel C2H2-type zinc-finger protein family.,similarity:Contains 7 C2H2-type zinc fingers.,
Function :	function:May be involved in transcriptional regulation.,similarity:Belongs to the krueppel C2H2-type zinc-finger protein family.,similarity:Contains 7 C2H2-type zinc fingers.,
Subcellular Location :	Nucleus .
Expression :	Brain,Cervix,Embryo,
Sort :	24748
No4 :	1
Host :	Rabbit
Modifications :	Unmodified

Products Images



Western blot analysis of lysates from A431 cells, primary antibody was diluted at 1:1000, 4° over night