

## ZNF262 Polyclonal Antibody

<b>Catalog No :</b>	YT4959
<b>Reactivity :</b>	Human;Mouse
<b>Applications :</b>	WB;IHC;IF;ELISA
<b>Target :</b>	ZNF262
<b>Gene Name :</b>	ZMYM4
<b>Protein Name :</b>	Zinc finger MYM-type protein 4
<b>Human Gene Id :</b>	9202
<b>Human Swiss Prot No :</b>	Q5VZL5
<b>Mouse Gene Id :</b>	67785
<b>Mouse Swiss Prot No :</b>	A2A791
<b>Immunogen :</b>	The antiserum was produced against synthesized peptide derived from human ZMYM4. AA range:801-850
<b>Specificity :</b>	ZNF262 Polyclonal Antibody detects endogenous levels of ZNF262 protein.
<b>Formulation :</b>	Liquid in PBS containing 50% glycerol, 0.5% BSA and 0.02% sodium azide.
<b>Source :</b>	Polyclonal, Rabbit,IgG
<b>Dilution :</b>	WB 1:500 - 1:2000. IHC 1:100 - 1:300. ELISA: 1:10000.. IF 1:50-200
<b>Purification :</b>	The antibody was affinity-purified from rabbit antiserum by affinity-chromatography using epitope-specific immunogen.
<b>Concentration :</b>	1 mg/ml
<b>Storage Stability :</b>	-15°C to -25°C/1 year(Do not lower than -25°C)

**Observed Band :** 175kD

**Background :** miscellaneous:The 3'-UTR region of the mRNA encoding this protein contains a motif called CDIR (for cell death inhibiting RNA) that binds HNRPD/AUF1 and HSPB1/HSP27. It is able to inhibit interferon-gamma induced apoptosis.,PTM:Phosphorylated upon DNA damage, probably by ATM or ATR.,similarity:Contains 9 MYM-type zinc fingers.,tissue specificity:Expressed at higher level in heart, skeletal muscle, kidney and liver.,

**Function :** miscellaneous:The 3'-UTR region of the mRNA encoding this protein contains a motif called CDIR (for cell death inhibiting RNA) that binds HNRPD/AUF1 and HSPB1/HSP27. It is able to inhibit interferon-gamma induced apoptosis.,PTM:Phosphorylated upon DNA damage, probably by ATM or ATR.,similarity:Contains 9 MYM-type zinc fingers.,tissue specificity:Expressed at higher level in heart, skeletal muscle, kidney and liver.,

**Subcellular Location :** nucleoplasm,cytoplasm,

**Expression :** Expressed at higher level in heart, skeletal muscle, kidney and liver.

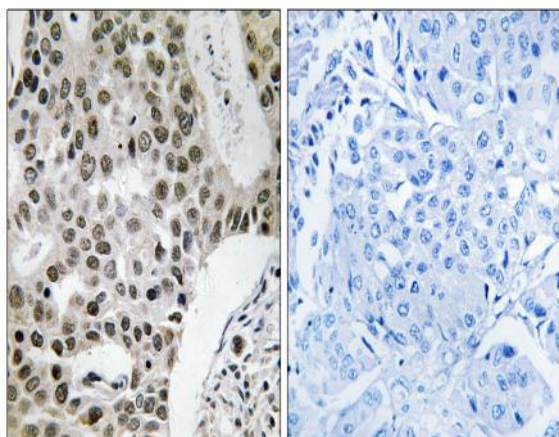
**Sort :** 24718

**No4 :** 1

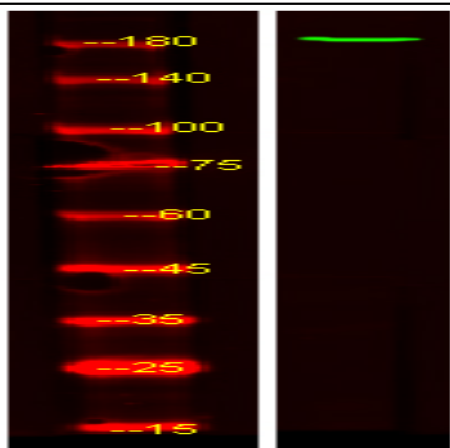
**Host :** Rabbit

**Modifications :** Unmodified

## Products Images



Immunohistochemistry analysis of paraffin-embedded human breast carcinoma tissue, using ZMYM4 Antibody. The picture on the right is blocked with the synthesized peptide.



Western Blot analysis of HEK293 lysis, using primary antibody at 1:1000 dilution. Secondary antibody(catalog#:RS23920) was diluted at 1:10000