

ZNF232 Polyclonal Antibody

Catalog No :	YT4958
Reactivity :	Human;Rat;Mouse;
Applications :	IHC;IF;ELISA
Target :	ZNF232
Gene Name :	ZNF232
Protein Name :	Zinc finger protein 232
Human Gene Id :	7775
Human Swiss Prot No :	Q9UNY5
Immunogen :	The antiserum was produced against synthesized peptide derived from human ZNF232. AA range:171-220
Specificity :	ZNF232 Polyclonal Antibody detects endogenous levels of ZNF232 protein.
Formulation :	Liquid in PBS containing 50% glycerol, 0.5% BSA and 0.02% sodium azide.
Source :	Polyclonal, Rabbit,IgG
Dilution :	IHC 1:100 - 1:300. ELISA: 1:5000.. IF 1:50-200
Purification :	The antibody was affinity-purified from rabbit antiserum by affinity-chromatography using epitope-specific immunogen.
Concentration :	1 mg/ml
Storage Stability :	-15°C to -25°C/1 year(Do not lower than -25°C)
Molecularweight :	48kD
Background :	function:May be involved in transcriptional regulation.,similarity:Belongs to the krueppel C2H2-type zinc-finger protein family.,similarity:Contains 1 SCAN box

domain.,similarity:Contains 5 C2H2-type zinc fingers.,tissue specificity:Ubiquitous. Higher expression seen in the liver, testis and ovary.,

Function :

function:May be involved in transcriptional regulation.,similarity:Belongs to the krueppel C2H2-type zinc-finger protein family.,similarity:Contains 1 SCAN box domain.,similarity:Contains 5 C2H2-type zinc fingers.,tissue specificity:Ubiquitous. Higher expression seen in the liver, testis and ovary.,

Subcellular Location :

Nucleus.

Expression :

Ubiquitous. Higher expression seen in the liver, testis and ovary.

Sort :

24716

No4 :

1

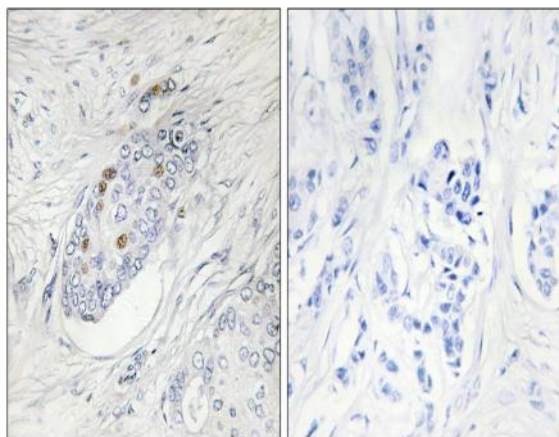
Host :

Rabbit

Modifications :

Unmodified

Products Images



Immunohistochemistry analysis of paraffin-embedded human breast carcinoma, using ZNF232 Antibody. The picture on the right is blocked with the synthesized peptide.