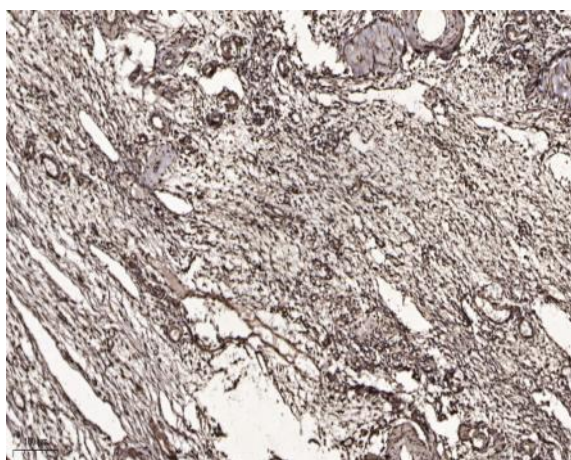


Txk Polyclonal Antibody

Catalog No :	YT4790
Reactivity :	Human;Rat;Mouse;
Applications :	IHC;IF;ELISA
Target :	Txk
Fields :	>>Leukocyte transendothelial migration
Gene Name :	TXK
Protein Name :	Tyrosine-protein kinase TXK
Human Gene Id :	7294
Human Swiss Prot No :	P42681
Mouse Swiss Prot No :	P42682
Immunogen :	Synthesized peptide derived from the Internal region of human Txk.
Specificity :	Txk Polyclonal Antibody detects endogenous levels of Txk protein.
Formulation :	Liquid in PBS containing 50% glycerol, 0.5% BSA and 0.02% sodium azide.
Source :	Polyclonal, Rabbit,IgG
Dilution :	IHC 1:100 - 1:300. ELISA: 1:40000.. IF 1:50-200
Purification :	The antibody was affinity-purified from rabbit antiserum by affinity-chromatography using epitope-specific immunogen.
Concentration :	1 mg/ml
Storage Stability :	-15°C to -25°C/1 year(Do not lower than -25°C)

Molecularweight :	61kD
Cell Pathway :	Leukocyte transendothelial migration;
Background :	catalytic activity:ATP + a [protein]-L-tyrosine = ADP + a [protein]-L-tyrosine phosphate.,similarity:Belongs to the protein kinase superfamily. Tyr protein kinase family. TEC subfamily.,similarity:Contains 1 protein kinase domain.,similarity:Contains 1 SH2 domain.,similarity:Contains 1 SH3 domain.,tissue specificity:Expressed in T-cells and some myeloid cell lines.,
Function :	catalytic activity:ATP + a [protein]-L-tyrosine = ADP + a [protein]-L-tyrosine phosphate.,similarity:Belongs to the protein kinase superfamily. Tyr protein kinase family. TEC subfamily.,similarity:Contains 1 protein kinase domain.,similarity:Contains 1 SH2 domain.,similarity:Contains 1 SH3 domain.,tissue specificity:Expressed in T-cells and some myeloid cell lines.,
Subcellular Location :	Cytoplasm . Nucleus . Cell membrane ; Peripheral membrane protein . Localizes in the vicinity of cell surface receptors in the plasma membrane after receptor stimulation. Translocates into the nucleus and enhances IFN-gamma gene transcription in T-cells.
Expression :	Expressed in T-cells and some myeloid cell lines. Expressed in Th1/Th0 cells with IFN-gamma-producing potential.
Sort :	23777
No4 :	1

Products Images



Immunohistochemical analysis of paraffin-embedded human oophoroma. 1, Antibody was diluted at 1:200(4° overnight). 2, Tris-EDTA,pH9.0 was used for antigen retrieval. 3,Secondary antibody was diluted at 1:200(room temperature, 45min).