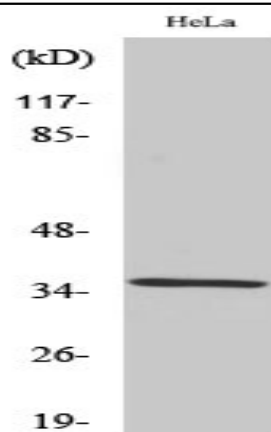


ZIS Polyclonal Antibody

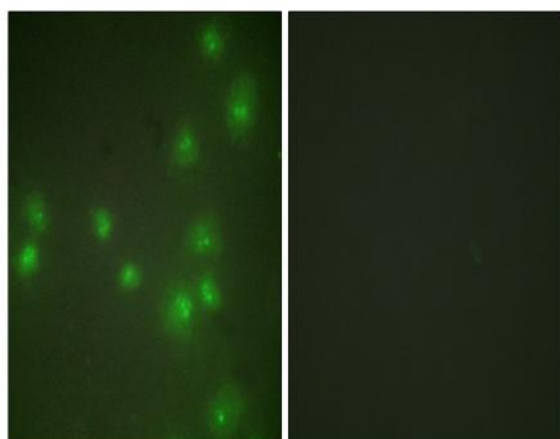
Catalog No :	YT4952
Reactivity :	Human;Mouse;Rat
Applications :	WB;IHC;IF;ELISA
Target :	ZIS
Gene Name :	ZRANB2
Protein Name :	Zinc finger Ran-binding domain-containing protein 2
Human Gene Id :	9406
Human Swiss Prot No :	O95218
Mouse Gene Id :	53861
Mouse Swiss Prot No :	Q9R020
Rat Gene Id :	58821
Rat Swiss Prot No :	O35986
Immunogen :	The antiserum was produced against synthesized peptide derived from human ZNF265. AA range:106-155
Specificity :	ZIS Polyclonal Antibody detects endogenous levels of ZIS protein.
Formulation :	Liquid in PBS containing 50% glycerol, 0.5% BSA and 0.02% sodium azide.
Source :	Polyclonal, Rabbit,IgG
Dilution :	WB 1:500 - 1:2000. IHC 1:100 - 1:300. IF 1:200 - 1:1000. ELISA: 1:10000. Not yet tested in other applications.
Purification :	The antibody was affinity-purified from rabbit antiserum by affinity-chromatography using epitope-specific immunogen.

Concentration :	1 mg/ml
Storage Stability :	-15°C to -25°C/1 year(Do not lower than -25°C)
Observed Band :	34kD
Background :	domain:The RanBP2-type zinc fingers mediate binding to RNA.,function:Splice factor required for alternative splicing of TRA2B/SFRS10 transcripts. May interfere with constitutive 5'-splice site selection.,PTM:Isoform 2 is phosphorylated on Ser-310 upon DNA damage, probably by ATM or ATR.,sequence caution:Intron retention.,similarity:Belongs to the ZRANB2 family.,similarity:Contains 2 RanBP2-type zinc fingers.,subunit:Interacts with the C-terminal half of SNRNP70, the Arg/Ser-rich domain of XE7 as well as with U2AF1 and CLK1.,
Function :	domain:The RanBP2-type zinc fingers mediate binding to RNA.,function:Splice factor required for alternative splicing of TRA2B/SFRS10 transcripts. May interfere with constitutive 5'-splice site selection.,PTM:Isoform 2 is phosphorylated on Ser-310 upon DNA damage, probably by ATM or ATR.,sequence caution:Intron retention.,similarity:Belongs to the ZRANB2 family.,similarity:Contains 2 RanBP2-type zinc fingers.,subunit:Interacts with the C-terminal half of SNRNP70, the Arg/Ser-rich domain of XE7 as well as with U2AF1 and CLK1.,
Subcellular Location :	Nucleus .
Expression :	Brain,Epithelium,Fetal brain,Fetal kidney,Liver,Skin,Testis,Uterus,
Sort :	24546
No4 :	1
Host :	Rabbit
Modifications :	Unmodified

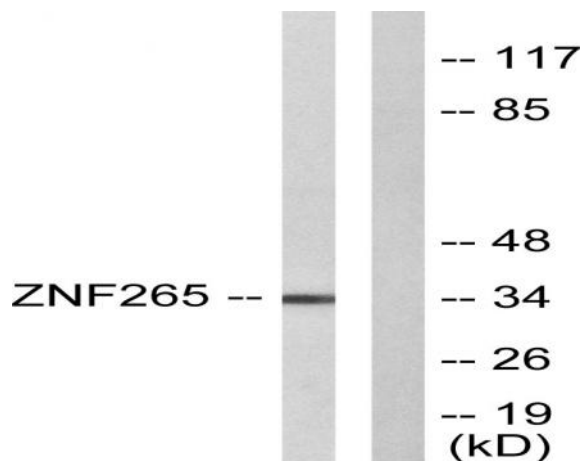
Products Images



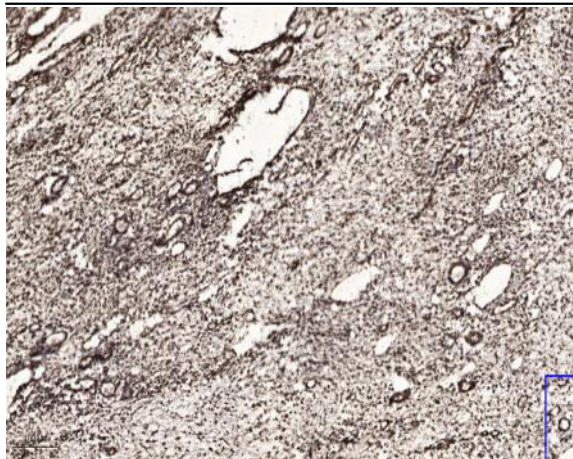
Western Blot analysis of various cells using ZIS Polyclonal Antibody. Secondary antibody(catalog#:RS0002) was diluted at 1:20000 cells nucleus extracted by Minute TM Cytoplasmic and Nuclear Fractionation kit (SC-003, Inventbiotech, MN, USA).



Immunofluorescence analysis of HUVEC cells, using ZNF265 Antibody. The picture on the right is blocked with the synthesized peptide.



Western blot analysis of lysates from HeLa cells, using ZNF265 Antibody. The lane on the right is blocked with the synthesized peptide.



Immunohistochemical analysis of paraffin-embedded human oophoroma. 1, Antibody was diluted at 1:200(4° overnight). 2, Tris-EDTA,pH9.0 was used for antigen retrieval. 3,Secondary antibody was diluted at 1:200(room temperature, 45min).