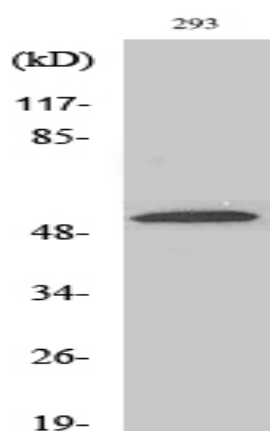


## ZIP7 Polyclonal Antibody

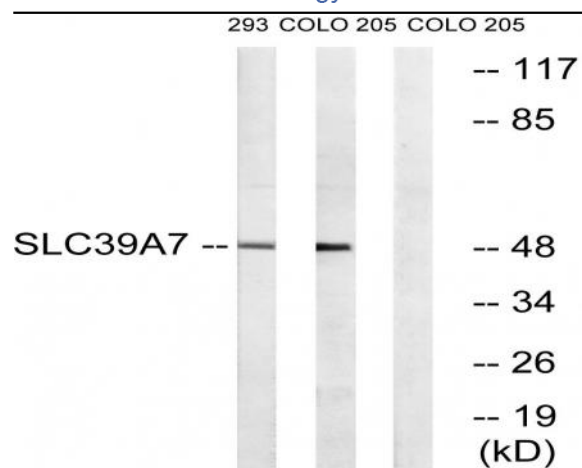
<b>Catalog No :</b>	YT4950
<b>Reactivity :</b>	Human;Mouse;Rat
<b>Applications :</b>	WB;ELISA
<b>Target :</b>	ZIP7
<b>Fields :</b>	>>Alzheimer disease;>>Parkinson disease
<b>Gene Name :</b>	SLC39A7
<b>Protein Name :</b>	Zinc transporter SLC39A7
<b>Human Gene Id :</b>	7922
<b>Human Swiss Prot No :</b>	Q92504
<b>Mouse Gene Id :</b>	14977
<b>Mouse Swiss Prot No :</b>	Q31125
<b>Immunogen :</b>	The antiserum was produced against synthesized peptide derived from human SLC39A7. AA range:131-180
<b>Specificity :</b>	ZIP7 Polyclonal Antibody detects endogenous levels of ZIP7 protein.
<b>Formulation :</b>	Liquid in PBS containing 50% glycerol, 0.5% BSA and 0.02% sodium azide.
<b>Source :</b>	Polyclonal, Rabbit,IgG
<b>Dilution :</b>	WB 1:500 - 1:2000. ELISA: 1:5000. Not yet tested in other applications.
<b>Purification :</b>	The antibody was affinity-purified from rabbit antiserum by affinity-chromatography using epitope-specific immunogen.
<b>Concentration :</b>	1 mg/ml

<b>Storage Stability :</b>	-15°C to -25°C/1 year(Do not lower than -25°C)
<b>Observed Band :</b>	50kD
<b>Background :</b>	The protein encoded by this gene transports zinc from the Golgi and endoplasmic reticulum to the cytoplasm. This transport may be important for activation of tyrosine kinases, some of which could be involved in cancer progression. Therefore, modulation of the encoded protein could be useful as a therapeutic agent against cancer. Alternative splicing results in multiple transcript variants. [provided by RefSeq, Jan 2014],
<b>Function :</b>	similarity:Belongs to the ZIP transporter (TC 2.A.5) family. KE4/Catsup subfamily.,tissue specificity:Major expression in placenta, lung, kidney and pancreas.,
<b>Subcellular Location :</b>	Endoplasmic reticulum membrane ; Multi-pass membrane protein . Golgi apparatus, cis-Golgi network membrane ; Multi-pass membrane protein .
<b>Expression :</b>	Widely expressed.
<b>Sort :</b>	24544
<b>No4 :</b>	1
<b>Host :</b>	Rabbit
<b>Modifications :</b>	Unmodified

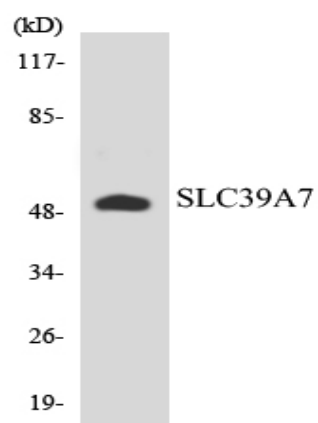
## Products Images



Western Blot analysis of various cells using ZIP7 Polyclonal Antibody. Secondary antibody(catalog#:RS0002) was diluted at 1:20000



Western blot analysis of lysates from 293 and COLO cells, using SLC39A7 Antibody. The lane on the right is blocked with the synthesized peptide.



Western blot analysis of the lysates from HUVEC cells using SLC39A7 antibody.