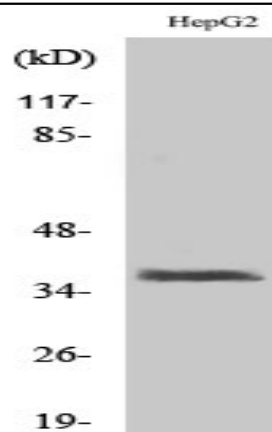


## XRCC3 Polyclonal Antibody

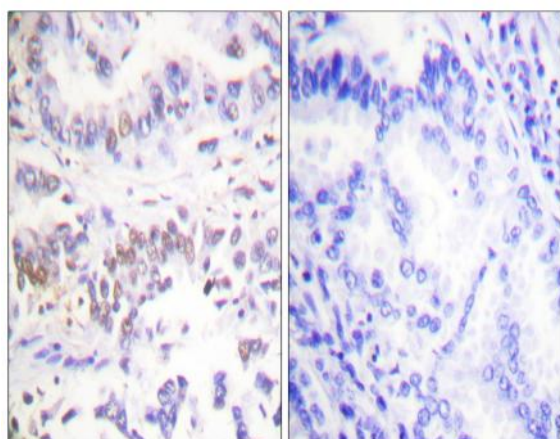
<b>Catalog No :</b>	YT4919
<b>Reactivity :</b>	Human;Rat;Mouse;
<b>Applications :</b>	WB;IHC;IF;ELISA
<b>Target :</b>	XRCC3
<b>Fields :</b>	>>Homologous recombination
<b>Gene Name :</b>	XRCC3
<b>Protein Name :</b>	DNA repair protein XRCC3
<b>Human Gene Id :</b>	7517
<b>Human Swiss Prot No :</b>	O43542
<b>Mouse Swiss Prot No :</b>	Q9CXE6
<b>Immunogen :</b>	The antiserum was produced against synthesized peptide derived from human XRCC3. AA range:41-90
<b>Specificity :</b>	XRCC3 Polyclonal Antibody detects endogenous levels of XRCC3 protein.
<b>Formulation :</b>	Liquid in PBS containing 50% glycerol, 0.5% BSA and 0.02% sodium azide.
<b>Source :</b>	Polyclonal, Rabbit,IgG
<b>Dilution :</b>	WB 1:500 - 1:2000. IHC 1:100 - 1:300. ELISA: 1:10000.. IF 1:50-200
<b>Purification :</b>	The antibody was affinity-purified from rabbit antiserum by affinity-chromatography using epitope-specific immunogen.
<b>Concentration :</b>	1 mg/ml
<b>Storage Stability :</b>	-15°C to -25°C/1 year(Do not lower than -25°C)

<b>Observed Band :</b>	38kD
<b>Cell Pathway :</b>	Homologous recombination;
<b>Background :</b>	<p>This gene encodes a member of the RecA/Rad51-related protein family that participates in homologous recombination to maintain chromosome stability and repair DNA damage. This gene functionally complements Chinese hamster irs1SF, a repair-deficient mutant that exhibits hypersensitivity to a number of different DNA-damaging agents and is chromosomally unstable. A rare microsatellite polymorphism in this gene is associated with cancer in patients of varying radiosensitivity. Alternatively spliced transcript variants encoding the same protein have been identified. [provided by RefSeq, Jul 2008],</p>
<b>Function :</b>	<p>disease:Met-241 is associated with the development of cutaneous malignant melanoma.,function:Involved in the homologous recombination repair (HRR) pathway of double-stranded DNA, thought to repair chromosomal fragmentation, translocations and deletions.,PTM:Phosphorylated upon DNA damage, probably by ATM or ATR.,similarity:Belongs to the recA family. RAD51 subfamily.,subunit:Interacts with RAD51C and RAD51. Part of a complex consisting of RAD51B, RAD51C, RAD51D, XRCC2 and XRCC3.,</p>
<b>Subcellular Location :</b>	<p>Nucleus. Cytoplasm. Cytoplasm, perinuclear region. Mitochondrion. Accumulates in discrete nuclear foci prior to DNA damage, and these foci persist throughout the time course of DNA repair.</p>
<b>Expression :</b>	Cerebellum,Cervix carcinoma,Lymph,Muscle,Neuroblastoma,Placenta,
<b>Tag :</b>	orthogonal
<b>Sort :</b>	24364
<b>Host :</b>	Rabbit
<b>Modifications :</b>	Unmodified

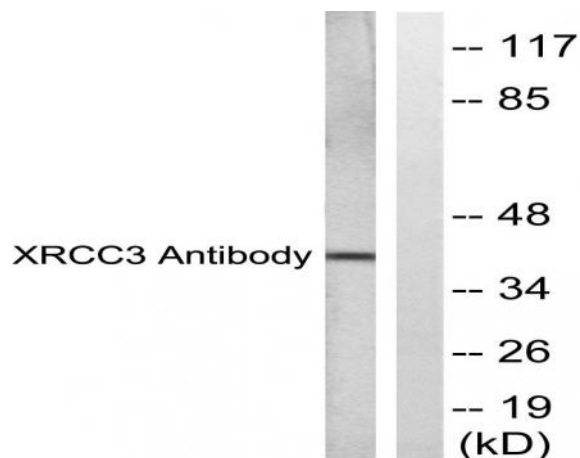
## Products Images



Western Blot analysis of various cells using XRCC3 Polyclonal Antibody. Secondary antibody(catalog#:RS0002) was diluted at 1:20000 cells nucleus extracted by Minute TM Cytoplasmic and Nuclear Fractionation kit (SC-003, Inventbiotech, MN, USA).



Immunohistochemistry analysis of paraffin-embedded human lung carcinoma tissue, using XRCC3 Antibody. The picture on the right is blocked with the synthesized peptide.



Western blot analysis of lysates from HepG2 cells, treated with Adriamycin 0.5uM 5h, using XRCC3 Antibody. The lane on the right is blocked with the synthesized peptide.