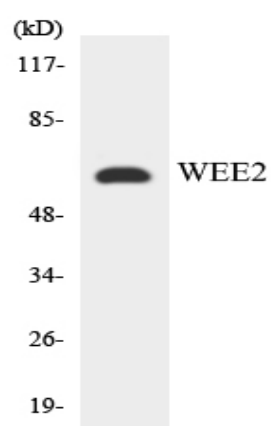
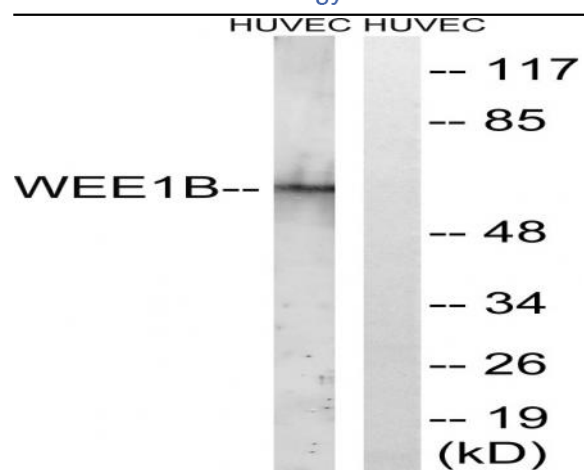


Wee 2 Polyclonal Antibody

Catalog No :	YT4904
Reactivity :	Human;Rat;Mouse;
Applications :	WB;ELISA
Target :	Wee 2
Fields :	>>Cell cycle;>>Human immunodeficiency virus 1 infection
Gene Name :	WEE2
Protein Name :	Wee1-like protein kinase 2
Human Gene Id :	494551
Human Swiss Prot No :	P0C1S8
Mouse Swiss Prot No :	Q66JT0
Immunogen :	The antiserum was produced against synthesized peptide derived from human WEE2. AA range:151-200
Specificity :	Wee 2 Polyclonal Antibody detects endogenous levels of Wee 2 protein.
Formulation :	Liquid in PBS containing 50% glycerol, 0.5% BSA and 0.02% sodium azide.
Source :	Polyclonal, Rabbit,IgG
Dilution :	WB 1:500 - 1:2000. ELISA: 1:5000. Not yet tested in other applications.
Purification :	The antibody was affinity-purified from rabbit antiserum by affinity-chromatography using epitope-specific immunogen.
Concentration :	1 mg/ml
Storage Stability :	-15°C to -25°C/1 year(Do not lower than -25°C)

Observed Band :	60kD
Cell Pathway :	Cell_Cycle_G1S;Cell_Cycle_G2M_DNA;
Background :	<p>catalytic activity:ATP + a [protein]-L-tyrosine = ADP + a [protein]-L-tyrosine phosphate.,function:Phosphorylates and inhibits CDC2. May act as a negative regulator of entry into mitosis (G2 to M transition).,PTM:Phosphorylated .,similarity:Belongs to the protein kinase superfamily. Ser/Thr protein kinase family. WEE1 subfamily.,similarity:Contains 1 protein kinase domain.,tissue specificity:Expressed in testis.,</p>
Function :	<p>catalytic activity:ATP + a [protein]-L-tyrosine = ADP + a [protein]-L-tyrosine phosphate.,function:Phosphorylates and inhibits CDC2. May act as a negative regulator of entry into mitosis (G2 to M transition).,PTM:Phosphorylated .,similarity:Belongs to the protein kinase superfamily. Ser/Thr protein kinase family. WEE1 subfamily.,similarity:Contains 1 protein kinase domain.,tissue specificity:Expressed in testis.,</p>
Subcellular Location :	Nucleus .
Expression :	Expressed in oocytes (at protein level) (PubMed:29606300). May also be expressed in testis (PubMed:11029659).
Sort :	24278
No4 :	1
Host :	Rabbit
Modifications :	Unmodified

Products Images



Western blot analysis of the lysates from K562 cells using WEE2 antibody.