

## WAVE4 Polyclonal Antibody

<b>Catalog No :</b>	YT4900
<b>Reactivity :</b>	Human;Rat;Mouse;
<b>Applications :</b>	IHC;IF;ELISA
<b>Target :</b>	WAVE4
<b>Gene Name :</b>	WASF4
<b>Protein Name :</b>	Putative Wiskott-Aldrich syndrome protein family member 4
<b>Human Gene Id :</b>	644739
<b>Human Swiss Prot No :</b>	Q8IV90
<b>Immunogen :</b>	The antiserum was produced against synthesized peptide derived from human WASF4. AA range:190-239
<b>Specificity :</b>	WAVE4 Polyclonal Antibody detects endogenous levels of WAVE4 protein.
<b>Formulation :</b>	Liquid in PBS containing 50% glycerol, 0.5% BSA and 0.02% sodium azide.
<b>Source :</b>	Polyclonal, Rabbit,IgG
<b>Dilution :</b>	IHC 1:100 - 1:300. ELISA: 1:10000.. IF 1:50-200
<b>Purification :</b>	The antibody was affinity-purified from rabbit antiserum by affinity-chromatography using epitope-specific immunogen.
<b>Concentration :</b>	1 mg/ml
<b>Storage Stability :</b>	-15°C to -25°C/1 year(Do not lower than -25°C)
<b>Observed Band :</b>	68kD
<b>Background :</b>	WASF4P (WAS protein family member 4, pseudogene) is a pseudogene belonging to the family of genes encoding Wiskott-Aldrich syndrome (WAS)

proteins, which are involved in the transmission of signals to the actin cytoskeleton. Wiskott-Aldrich syndrome is a disease of the immune system. This pseudogene, which is apparently not transcribed, most closely resembles WASF4P encoding the WAS protein family member 2, which is located on chromosome 1.

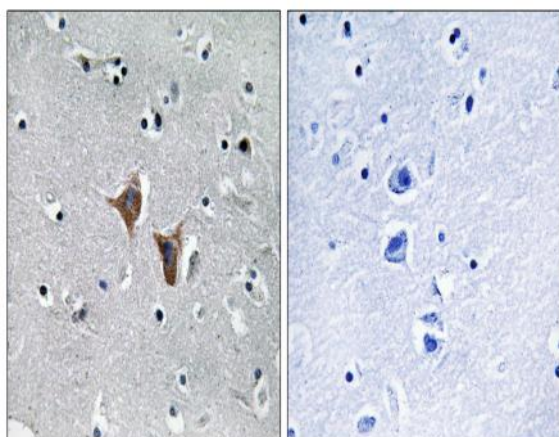
**Sort :** 24246

**No4 :** 1

**Host :** Rabbit

**Modifications :** Unmodified

## Products Images



Immunohistochemistry analysis of paraffin-embedded human brain, using WASF4 Antibody. The picture on the right is blocked with the synthesized peptide.