

## VHX Polyclonal Antibody

<b>Catalog No :</b>	YT4877
<b>Reactivity :</b>	Human;Mouse
<b>Applications :</b>	WB;IHC;IF;ELISA
<b>Target :</b>	VHX
<b>Gene Name :</b>	DUSP22
<b>Protein Name :</b>	Dual specificity protein phosphatase 22
<b>Human Gene Id :</b>	56940
<b>Human Swiss Prot No :</b>	Q9NRW4
<b>Mouse Gene Id :</b>	105352
<b>Mouse Swiss Prot No :</b>	Q99N11
<b>Immunogen :</b>	The antiserum was produced against synthesized peptide derived from human DUSP22. AA range:121-170
<b>Specificity :</b>	VHX Polyclonal Antibody detects endogenous levels of VHX protein.
<b>Formulation :</b>	Liquid in PBS containing 50% glycerol, 0.5% BSA and 0.02% sodium azide.
<b>Source :</b>	Polyclonal, Rabbit,IgG
<b>Dilution :</b>	WB 1:500 - 1:2000. ELISA: 1:10000.. IF 1:50-200
<b>Purification :</b>	The antibody was affinity-purified from rabbit antiserum by affinity-chromatography using epitope-specific immunogen.
<b>Concentration :</b>	1 mg/ml
<b>Storage Stability :</b>	-15°C to -25°C/1 year(Do not lower than -25°C)

**Observed Band :** 21kD

**Background :**

catalytic activity:A phosphoprotein + H(2)O = a protein + phosphate.,catalytic activity:Protein tyrosine phosphate + H(2)O = protein tyrosine + phosphate.,function:Activates the Jnk signaling pathway. Dephosphorylates and deactivates p38 and stress-activated protein kinase/c-Jun N-terminal kinase (SAPK/JNK).,similarity:Belongs to the protein-tyrosine phosphatase family. Non-receptor class dual specificity subfamily.,similarity:Contains 1 tyrosine-protein phosphatase domain.,tissue specificity:Ubiquitous. Highest expression seen in heart, placenta, lung, liver, kidney and pancreas.,

**Function :**

catalytic activity:A phosphoprotein + H(2)O = a protein + phosphate.,catalytic activity:Protein tyrosine phosphate + H(2)O = protein tyrosine + phosphate.,function:Activates the Jnk signaling pathway. Dephosphorylates and deactivates p38 and stress-activated protein kinase/c-Jun N-terminal kinase (SAPK/JNK).,similarity:Belongs to the protein-tyrosine phosphatase family. Non-receptor class dual specificity subfamily.,similarity:Contains 1 tyrosine-protein phosphatase domain.,tissue specificity:Ubiquitous. Highest expression seen in heart, placenta, lung, liver, kidney and pancreas.,

**Subcellular Location :**

Cytoplasm .

**Expression :**

Ubiquitous. Highest expression seen in heart, placenta, lung, liver, kidney and pancreas.

**Sort :**

24143

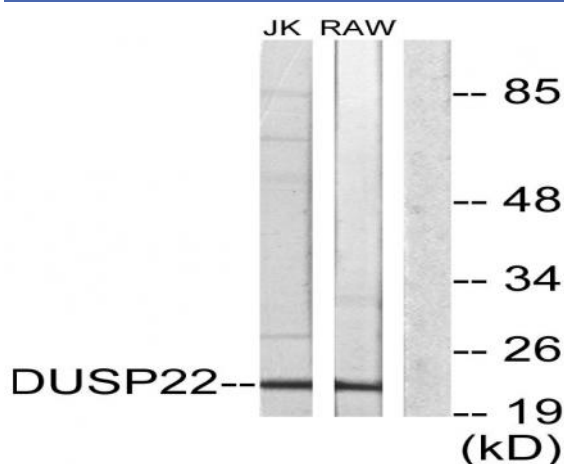
**Host :**

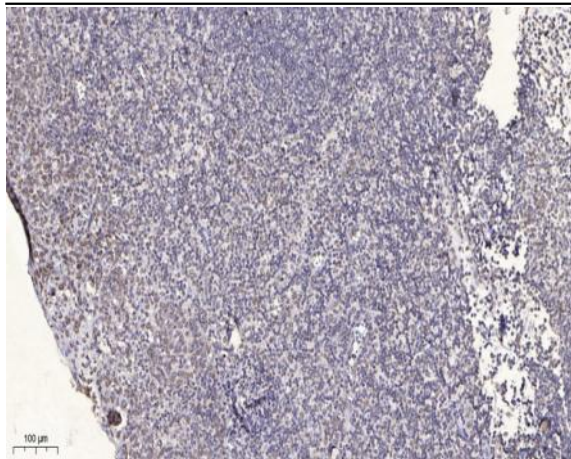
Rabbit

**Modifications :**

Unmodified

## Products Images





Immunohistochemical analysis of paraffin-embedded human tonsil. 1, Antibody was diluted at 1:200(4 ° overnight). 2, Tris-EDTA,pH9.0 was used for antigen retrieval. 3,Secondary antibody was diluted at 1:200(room temperature, 30min).