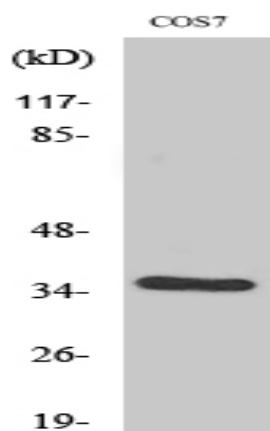


## VEGF-D Polyclonal Antibody

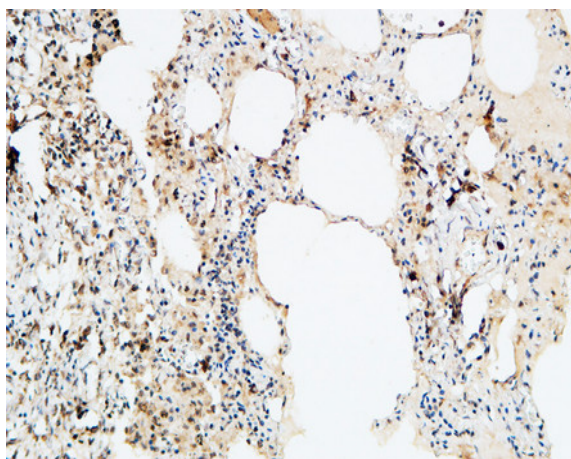
<b>Catalog No :</b>	YT4872
<b>Reactivity :</b>	Human;Mouse;Rat;Monkey
<b>Applications :</b>	WB;IHC;IF;ELISA
<b>Target :</b>	VEGF-D
<b>Fields :</b>	>>MAPK signaling pathway;>>Ras signaling pathway;>>Rap1 signaling pathway;>>Calcium signaling pathway;>>PI3K-Akt signaling pathway;>>Focal adhesion;>>TNF signaling pathway;>>Relaxin signaling pathway;>>AGE-RAGE signaling pathway in diabetic complications;>>Pathways in cancer
<b>Gene Name :</b>	FIGF
<b>Protein Name :</b>	Vascular endothelial growth factor D
<b>Human Gene Id :</b>	2277
<b>Human Swiss Prot No :</b>	O43915
<b>Mouse Gene Id :</b>	14205
<b>Mouse Swiss Prot No :</b>	P97946
<b>Rat Gene Id :</b>	360457
<b>Rat Swiss Prot No :</b>	O35251
<b>Immunogen :</b>	The antiserum was produced against synthesized peptide derived from human VEGF-D. AA range:153-202
<b>Specificity :</b>	VEGF-D Polyclonal Antibody detects endogenous levels of VEGF-D protein.
<b>Formulation :</b>	Liquid in PBS containing 50% glycerol, 0.5% BSA and 0.02% sodium azide.
<b>Source :</b>	Polyclonal, Rabbit,IgG

<b>Dilution :</b>	WB 1:500 - 1:2000. IHC 1:100 - 1:300. ELISA: 1:40000.. IF 1:50-200
<b>Purification :</b>	The antibody was affinity-purified from rabbit antiserum by affinity-chromatography using epitope-specific immunogen.
<b>Concentration :</b>	1 mg/ml
<b>Storage Stability :</b>	-15°C to -25°C/1 year(Do not lower than -25°C)
<b>Observed Band :</b>	35kD
<b>Cell Pathway :</b>	Cytokine-cytokine receptor interaction;mTOR;Focal adhesion;Pathways in cancer;Renal cell carcinoma;Pancreatic cancer;Bladder cancer;
<b>Background :</b>	The protein encoded by this gene is a member of the platelet-derived growth factor/vascular endothelial growth factor (PDGF/VEGF) family and is active in angiogenesis, lymphangiogenesis, and endothelial cell growth. This secreted protein undergoes a complex proteolytic maturation, generating multiple processed forms which bind and activate VEGFR-2 and VEGFR-3 receptors. This protein is structurally and functionally similar to vascular endothelial growth factor C. Read-through transcription has been observed between this locus and the upstream PIR (GeneID 8544) locus. [provided by RefSeq, Feb 2011],
<b>Function :</b>	function:Growth factor active in angiogenesis, lymphangiogenesis and endothelial cell growth, stimulating their proliferation and migration and also has effects on the permeability of blood vessels. May function in the formation of the venous and lymphatic vascular systems during embryogenesis, and also in the maintenance of differentiated lymphatic endothelium in adults. Binds and activates VEGFR-2 (Flk1) and VEGFR-3 (Flt4) receptors.,PTM:Undergoes a complex proteolytic maturation which generates a variety of processed secreted forms with increased activity toward VEGFR-3 and VEGFR-2. VEGF-D first form an antiparallel homodimer linked by disulfide bonds before secretion. The fully processed VEGF-D is composed mostly of two VEGF homology domains (VHDs) bound by non-covalent interactions.,similarity:Belongs to the PDGF/VEGF growth factor family.,subunit:Homodimer; non-covalent and antipar
<b>Subcellular Location :</b>	Secreted.
<b>Expression :</b>	Highly expressed in lung, heart, small intestine and fetal lung, and at lower levels in skeletal muscle, colon, and pancreas.
<b>Sort :</b>	24124
<b>Host :</b>	Rabbit
<b>Modifications :</b>	Unmodified

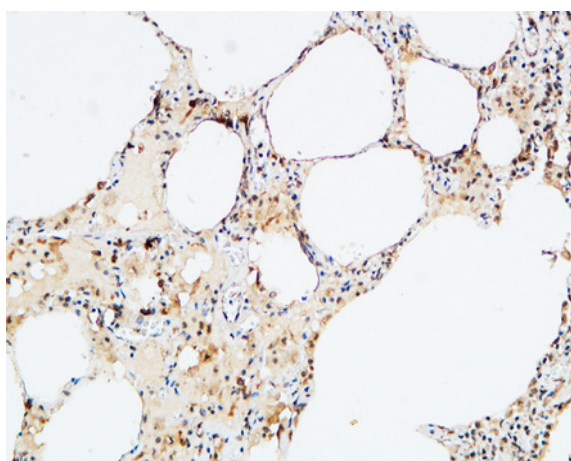
## Products Images



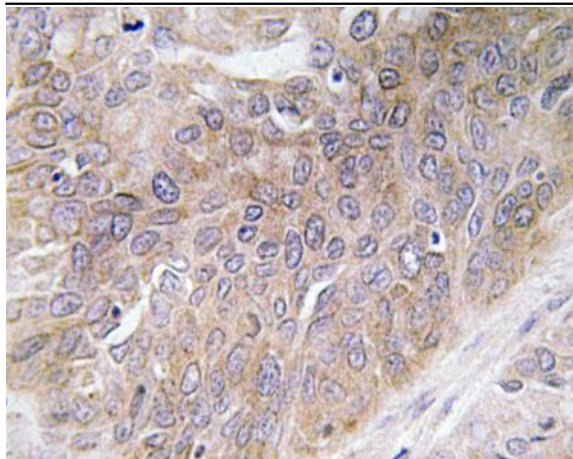
Western Blot analysis of various cells using VEGF-D Polyclonal Antibody. Secondary antibody(catalog#:RS0002) was diluted at 1:20000



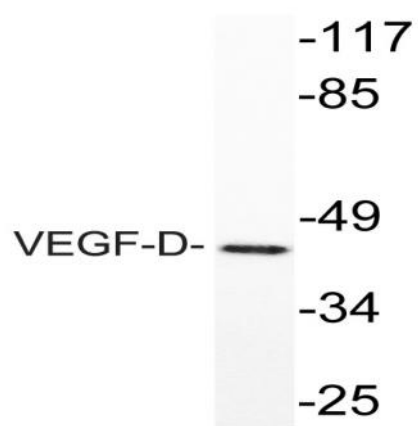
Immunohistochemical analysis of paraffin-embedded Human lung. 1, Antibody was diluted at 1:100(4° overnight). 2, High-pressure and temperature EDTA, pH8.0 was used for antigen retrieval. 3,Secondary antibody was diluted at 1:200(room temperature, 30min).



Immunohistochemical analysis of paraffin-embedded Human lung. 1, Antibody was diluted at 1:100(4° overnight). 2, High-pressure and temperature EDTA, pH8.0 was used for antigen retrieval. 3,Secondary antibody was diluted at 1:200(room temperature, 30min).



Immunohistochemistry analysis of VEGF-D antibody in paraffin-embedded human lung carcinoma tissue.



Western blot analysis of lysate from COS-7 cells, using VEGF-D antibody.