

V1RL3 Polyclonal Antibody

Catalog No :	YT4848
Reactivity :	Human;Rat;Mouse;
Applications :	WB;IF;ELISA
Target :	V1RL3
Gene Name :	VN1R3
Protein Name :	Vomeronasal type-1 receptor 3
Human Gene Id :	317702
Human Swiss Prot No :	Q9BXE9
Immunogen :	The antiserum was produced against synthesized peptide derived from human VN1R3. AA range:129-178
Specificity :	V1RL3 Polyclonal Antibody detects endogenous levels of V1RL3 protein.
Formulation :	Liquid in PBS containing 50% glycerol, 0.5% BSA and 0.02% sodium azide.
Source :	Polyclonal, Rabbit,IgG
Dilution :	WB 1:500 - 1:2000. IF 1:200 - 1:1000. ELISA: 1:5000. Not yet tested in other applications.
Purification :	The antibody was affinity-purified from rabbit antiserum by affinity-chromatography using epitope-specific immunogen.
Concentration :	1 mg/ml
Storage Stability :	-15°C to -25°C/1 year(Do not lower than -25°C)
Observed Band :	35kD
Background :	function:Putative pheromone receptor.,miscellaneous:The gorilla and orangutan

orthologous proteins do not exist, their genes are pseudogenes.,online information:No one nose - Issue 61 of August 2005,polymorphism:There seems to be a deletion in the gene coding for this protein in about 98% of the population.,similarity:Belongs to the G-protein coupled receptor 1 family.,

Function :

function:Putative pheromone receptor.,miscellaneous:The gorilla and orangutan orthologous proteins do not exist, their genes are pseudogenes.,online information:No one nose - Issue 61 of August 2005,polymorphism:There seems to be a deletion in the gene coding for this protein in about 98% of the population.,similarity:Belongs to the G-protein coupled receptor 1 family.,

Subcellular Location :

Cell membrane; Multi-pass membrane protein.

Sort :

24031

No4 :

1

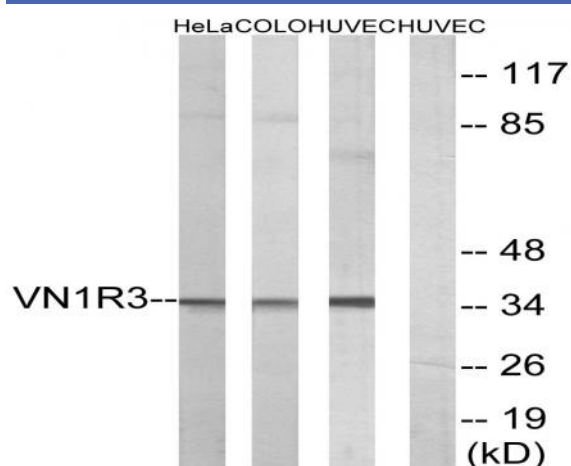
Host :

Rabbit

Modifications :

Unmodified

Products Images



Western blot analysis of lysates from HUVEC, HeLa, and COLO cells, using VN1R3 Antibody. The lane on the right is blocked with the synthesized peptide.