

TLK1 Polyclonal Antibody

Catalog No :	YT4672
Reactivity :	Human;Rat;Mouse;
Applications :	WB;ELISA;IHC
Target :	TLK1
Gene Name :	TLK1
Protein Name :	Serine/threonine-protein kinase tousel-like 1
Human Gene Id :	9874
Human Swiss Prot No :	Q9UKI8
Mouse Swiss Prot No :	Q8C0V0
Immunogen :	The antiserum was produced against synthesized peptide derived from human TLK1. AA range:201-250
Specificity :	TLK1 Polyclonal Antibody detects endogenous levels of TLK1 protein.
Formulation :	Liquid in PBS containing 50% glycerol, 0.5% BSA and 0.02% sodium azide.
Source :	Polyclonal, Rabbit,IgG
Dilution :	WB 1:500-2000;IHC 1:50-300; ELISA 2000-20000
Purification :	The antibody was affinity-purified from rabbit antiserum by affinity-chromatography using epitope-specific immunogen.
Concentration :	1 mg/ml
Storage Stability :	-15°C to -25°C/1 year(Do not lower than -25°C)
Observed Band :	87kD

Background :

Serine/threonine-protein kinase tousel-like 1 encoded by TLK1 is a serine/threonine kinase that may be involved in the regulation of chromatin assembly. The encoded protein is only active when it is phosphorylated, and this phosphorylation is cell cycle-dependent, with the maximal activity of this protein coming during S phase. The catalytic activity of this protein is diminished by DNA damage and by blockage of DNA replication. Three transcript variants encoding different isoforms have been found for this gene.

Subcellular

Location :

Nucleus .

Expression :

Widely expressed. Present in fetal placenta, liver, kidney and pancreas but not heart or skeletal muscle. Also found in adult cell lines. Isoform 3 is ubiquitously expressed in all tissues examined.

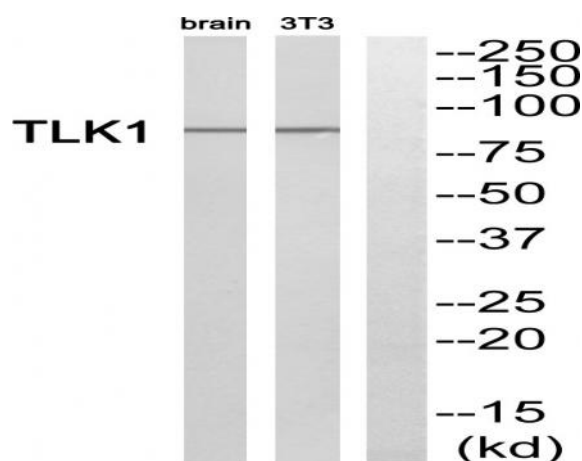
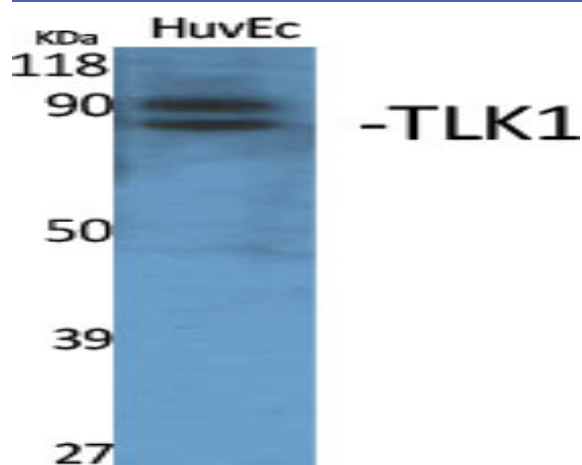
Sort :

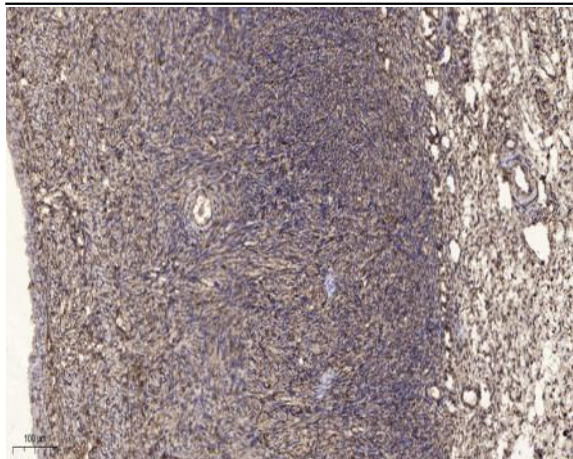
17194

No4 :

1

Products Images





Immunohistochemical analysis of paraffin-embedded human oophoroma. 1, Antibody was diluted at 1:200(4° overnight). 2, Tris-EDTA,pH9.0 was used for antigen retrieval. 3,Secondary antibody was diluted at 1:200(room temperature, 45min).