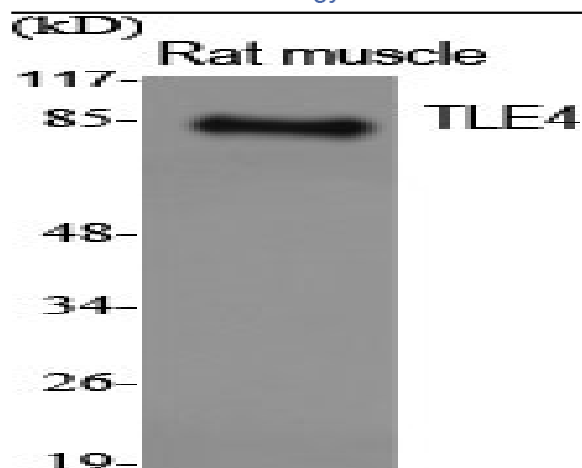


TLE4 Polyclonal Antibody

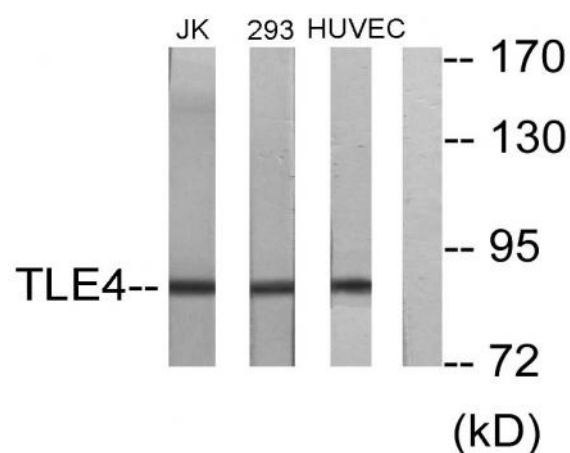
Catalog No :	YT4671
Reactivity :	Human;Mouse;Rat
Applications :	WB;IHC;IF;ELISA
Target :	TLE4
Fields :	>>Wnt signaling pathway;>>Notch signaling pathway
Gene Name :	TLE4
Protein Name :	Transducin-like enhancer protein 4
Human Gene Id :	7091
Human Swiss Prot No :	Q04727
Mouse Gene Id :	21888
Mouse Swiss Prot No :	Q62441
Rat Gene Id :	25565
Rat Swiss Prot No :	Q07141
Immunogen :	The antiserum was produced against synthesized peptide derived from human TLE4. AA range:161-210
Specificity :	TLE4 Polyclonal Antibody detects endogenous levels of TLE4 protein.
Formulation :	Liquid in PBS containing 50% glycerol, 0.5% BSA and 0.02% sodium azide.
Source :	Polyclonal, Rabbit,IgG
Dilution :	WB 1:500 - 1:2000. IHC 1:100 - 1:300. ELISA: 1:20000.. IF 1:50-200

Purification :	The antibody was affinity-purified from rabbit antiserum by affinity-chromatography using epitope-specific immunogen.
Concentration :	1 mg/ml
Storage Stability :	-15°C to -25°C/1 year(Do not lower than -25°C)
Observed Band :	83kD
Background :	caution:Product of a dubious CDS prediction. Found in the 3'UTR of TLE4. No homolog. Large scale identification of a phosphorylated peptide (PubMed:15302935) would require further confirmation.,function:Transcriptional corepressor that binds to a number of transcription factors. Inhibits the transcriptional activation mediated by PAX5, and by CTNNB1 and TCF family members in Wnt signaling. The effects of full-length TLE family members may be modulated by association with dominant-negative AES.,similarity:Belongs to the WD repeat Groucho/TLE family.,similarity:Contains 7 WD repeats.,subunit:Homooligomer and heterooligomer with other family members. Binds PAX5, LEF1, TCF7, TCF7L1 and TCF7L2.,tissue specificity:In all tissues examined, mostly in brain, and muscle.,
Function :	caution:Product of a dubious CDS prediction. Found in the 3'UTR of TLE4. No homolog. Large scale identification of a phosphorylated peptide (PubMed:15302935) would require further confirmation.,function:Transcriptional corepressor that binds to a number of transcription factors. Inhibits the transcriptional activation mediated by PAX5, and by CTNNB1 and TCF family members in Wnt signaling. The effects of full-length TLE family members may be modulated by association with dominant-negative AES.,similarity:Belongs to the WD repeat Groucho/TLE family.,similarity:Contains 7 WD repeats.,subunit:Homooligomer and heterooligomer with other family members. Binds PAX5, LEF1, TCF7, TCF7L1 and TCF7L2.,tissue specificity:In all tissues examined, mostly in brain, and muscle.,
Subcellular Location :	Nucleus.
Expression :	In all tissues examined, mostly in brain, and muscle.
Sort :	17192
No4 :	1

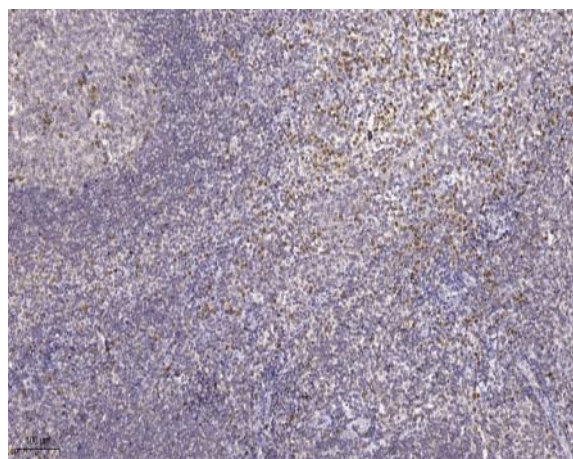
Products Images



Western Blot analysis of various cells using TLE4 Polyclonal Antibody. Secondary antibody(catalog#:RS0002) was diluted at 1:20000 cells nucleus extracted by Minute TM Cytoplasmic and Nuclear Fractionation kit (SC-003, Inventbiotech, MN, USA).



Western blot analysis of lysates from Jurkat, 293, and HUVEC cells, using TLE4 Antibody. The lane on the right is blocked with the synthesized peptide.



Immunohistochemical analysis of paraffin-embedded human tonsil. 1, Tris-EDTA, pH 9.0 was used for antigen retrieval. 2 Antibody was diluted at 1:200 (4° overnight). 3, Secondary antibody was diluted at 1:200 (room temperature, 45min).