

TLE2 Polyclonal Antibody

Catalog No :	YT4670
Reactivity :	Human;Rat;Mouse;
Applications :	WB;IHC;IF;ELISA
Target :	TLE2
Fields :	>>Wnt signaling pathway;>>Notch signaling pathway
Gene Name :	TLE2
Protein Name :	Transducin-like enhancer protein 2
Human Gene Id :	7089
Human Swiss Prot No :	Q04725
Mouse Swiss Prot No :	Q9WVB2
Immunogen :	The antiserum was produced against synthesized peptide derived from human TLE2. AA range:211-260
Specificity :	TLE2 Polyclonal Antibody detects endogenous levels of TLE2 protein.
Formulation :	Liquid in PBS containing 50% glycerol, 0.5% BSA and 0.02% sodium azide.
Source :	Polyclonal, Rabbit,IgG
Dilution :	WB 1:500 - 1:2000. IHC 1:100 - 1:300. ELISA: 1:20000.. IF 1:50-200
Purification :	The antibody was affinity-purified from rabbit antiserum by affinity-chromatography using epitope-specific immunogen.
Concentration :	1 mg/ml
Storage Stability :	-15°C to -25°C/1 year(Do not lower than -25°C)

Observed Band : 110kD

Background : function:Transcriptional corepressor that binds to a number of transcription factors. Inhibits the transcriptional activation mediated by CTNNB1 and TCF family members in Wnt signaling. The effects of full-length TLE family members may be modulated by association with dominant-negative AES.,similarity:Belongs to the WD repeat Groucho/TLE family.,similarity:Contains 6 WD repeats.,subunit:Homooligomer and heterooligomer with other family members. Binds LEF1, TCF7, TCF7L1, TCF7L2, UTY, HES1 and HES5.,tissue specificity:In all tissues examined, mostly in heart, brain, and muscle.,

Function : function:Transcriptional corepressor that binds to a number of transcription factors. Inhibits the transcriptional activation mediated by CTNNB1 and TCF family members in Wnt signaling. The effects of full-length TLE family members may be modulated by association with dominant-negative AES.,similarity:Belongs to the WD repeat Groucho/TLE family.,similarity:Contains 6 WD repeats.,subunit:Homooligomer and heterooligomer with other family members. Binds LEF1, TCF7, TCF7L1, TCF7L2, UTY, HES1 and HES5.,tissue specificity:In all tissues examined, mostly in heart, brain, and muscle.,

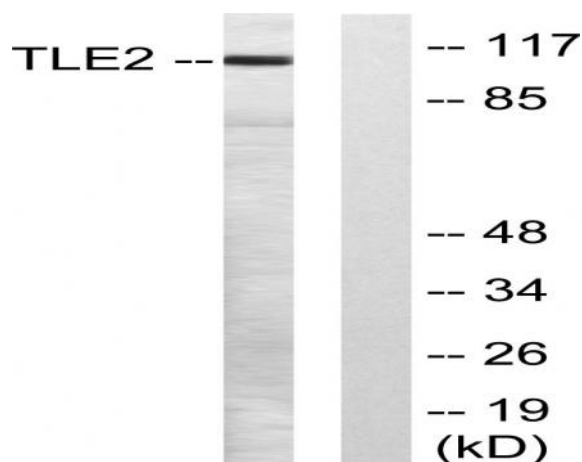
Subcellular Location : Nucleus.

Expression : In all tissues examined, mostly in heart, brain, and muscle.

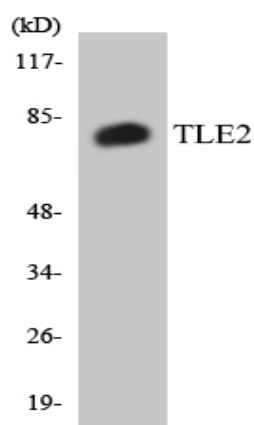
Sort : 17191

No4 : 1

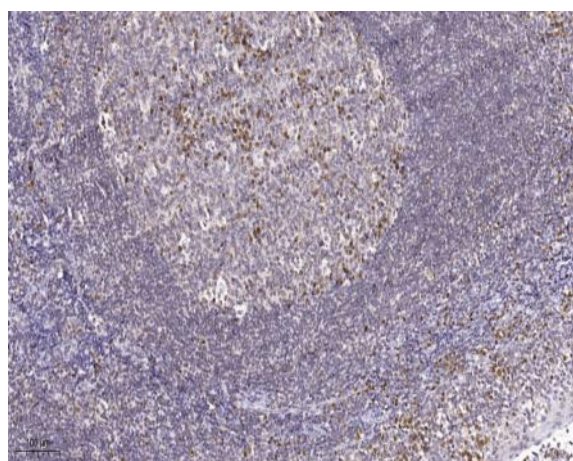
Products Images



Western blot analysis of lysates from LOVO cells, using TLE2 Antibody. The lane on the right is blocked with the synthesized peptide.



Western blot analysis of the lysates from HT-29 cells using TLE2 antibody.



Immunohistochemical analysis of paraffin-embedded human tonsil. 1, Tris-EDTA, pH 9.0 was used for antigen retrieval. 2 Antibody was diluted at 1:200 (4° overnight). 3, Secondary antibody was diluted at 1:200 (room temperature, 45min).