

## TWIK-2 Polyclonal Antibody

<b>Catalog No :</b>	YT4787
<b>Reactivity :</b>	Human;Rat;Mouse;
<b>Applications :</b>	WB;ELISA
<b>Target :</b>	TWIK-2
<b>Gene Name :</b>	KCNK6
<b>Protein Name :</b>	Potassium channel subfamily K member 6
<b>Human Gene Id :</b>	9424
<b>Human Swiss Prot No :</b>	Q9Y257
<b>Immunogen :</b>	Synthesized peptide derived from TWIK-2 . at AA range: 240-320
<b>Specificity :</b>	TWIK-2 Polyclonal Antibody detects endogenous levels of TWIK-2 protein.
<b>Formulation :</b>	Liquid in PBS containing 50% glycerol, 0.5% BSA and 0.02% sodium azide.
<b>Source :</b>	Polyclonal, Rabbit,IgG
<b>Dilution :</b>	WB 1:500 - 1:2000. ELISA: 1:5000. Not yet tested in other applications.
<b>Purification :</b>	The antibody was affinity-purified from rabbit antiserum by affinity-chromatography using epitope-specific immunogen.
<b>Concentration :</b>	1 mg/ml
<b>Storage Stability :</b>	-15°C to -25°C/1 year(Do not lower than -25°C)
<b>Observed Band :</b>	33kD
<b>Background :</b>	This gene encodes one of the members of the superfamily of potassium channel proteins containing two pore-forming P domains. This channel protein, considered an open rectifier, is widely expressed. It is stimulated by arachidonic acid, and

inhibited by internal acidification and volatile anaesthetics. [provided by RefSeq, Jul 2008],

**Function :**

function:Exhibits outward rectification in a physiological K(+) gradient and mild inward rectification in symmetrical K(+) conditions.,miscellaneous:Inhibited by internal acidification and, to a small degree, by zinc. Not inhibited by quinine, quinidine or barium.,similarity:Belongs to the two pore domain potassium channel (TC 1.A.1.8) family.,subunit:Homodimer .,tissue specificity:Widespread expression, detected in all tissues tested except for skeletal muscle. Strongest expression in placenta, pancreas, heart, colon and spleen, lower levels detected in peripheral blood leukocytes, lung, liver, kidney and thymus. Lowest expression detected in brain.,

**Subcellular Location :**

Membrane ; Multi-pass membrane protein .

**Expression :**

Widespread expression, detected in all tissues tested except for skeletal muscle. Strongest expression in placenta, pancreas, heart, colon and spleen, lower levels detected in peripheral blood leukocytes, lung, liver, kidney and thymus. Lowest expression detected in brain.

**Sort :**

23770

**No4 :**

1

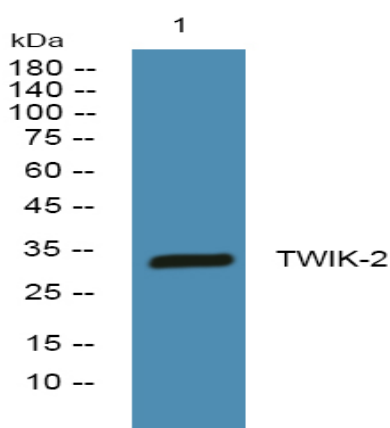
**Host :**

Rabbit

**Modifications :**

Unmodified

## Products Images



Western blot analysis of lysates from DU145 cells, primary antibody was diluted at 1:1000, 4° over night