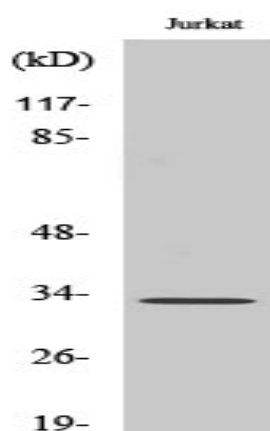


TFIIIE-β Polyclonal Antibody

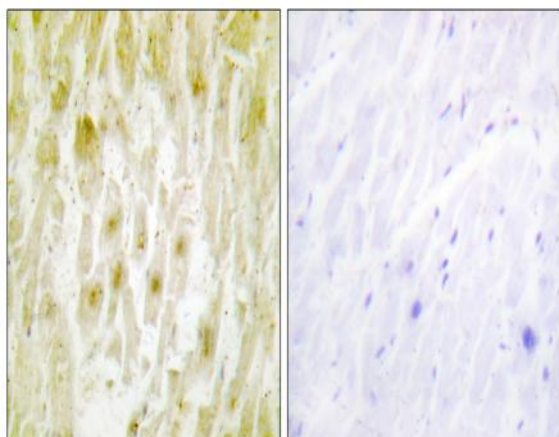
Catalog No :	YT4616
Reactivity :	Human;Mouse
Applications :	WB;IHC;IF;ELISA
Target :	TFIIIE-β
Fields :	>>Basal transcription factors;>>Viral carcinogenesis
Gene Name :	GTF2E2
Protein Name :	Transcription initiation factor IIE subunit beta
Human Gene Id :	2961
Human Swiss Prot No :	P29084
Mouse Gene Id :	68153
Mouse Swiss Prot No :	Q9D902
Immunogen :	The antiserum was produced against synthesized peptide derived from human TF2E2. AA range:151-200
Specificity :	TFIIIE-β Polyclonal Antibody detects endogenous levels of TFIIIE-β protein.
Formulation :	Liquid in PBS containing 50% glycerol, 0.5% BSA and 0.02% sodium azide.
Source :	Polyclonal, Rabbit,IgG
Dilution :	WB 1:500 - 1:2000. IHC 1:100 - 1:300. ELISA: 1:20000.. IF 1:50-200
Purification :	The antibody was affinity-purified from rabbit antiserum by affinity-chromatography using epitope-specific immunogen.
Concentration :	1 mg/ml

Storage Stability :	-15°C to -25°C/1 year(Do not lower than -25°C)
Observed Band :	33kD
Cell Pathway :	Basal transcription factors;
Background :	function:Recruits TFIIH to the initiation complex and stimulates the RNA polymerase II C-terminal domain kinase and DNA-dependent ATPase activities of TFIIH. Both TFIIH and TFIIIE are required for promoter clearance by RNA polymerase.,similarity:Belongs to the TFIIIE beta subunit family.,similarity:Contains 1 TFIIIE beta DNA-binding domain.,subunit:Tetramer of two alpha and two beta chains. Interacts with FACT subunit SUPT16H.,
Function :	function:Recruits TFIIH to the initiation complex and stimulates the RNA polymerase II C-terminal domain kinase and DNA-dependent ATPase activities of TFIIH. Both TFIIH and TFIIIE are required for promoter clearance by RNA polymerase.,similarity:Belongs to the TFIIIE beta subunit family.,similarity:Contains 1 TFIIIE beta DNA-binding domain.,subunit:Tetramer of two alpha and two beta chains. Interacts with FACT subunit SUPT16H.,
Subcellular Location :	Nucleus .
Expression :	Skin,
Sort :	17065
No4 :	1

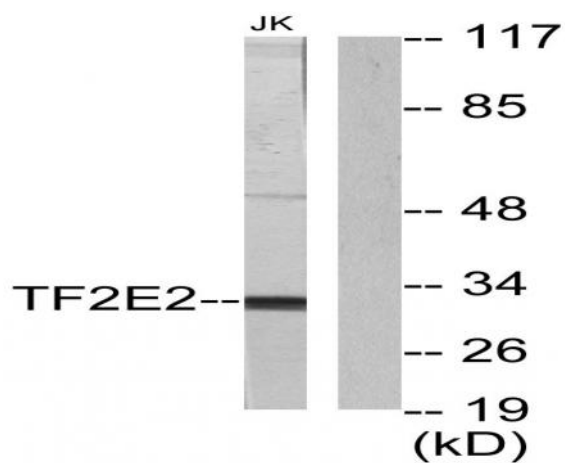
Products Images



Western Blot analysis of various cells using TFIIIE-β Polyclonal Antibody cells nucleus extracted by Minute TM Cytoplasmic and Nuclear Fractionation kit (SC-003, Invent biotech, MN, USA).



Immunohistochemistry analysis of paraffin-embedded human heart tissue, using TF2E2 Antibody. The picture on the right is blocked with the synthesized peptide.



Western blot analysis of lysates from Jurkat cells, using TF2E2 Antibody. The lane on the right is blocked with the synthesized peptide.