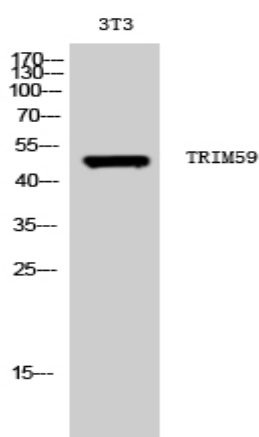


## TRIM59 Polyclonal Antibody

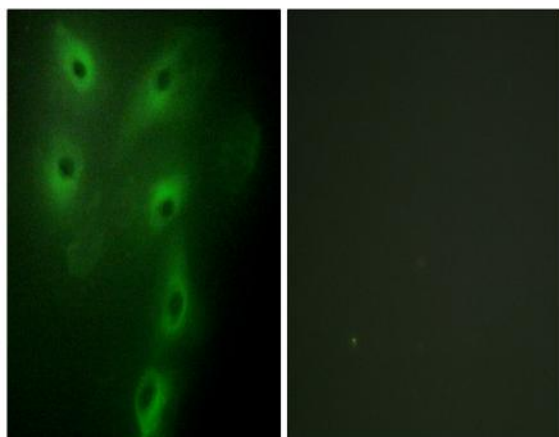
<b>Catalog No :</b>	YT4737
<b>Reactivity :</b>	Human;Mouse
<b>Applications :</b>	WB;IHC;IF;ELISA
<b>Target :</b>	TRIM59
<b>Gene Name :</b>	TRIM59
<b>Protein Name :</b>	Tripartite motif-containing protein 59
<b>Human Gene Id :</b>	286827
<b>Human Swiss Prot No :</b>	Q8IWR1
<b>Mouse Gene Id :</b>	66949
<b>Mouse Swiss Prot No :</b>	Q922Y2
<b>Immunogen :</b>	The antiserum was produced against synthesized peptide derived from human TRIM59. AA range:191-240
<b>Specificity :</b>	TRIM59 Polyclonal Antibody detects endogenous levels of TRIM59 protein.
<b>Formulation :</b>	Liquid in PBS containing 50% glycerol, 0.5% BSA and 0.02% sodium azide.
<b>Source :</b>	Polyclonal, Rabbit,IgG
<b>Dilution :</b>	WB 1:500 - 1:2000. IHC 1:100 - 1:300. IF 1:200 - 1:1000. ELISA: 1:40000. Not yet tested in other applications.
<b>Purification :</b>	The antibody was affinity-purified from rabbit antiserum by affinity-chromatography using epitope-specific immunogen.
<b>Concentration :</b>	1 mg/ml
<b>Storage Stability :</b>	-15°C to -25°C/1 year(Do not lower than -25°C)

<b>Observed Band :</b>	47kD
<b>Background :</b>	similarity:Belongs to the TRIM/RBCC family.,similarity:Contains 1 B box-type zinc finger.,similarity:Contains 1 RING-type zinc finger.,
<b>Function :</b>	similarity:Belongs to the TRIM/RBCC family.,similarity:Contains 1 B box-type zinc finger.,similarity:Contains 1 RING-type zinc finger.,
<b>Subcellular Location :</b>	Endoplasmic reticulum membrane ; Single-pass membrane protein .
<b>Expression :</b>	Human testis,
<b>Tag :</b>	orthogonal
<b>Sort :</b>	1249
<b>Host :</b>	Rabbit
<b>Modifications :</b>	Unmodified

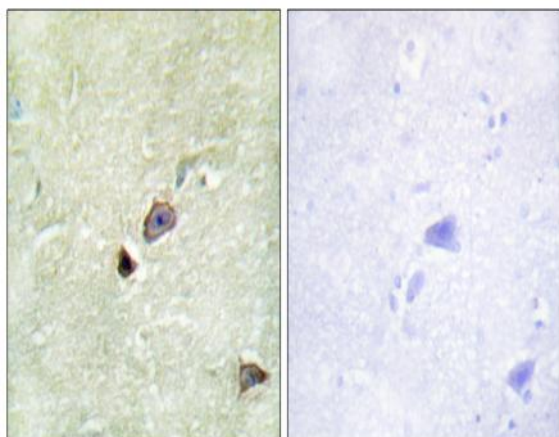
## Products Images



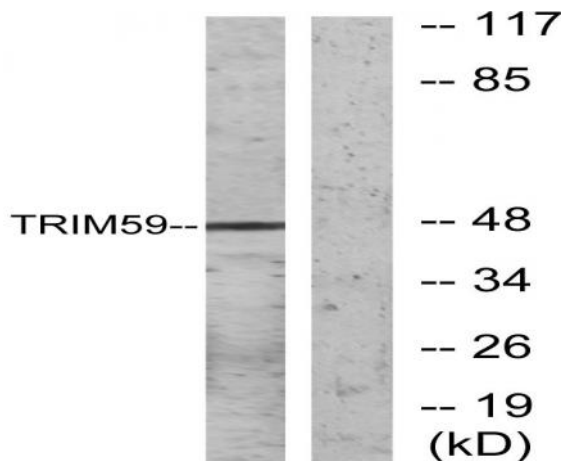
Western Blot analysis of 3T3 cells using TRIM59 Polyclonal Antibody. Secondary antibody(catalog#:RS0002) was diluted at 1:20000



Immunofluorescence analysis of HeLa cells, using TRIM59 Antibody. The picture on the right is blocked with the synthesized peptide.



Immunohistochemistry analysis of paraffin-embedded human brain tissue, using TRIM59 Antibody. The picture on the right is blocked with the synthesized peptide.



Western blot analysis of lysates from NIH/3T3 cells, using TRIM59 Antibody. The lane on the right is blocked with the synthesized peptide.