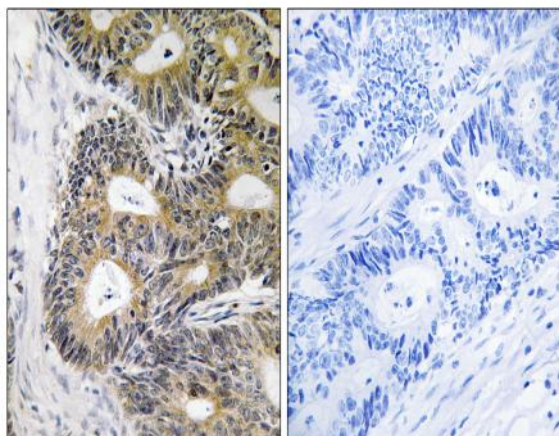


TRAPPC6A Polyclonal Antibody

Catalog No :	YT4730
Reactivity :	Human;Rat;Mouse;
Applications :	IHC;IF;ELISA
Target :	TRAPPC6A
Gene Name :	TRAPPC6A
Protein Name :	Trafficking protein particle complex subunit 6A
Human Gene Id :	79090
Human Swiss Prot No :	O75865
Mouse Swiss Prot No :	Q78XR0
Immunogen :	The antiserum was produced against synthesized peptide derived from human TRAPPC6A. AA range:31-80
Specificity :	TRAPPC6A Polyclonal Antibody detects endogenous levels of TRAPPC6A protein.
Formulation :	Liquid in PBS containing 50% glycerol, 0.5% BSA and 0.02% sodium azide.
Source :	Polyclonal, Rabbit,IgG
Dilution :	IHC 1:100 - 1:300. ELISA: 1:40000.. IF 1:50-200
Purification :	The antibody was affinity-purified from rabbit antiserum by affinity-chromatography using epitope-specific immunogen.
Concentration :	1 mg/ml
Storage Stability :	-15°C to -25°C/1 year(Do not lower than -25°C)
Molecularweight :	18kD

Background :	This gene encodes a component of the trafficking protein particle complex, which tethers transport vesicles to the cis-Golgi membrane. Loss of expression of the related gene in mouse affects coat and eye pigmentation, suggesting that the encoded protein may be involved in melanosome biogenesis. Alternatively spliced transcript variants encoding multiple isoforms have been observed for this gene. [provided by RefSeq, Aug 2012],
Function :	function:May play a role in vesicular transport during the biogenesis of melanosomes.,similarity:Belongs to the TRAPP small subunits family. BET3 subfamily.,subunit:Part of the multisubunit TRAPP (transport protein particle) complex. Heterodimer with TRAPPC3.,
Subcellular Location :	Golgi apparatus, cis-Golgi network . Endoplasmic reticulum .
Expression :	Lung,Umbilical cord blood,
Sort :	23508
No4 :	1
Host :	Rabbit
Modifications :	Unmodified

Products Images



Immunohistochemistry analysis of paraffin-embedded human colon carcinoma, using TRAPPC6A Antibody. The picture on the right is blocked with the synthesized peptide.