

## TRAF2 Polyclonal Antibody

<b>Catalog No :</b>	YT4717
<b>Reactivity :</b>	Human;Rat;Mouse;Bovine
<b>Applications :</b>	WB;IHC;IF;ELISA
<b>Target :</b>	TRAF2
<b>Fields :</b>	>>MAPK signaling pathway;>>NF-kappa B signaling pathway;>>Sphingolipid signaling pathway;>>Protein processing in endoplasmic reticulum;>>Apoptosis;>>Necroptosis;>>Osteoclast differentiation;>>NOD-like receptor signaling pathway;>>RIG-I-like receptor signaling pathway;>>IL-17 signaling pathway;>>TNF signaling pathway;>>Adipocytokine signaling pathway;>>Non-alcoholic fatty liver disease;>>Alzheimer disease;>>Amyotrophic lateral sclerosis;>>Huntington disease;>>Spinocerebellar ataxia;>>Pathways of neurodegeneration - multiple diseases;>>Pathogenic Escherichia coli infection;>>Shigellosis;>>Salmonella infection;>>Yersinia infection;>>Hepatitis C;>>Human cytomegalovirus infection;>>Kaposi sarcoma-associated herpesvirus infection;>>Herpes simplex virus 1 infection;>>Epstein-Barr virus infection;>>Human immunodeficiency virus 1 infection;>>Pathways in cancer;>>Viral carcinogenesis;>>Small cell lung cancer;>>Lipid and atherosclerosis
<b>Gene Name :</b>	TRAF2
<b>Protein Name :</b>	TNF receptor-associated factor 2
<b>Human Gene Id :</b>	7186
<b>Human Swiss Prot No :</b>	Q12933
<b>Mouse Swiss Prot No :</b>	P39429
<b>Immunogen :</b>	Synthesized peptide derived from the Internal region of human TRAF2.
<b>Specificity :</b>	TRAF2 Polyclonal Antibody detects endogenous levels of TRAF2 protein.
<b>Formulation :</b>	Liquid in PBS containing 50% glycerol, 0.5% BSA and 0.02% sodium azide.

<b>Source :</b>	Polyclonal, Rabbit,IgG
<b>Dilution :</b>	WB 1:500 - 1:2000. IHC 1:100 - 1:300. ELISA: 1:10000.. IF 1:50-200
<b>Purification :</b>	The antibody was affinity-purified from rabbit antiserum by affinity-chromatography using epitope-specific immunogen.
<b>Concentration :</b>	1 mg/ml
<b>Storage Stability :</b>	-15°C to -25°C/1 year(Do not lower than -25°C)
<b>Observed Band :</b>	60kD
<b>Cell Pathway :</b>	MAPK_ERK_Growth;MAPK_G_Protein;Apoptosis_Inhibition;Apoptosis_Mitochondrial;Apoptosis_Overview;RIG-I-like receptor;Adipocytokine;Pathways in cancer;Small cell lung cancer;
<b>Background :</b>	TNF receptor associated factor 2(TRAF2) Homo sapiens The protein encoded by this gene is a member of the TNF receptor associated factor (TRAF) protein family. TRAF proteins associate with, and mediate the signal transduction from members of the TNF receptor superfamily. This protein directly interacts with TNF receptors, and forms a heterodimeric complex with TRAF1. This protein is required for TNF-alpha-mediated activation of MAPK8/JNK and NF-kappaB. The protein complex formed by this protein and TRAF1 interacts with the inhibitor-of-apoptosis proteins (IAPs), and functions as a mediator of the anti-apoptotic signals from TNF receptors. The interaction of this protein with TRADD, a TNF receptor associated apoptotic signal transducer, ensures the recruitment of IAPs for the direct inhibition of caspase activation. BIRC2/c-IAP1, an apoptosis inhibitor possessing ubiquitin ligase activity, can ubiquitinate and induce the degradation of this pro
<b>Function :</b>	domain:The coiled coil domain mediates homo- and hetero-oligomerization.,domain:The MATH/TRAF domain binds to receptor cytoplasmic domains.,function:Adapter protein and signal transducer that links members of the tumor necrosis factor receptor family to different signaling pathways by association with the receptor cytoplasmic domain and kinases. Association to the receptor is also mediated by the interaction with TRADD. Mediates activation of NF-kappa-B and JNK and is involved in apoptosis. The TRAF1/TRAF2 complex recruits the apoptotic suppressors BIRC2 and BIRC3 to TNFRSF1B/TNFR2. Seems to be involved in IL-15 signaling.,PTM:Ubiquitinated; mediated by SIAH2 and leading to its subsequent proteasomal degradation. Not ubiquitinated by SIAH1.,similarity:Contains 1 MATH domain.,similarity:Contains 1 RING-type zinc finger.,similarity:Contains 2 TRAF-type zinc fingers.,subunit:Homotrimer (Pro
<b>Subcellular Location :</b>	Cytoplasm .
	Brain,Cerebellum,Colon,Fetal brain,Human

**Expression :** endometrium,Kidney,Leukocyte,Splee

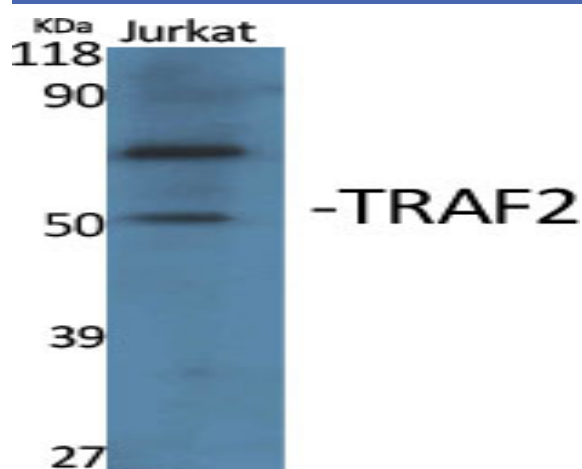
**Tag :** orthogonal

**Sort :** 23473

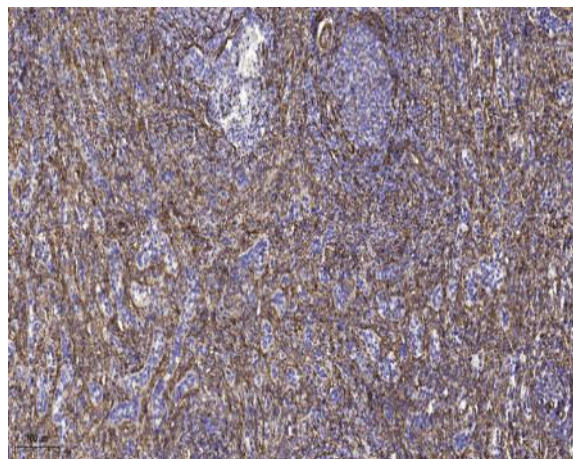
**Host :** Rabbit

**Modifications :** Unmodified

## Products Images



Western Blot analysis of various cells using TRAF2 Polyclonal Antibody. Secondary antibody(catalog#:RS0002) was diluted at 1:20000



Immunohistochemical analysis of paraffin-embedded human spleen tissue. 1,primary Antibody was diluted at 1:200(4° overnight). 2, Sodium citrate pH 6.0 was used for antigen retrieval(>98°C,20min). 3,Secondary antibody was diluted at 1:200