

Tip5 Polyclonal Antibody

Catalog No :	YT4663
Reactivity :	Human;Rat;Mouse;
Applications :	WB;IHC
Target :	Tip5
Gene Name :	BAZ2A
Protein Name :	Bromodomain adjacent to zinc finger domain protein 2A
Human Gene Id :	605682
Human Swiss Prot No :	Q9UIF9
Mouse Swiss Prot No :	Q91YE5
Immunogen :	The antiserum was produced against synthesized peptide derived from human BAZ2A. AA range:1281-1330
Specificity :	Tip5 Polyclonal Antibody detects endogenous levels of Tip5 protein.
Formulation :	Liquid in PBS containing 50% glycerol, 0.5% BSA and 0.02% sodium azide.
Source :	Polyclonal, Rabbit,IgG
Dilution :	WB 1:500-2000;IHC 1:50-300
Purification :	The antibody was affinity-purified from rabbit antiserum by affinity-chromatography using epitope-specific immunogen.
Concentration :	1 mg/ml
Storage Stability :	-15°C to -25°C/1 year(Do not lower than -25°C)
Observed Band :	210kD

Background : function:May play a role in transcriptional regulation interacting with ISWI. May serve a specific role in maintaining or altering the chromatin structure of the rDNA locus.,PTM:Phosphorylated upon DNA damage, probably by ATM or ATR.,sequence caution:Contaminating sequence. Potential poly-A sequence.,similarity:Belongs to the WAL family.,similarity:Contains 1 bromo domain.,similarity:Contains 1 DDT domain.,similarity:Contains 1 MBD (methyl-CpG-binding) domain.,similarity:Contains 1 PHD-type zinc finger.,similarity:Contains 4 A.T hook DNA-binding domains.,subcellular location:Colocalizes with the basal RNA polymerase I transcription factor UBF in the nucleolus.,subunit:Together with SMARCA5, it forms a complex termed NoRC (nucleolar remodeling complex),tissue specificity:Expressed at moderate levels in most tissues analyzed, including heart, brain, placenta, lung, skeletal muscle, kidney and pancreas.,

Function : function:May play a role in transcriptional regulation interacting with ISWI. May serve a specific role in maintaining or altering the chromatin structure of the rDNA locus.,PTM:Phosphorylated upon DNA damage, probably by ATM or ATR.,sequence caution:Contaminating sequence. Potential poly-A sequence.,similarity:Belongs to the WAL family.,similarity:Contains 1 bromo domain.,similarity:Contains 1 DDT domain.,similarity:Contains 1 MBD (methyl-CpG-binding) domain.,similarity:Contains 1 PHD-type zinc finger.,similarity:Contains 4 A.T hook DNA-binding domains.,subcellular location:Colocalizes with the basal RNA polymerase I transcription factor UBF in the nucleolus.,subunit:Together with SMARCA5, it forms a complex termed NoRC (nucleolar remodeling complex),tissue specificity:Expressed at moderate levels in most tissues analyzed, including heart, brain, placenta, lung, skeletal muscle, kidney

Subcellular Location : Nucleus, nucleolus . Colocalizes with the basal RNA polymerase I transcription factor UBF in the nucleolus. .

Expression : Expressed at moderate levels in most tissues analyzed, including heart, brain, placenta, lung, skeletal muscle, kidney and pancreas.

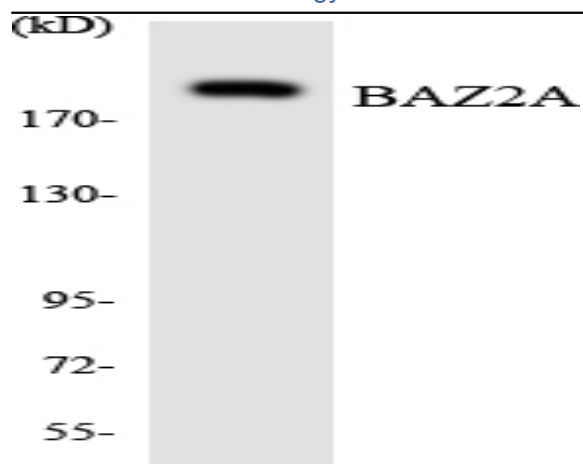
Sort : 17172

No4 : 1

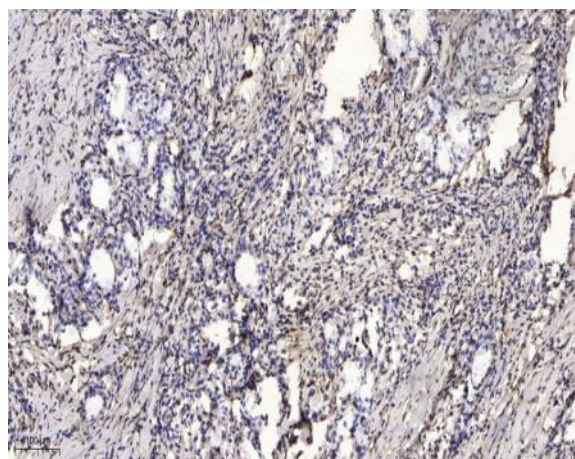
Host : Rabbit

Modifications : Unmodified

Products Images



Western blot analysis of the lysates from HeLa cells using BAZ2A antibody.



Immunohistochemical analysis of paraffin-embedded human Gastric adenocarcinoma. 1, Antibody was diluted at 1:200(4° overnight). 2, Tris-EDTA,pH9.0 was used for antigen retrieval. 3,Secondary antibody was diluted at 1:200(room temperature, 45min).