

## Tetraspanin-8 Polyclonal Antibody

<b>Catalog No :</b>	YT4609
<b>Reactivity :</b>	Human;Mouse;
<b>Applications :</b>	WB;IHC;IF;ELISA
<b>Target :</b>	Tetraspanin-8
<b>Gene Name :</b>	TSPAN8
<b>Protein Name :</b>	Tetraspanin-8
<b>Human Gene Id :</b>	7103
<b>Human Swiss Prot No :</b>	P19075
<b>Mouse Swiss Prot No :</b>	Q8R3G9
<b>Immunogen :</b>	The antiserum was produced against synthesized peptide derived from human TSPAN8. AA range:96-145
<b>Specificity :</b>	Tetraspanin-8 Polyclonal Antibody detects endogenous levels of Tetraspanin-8 protein.
<b>Formulation :</b>	Liquid in PBS containing 50% glycerol, 0.5% BSA and 0.02% sodium azide.
<b>Source :</b>	Polyclonal, Rabbit,IgG
<b>Dilution :</b>	WB 1:500 - 1:2000. IHC 1:100 - 1:300. IF 1:200 - 1:1000. ELISA: 1:20000. Not yet tested in other applications.
<b>Purification :</b>	The antibody was affinity-purified from rabbit antiserum by affinity-chromatography using epitope-specific immunogen.
<b>Concentration :</b>	1 mg/ml
<b>Storage Stability :</b>	-15°C to -25°C/1 year(Do not lower than -25°C)

**Observed Band :** 26kD

**Background :** The protein encoded by this gene is a member of the transmembrane 4 superfamily, also known as the tetraspanin family. Most of these members are cell-surface proteins that are characterized by the presence of four hydrophobic domains. The proteins mediate signal transduction events that play a role in the regulation of cell development, activation, growth and motility. This encoded protein is a cell surface glycoprotein that is known to complex with integrins. This gene is expressed in different carcinomas. The use of alternate polyadenylation sites has been found for this gene. [provided by RefSeq, Jul 2008],

**Function :** similarity:Belongs to the tetraspanin (TM4SF) family.,tissue specificity:Gastric, colon, rectal, and pancreatic carcinomas.,

**Subcellular Location :** Membrane; Multi-pass membrane protein.

**Expression :** Gastric, colon, rectal, and pancreatic carcinomas.

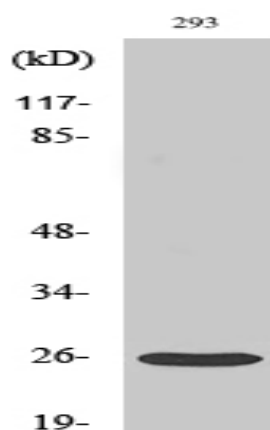
**Sort :** 17050

**No4 :** 1

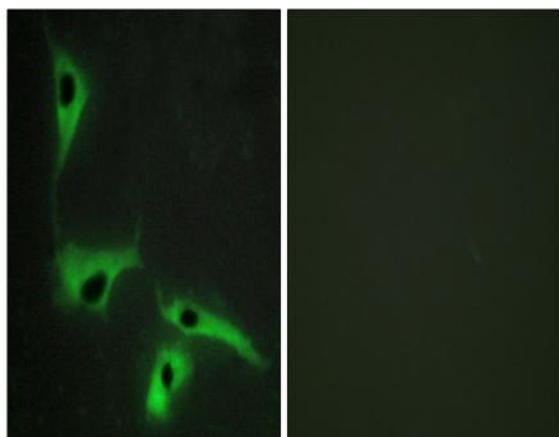
**Host :** Rabbit

**Modifications :** Unmodified

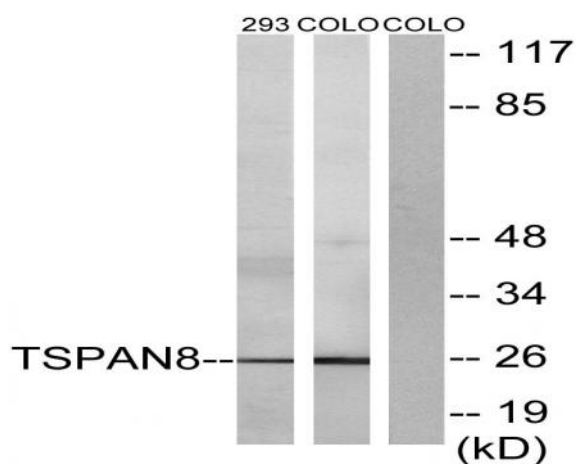
## Products Images



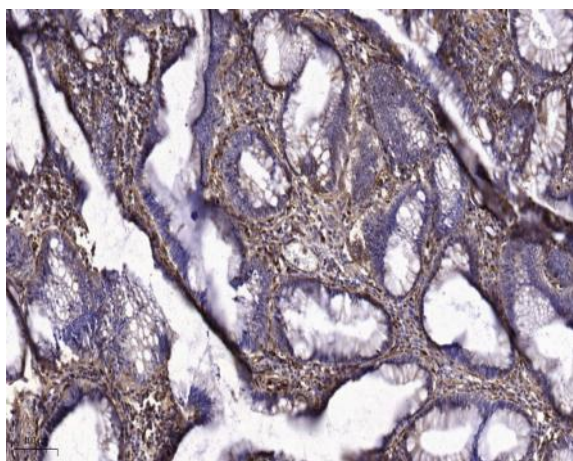
Western Blot analysis of various cells using Tetraspanin-8 Polyclonal Antibody diluted at 1:1000



Immunofluorescence analysis of HeLa cells, using TSPAN8 Antibody. The picture on the right is blocked with the synthesized peptide.



Western blot analysis of lysates from 293 and COLO cells, using TSPAN8 Antibody. The lane on the right is blocked with the synthesized peptide.



Immunohistochemical analysis of paraffin-embedded human colon cancer. 1, Tris-EDTA, pH 9.0 was used for antigen retrieval. 2 Antibody was diluted at 1:200 (4° overnight). 3, Secondary antibody was diluted at 1:200 (room temperature, 45 min).