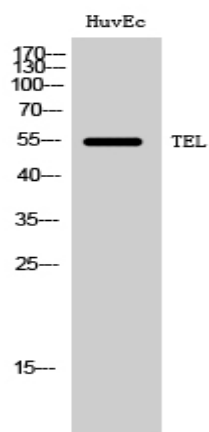


TEL Polyclonal Antibody

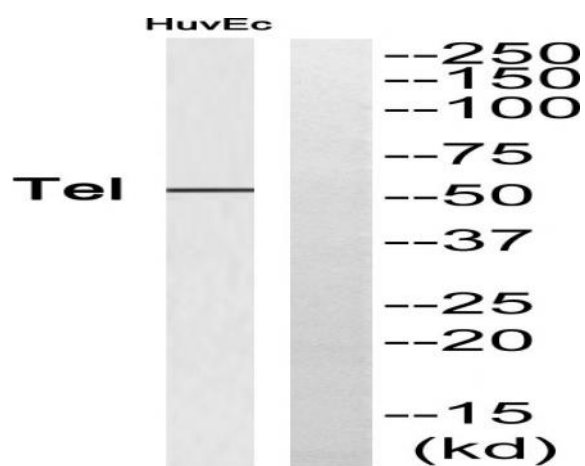
Catalog No :	YT4600
Reactivity :	Human;Rat;Mouse;
Applications :	WB;ELISA
Target :	TEL
Fields :	>>Transcriptional misregulation in cancer
Gene Name :	ETV6
Protein Name :	Transcription factor ETV6
Human Gene Id :	2120
Human Swiss Prot No :	P41212
Mouse Swiss Prot No :	P97360
Immunogen :	The antiserum was produced against synthesized peptide derived from human Tel. AA range:223-272
Specificity :	TEL Polyclonal Antibody detects endogenous levels of TEL protein.
Formulation :	Liquid in PBS containing 50% glycerol, 0.5% BSA and 0.02% sodium azide.
Source :	Polyclonal, Rabbit,IgG
Dilution :	WB 1:500 - 1:2000. ELISA: 1:10000. Not yet tested in other applications.
Purification :	The antibody was affinity-purified from rabbit antiserum by affinity-chromatography using epitope-specific immunogen.
Concentration :	1 mg/ml
Storage Stability :	-15°C to -25°C/1 year(Do not lower than -25°C)

Observed Band :	55kD
Cell Pathway :	Dorso-ventral axis formation;
Background :	<p>This gene encodes an ETS family transcription factor. The product of this gene contains two functional domains: a N-terminal pointed (PNT) domain that is involved in protein-protein interactions with itself and other proteins, and a C-terminal DNA-binding domain. Gene knockout studies in mice suggest that it is required for hematopoiesis and maintenance of the developing vascular network. This gene is known to be involved in a large number of chromosomal rearrangements associated with leukemia and congenital fibrosarcoma. [provided by RefSeq, Sep 2008],</p>
Function :	<p>disease:A chromosomal aberration involving ETV6 is a cause in many instances of chronic myeloproliferative disorder with eosinophilia (MPE) [MIM:131440]. Translocation t(5;12) with PDGFRB on chromosome 5 creating an ETV6-PDGFRB fusion protein.,disease:A chromosomal aberration involving ETV6 is a cause of acute lymphoblastic leukemia. Translocation t(9;12)(p13;p13) with PAX5.,disease:A chromosomal aberration involving ETV6 is a cause of myelodysplastic syndrome (MDS). Translocation t(1;12)(p36.1;p13) with MDS2.,disease:A chromosomal aberration involving ETV6 is found in a form of chronic myelomonocytic leukemia (CMML). Translocation t(5;12)(q33;p13) with PDGFRB. It is characterized by abnormal clonal myeloid proliferation and by progression to acute myelogenous leukemia (AML).,disease:A chromosomal aberration involving ETV6 is found in a form of pre-B acute myeloid leukemia. Translocation</p>
Subcellular Location :	Nucleus.
Expression :	Ubiquitous.
Sort :	17030
Host :	Rabbit
Modifications :	Unmodified

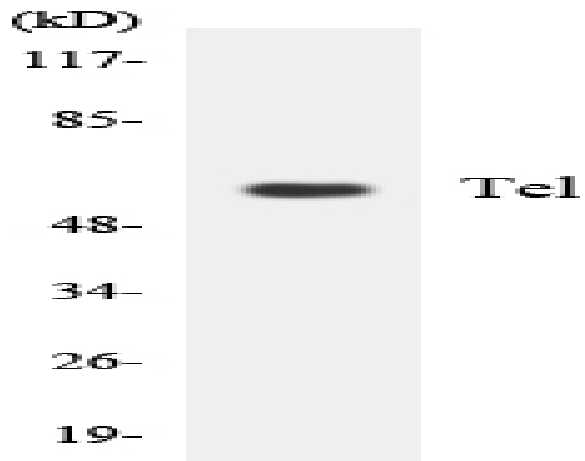
Products Images



Western Blot analysis of HuvEc cells using TEL Polyclonal Antibody



Western blot analysis of Tel Antibody. The lane on the right is blocked with the Tel peptide.



Western blot analysis of the lysates from HeLa cells using Tel antibody.