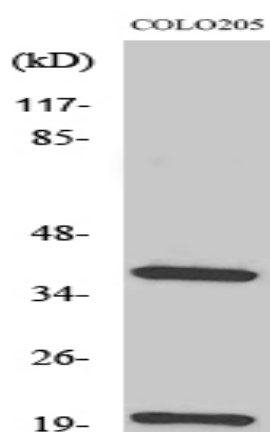


## TCR $\beta$ Polyclonal Antibody

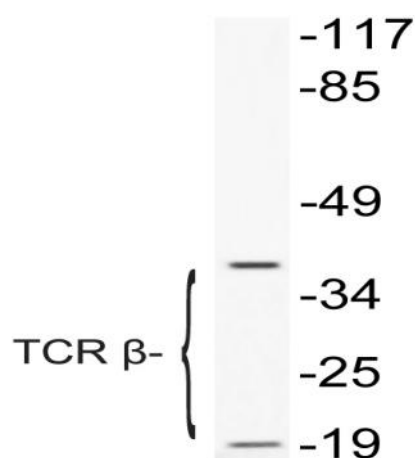
<b>Catalog No :</b>	YT4588
<b>Reactivity :</b>	Human;Rat;Mouse;
<b>Applications :</b>	WB;ELISA
<b>Target :</b>	TCR $\beta$
<b>Gene Name :</b>	TRBC1
<b>Protein Name :</b>	T-cell receptor beta-1 chain C region
<b>Human Gene Id :</b>	28639
<b>Human Swiss Prot No :</b>	P01850
<b>Immunogen :</b>	The antiserum was produced against synthesized peptide derived from human TCR beta. AA range:66-115
<b>Specificity :</b>	TCR $\beta$ Polyclonal Antibody detects endogenous levels of TCR $\beta$ protein.
<b>Formulation :</b>	Liquid in PBS containing 50% glycerol, 0.5% BSA and 0.02% sodium azide.
<b>Source :</b>	Polyclonal, Rabbit,IgG
<b>Dilution :</b>	WB 1:500 - 1:2000. ELISA: 1:10000. Not yet tested in other applications.
<b>Purification :</b>	The antibody was affinity-purified from rabbit antiserum by affinity-chromatography using epitope-specific immunogen.
<b>Concentration :</b>	1 mg/ml
<b>Storage Stability :</b>	-15°C to -25°C/1 year(Do not lower than -25°C)
<b>Observed Band :</b>	20kD
<b>Background :</b>	similarity:Contains 1 Ig-like (immunoglobulin-like) domain.,

<b>Function :</b>	similarity:Contains 1 Ig-like (immunoglobulin-like) domain.,
<b>Subcellular Location :</b>	Cell membrane .
<b>Expression :</b>	Lymph node: intermediate region,
<b>Tag :</b>	orthogonal
<b>Sort :</b>	17012
<b>No4 :</b>	1
<b>Host :</b>	Rabbit
<b>Modifications :</b>	Unmodified

## Products Images



Western Blot analysis of various cells using TCR  $\beta$  Polyclonal Antibody



Western blot analysis of lysate from COLO205 cells treated with Forskolin, using TCR  $\beta$  antibody.