

SPT16 Polyclonal Antibody

Catalog No :	YT4388
Reactivity :	Human;Mouse
Applications :	WB;IHC;IF;ELISA
Target :	SPT16
Gene Name :	SUPT16H
Protein Name :	FACT complex subunit SPT16
Human Gene Id :	11198
Human Swiss Prot No :	Q9Y5B9
Mouse Gene Id :	114741
Mouse Swiss Prot No :	Q920B9
Immunogen :	The antiserum was produced against synthesized peptide derived from human SUPT16H. AA range:941-990
Specificity :	SPT16 Polyclonal Antibody detects endogenous levels of SPT16 protein.
Formulation :	Liquid in PBS containing 50% glycerol, 0.5% BSA and 0.02% sodium azide.
Source :	Polyclonal, Rabbit,IgG
Dilution :	WB 1:500 - 1:2000. IHC 1:100 - 1:300. ELISA: 1:10000.. IF 1:50-200
Purification :	The antibody was affinity-purified from rabbit antiserum by affinity-chromatography using epitope-specific immunogen.
Concentration :	1 mg/ml
Storage Stability :	-15°C to -25°C/1 year(Do not lower than -25°C)

Observed Band : 119kD

Background : Transcription of protein-coding genes can be reconstituted on naked DNA with only the general transcription factors and RNA polymerase II. However, this minimal system cannot transcribe DNA packaged into chromatin, indicating that accessory factors may facilitate access to DNA. One such factor, FACT (facilitates chromatin transcription), interacts specifically with histones H2A/H2B to effect nucleosome disassembly and transcription elongation. FACT is composed of an 80 kDa subunit and a 140 kDa subunit; this gene encodes the 140 kDa subunit. [provided by RefSeq, Feb 2009],

Function : caution:Although related to the peptidase M24 family, this protein lacks conserved active site residues suggesting that it may lack peptidase activity.,domain:The Glu-rich acidic region in C-terminus is essential for FACT activity.,function:Component of the FACT complex, a general chromatin factor that acts to reorganize nucleosomes. The FACT complex is involved in multiple processes that require DNA as a template such as mRNA elongation, DNA replication and DNA repair. During transcription elongation the FACT complex acts as a histone chaperone that both destabilizes and restores nucleosomal structure. It facilitates the passage of RNA polymerase II and transcription by promoting the dissociation of one histone H2A-H2B dimer from the nucleosome, then subsequently promotes the reestablishment of the nucleosome following the passage of RNA polymerase II. The FACT complex is probably also

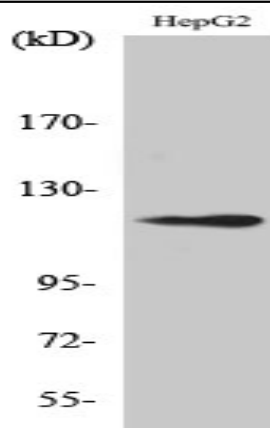
Subcellular Location : Nucleus . Chromosome . Colocalizes with RNA polymerase II on chromatin. Recruited to actively transcribed loci.

Expression : Ubiquitous.

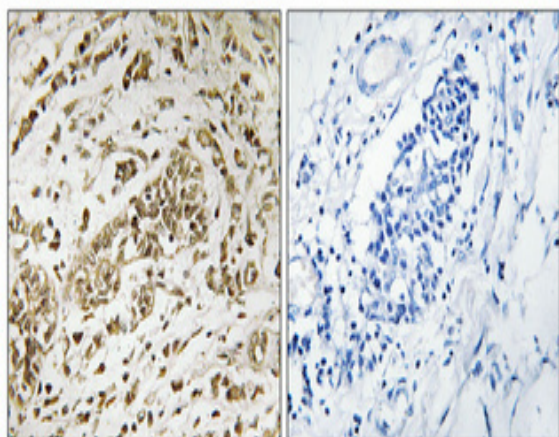
Sort : 16562

No4 : 1

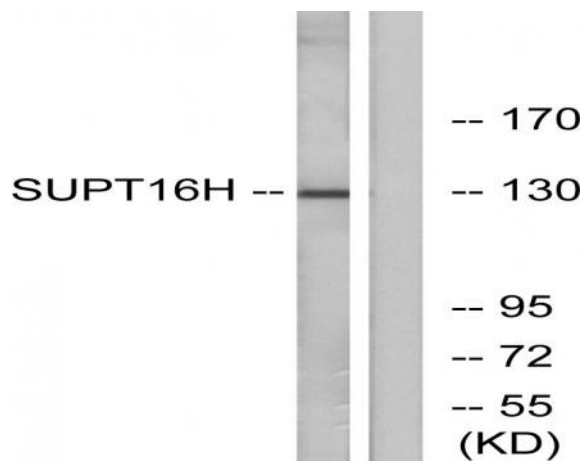
Products Images



Western Blot analysis of various cells using SPT16 Polyclonal Antibody cells nucleus extracted by Minute TM Cytoplasmic and Nuclear Fractionation kit (SC-003, Inventbiotech, MN, USA).



Immunohistochemical analysis of paraffin-embedded Human breast cancer. Antibody was diluted at 1:100 (4° overnight). High-pressure and temperature Tris-EDTA, pH 8.0 was used for antigen retrieval. Negative control (right) obtained from antibody was pre-absorbed by immunogen peptide.



Western blot analysis of lysates from HepG2 and Jurkat cells, using SUPT16H Antibody. The lane on the right is blocked with the synthesized peptide.