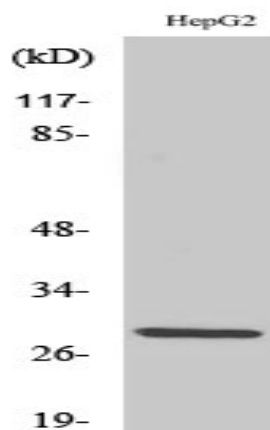


## Spi-C Polyclonal Antibody

<b>Catalog No :</b>	YT4384
<b>Reactivity :</b>	Human;Rat;Mouse;
<b>Applications :</b>	WB;ELISA;IHC
<b>Target :</b>	Spi-C
<b>Gene Name :</b>	SPIC
<b>Protein Name :</b>	Transcription factor Spi-C
<b>Human Gene Id :</b>	121599
<b>Human Swiss Prot No :</b>	Q8N5J4
<b>Mouse Swiss Prot No :</b>	Q6P3D7
<b>Immunogen :</b>	The antiserum was produced against synthesized peptide derived from human SPIC. AA range:131-180
<b>Specificity :</b>	Spi-C Polyclonal Antibody detects endogenous levels of Spi-C protein.
<b>Formulation :</b>	Liquid in PBS containing 50% glycerol, 0.5% BSA and 0.02% sodium azide.
<b>Source :</b>	Polyclonal, Rabbit,IgG
<b>Dilution :</b>	WB 1:500-2000;IHC 1:50-300; ELISA 2000-20000
<b>Purification :</b>	The antibody was affinity-purified from rabbit antiserum by affinity-chromatography using epitope-specific immunogen.
<b>Concentration :</b>	1 mg/ml
<b>Storage Stability :</b>	-15°C to -25°C/1 year(Do not lower than -25°C)
<b>Observed Band :</b>	29kD

<b>Background :</b>	The protein encoded by this gene regulates the development of red pulp macrophages, which are necessary for iron homeostasis and the recycling of red blood cells. [provided by RefSeq, Aug 2016],
<b>Function :</b>	function:Probable transcription factor that binds to the PU-box, a purine-rich DNA sequence (5'-GAGGA[AT]-3') that can act as a lymphoid-specific enhancer.,similarity:Belongs to the ETS family.,similarity:Contains 1 ETS DNA-binding domain.,subunit:Binds DNA as a monomer.,tissue specificity:Preferentially detected in fetal and adult spleen, lymph nodes and at lower levels in bone marrow and fetal liver.,
<b>Subcellular Location :</b>	Nucleus .
<b>Expression :</b>	Preferentially detected in fetal and adult spleen, lymph nodes and at lower levels in bone marrow and fetal liver.
<b>Sort :</b>	16550
<b>No4 :</b>	1

## Products Images



Western Blot analysis of various cells using Spi-C Polyclonal Antibody cells nucleus extracted by Minute TM Cytoplasmic and Nuclear Fractionation kit (SC-003, Invent biotech, MN, USA).

