

Six3/6 Polyclonal Antibody

Catalog No :	YT4307
Reactivity :	Human;Mouse;Rat
Applications :	WB;ELISA;IHC
Target :	Six3/6
Gene Name :	SIX6
Protein Name :	Homeobox protein SIX6
Human Gene Id :	4990
Human Swiss Prot No :	O95475
Mouse Gene Id :	20476
Mouse Swiss Prot No :	Q9QZ28
Immunogen :	The antiserum was produced against synthesized peptide derived from human SIX6. AA range:121-170
Specificity :	Six3/6 Polyclonal Antibody detects endogenous levels of Six3/6 protein.
Formulation :	Liquid in PBS containing 50% glycerol, 0.5% BSA and 0.02% sodium azide.
Source :	Polyclonal, Rabbit,IgG
Dilution :	WB 1:500-2000;IHC 1:50-300; ELISA 2000-20000
Purification :	The antibody was affinity-purified from rabbit antiserum by affinity-chromatography using epitope-specific immunogen.
Concentration :	1 mg/ml
Storage Stability :	-15°C to -25°C/1 year(Do not lower than -25°C)

Observed Band : 28kD

Background : The protein encoded by this gene is a homeobox protein that is similar to the Drosophila *sine oculis* gene product. This gene is found in a cluster of related genes on chromosome 14 and is thought to be involved in eye development. Defects in this gene are a cause of isolated microphthalmia with cataract type 2 (MCOPCT2). [provided by RefSeq, Jul 2008],

Function : disease:Defects in SIX6 are the cause of microphthalmia isolated with cataract type 2 (MCOPCT2) [MIM:212550]. Microphthalmia is a clinically heterogeneous disorder of eye formation, ranging from small size of a single eye to complete bilateral absence of ocular tissues. Ocular abnormalities like opacities of the cornea and lens, scarring of the retina and choroid, cataract and other abnormalities like cataract may also be present.,function:May be involved in eye development.,similarity:Belongs to the SIX/Sine oculis homeobox family.,similarity:Contains 1 homeobox DNA-binding domain.,tissue specificity:Expressed in the developing and adult retina. Also expressed in the hypothalamic and the pituitary regions.,

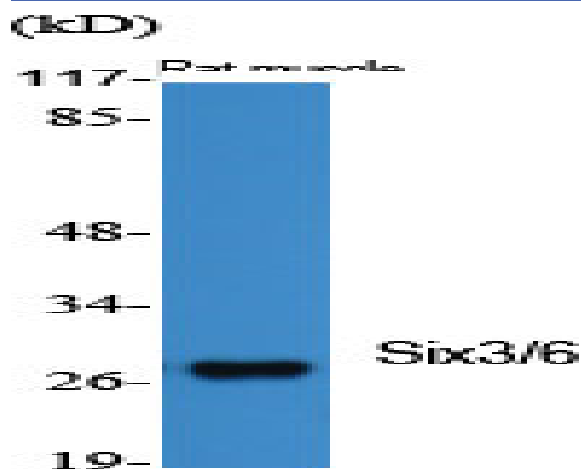
Subcellular Location : Nucleus .

Expression : Expressed in the developing and adult retina. Also expressed in the hypothalamic and the pituitary regions.

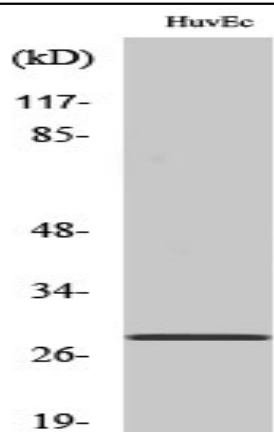
Sort : 16352

No4 : 1

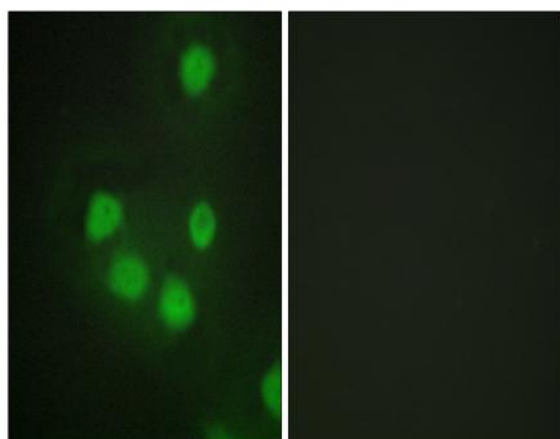
Products Images



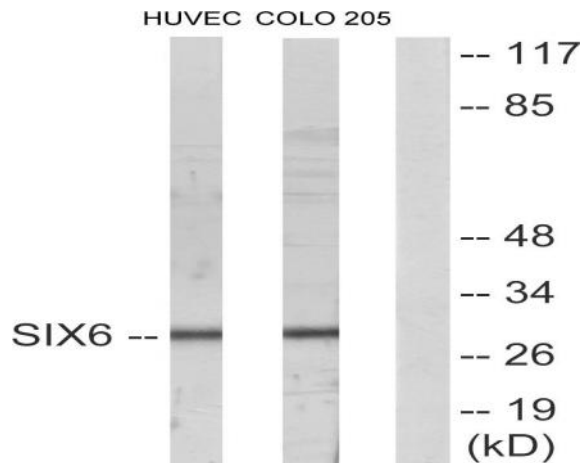
Western Blot analysis of various cells using Six3/6 Polyclonal Antibody cells nucleus extracted by Minute TM Cytoplasmic and Nuclear Fractionation kit (SC-003, Invent biotech, MN, USA).



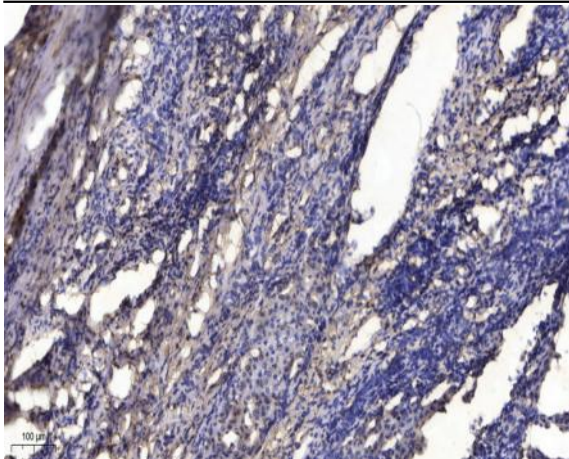
Western Blot analysis of COLO205 cells using Six3/6 Polyclonal Antibody cells nucleus extracted by Minute TM Cytoplasmic and Nuclear Fractionation kit (SC-003, Inventbiotech, MN, USA).



Immunofluorescence analysis of HepG2 cells, using SIX6 Antibody. The picture on the right is blocked with the synthesized peptide.



Western blot analysis of lysates from HUVEC and COLO205 cells, using SIX6 Antibody. The lane on the right is blocked with the synthesized peptide.



Immunohistochemical analysis of paraffin-embedded human liver cancer. 1, Antibody was diluted at 1:200(4° overnight). 2, Tris-EDTA,pH9.0 was used for antigen retrieval. 3,Secondary antibody was diluted at 1:200(room temperature, 45min).