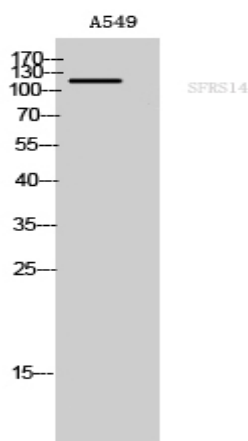


SFRS14 Polyclonal Antibody

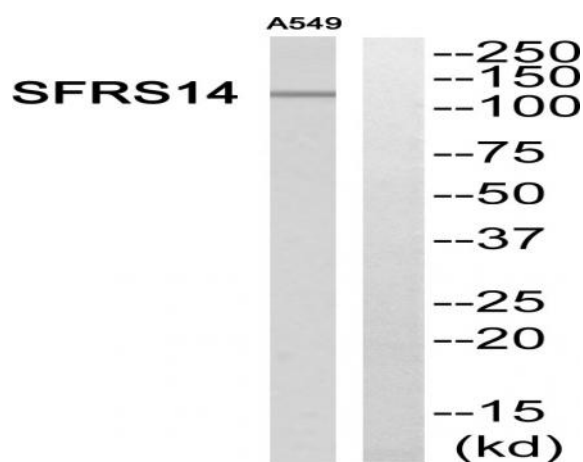
| | |
|------------------------------|---|
| Catalog No : | YT4264 |
| Reactivity : | Human;Rat;Mouse; |
| Applications : | WB;ELISA;IHC |
| Target : | SFRS14 |
| Gene Name : | SUGP2 |
| Protein Name : | SURP and G-patch domain-containing protein 2 |
| Human Gene Id : | 10147 |
| Human Swiss Prot No : | Q8IX01 |
| Mouse Swiss Prot No : | Q8CH09 |
| Immunogen : | Synthesized peptide derived from SFRS14 . at AA range: 260-340 |
| Specificity : | SFRS14 Polyclonal Antibody detects endogenous levels of SFRS14 protein. |
| Formulation : | Liquid in PBS containing 50% glycerol, 0.5% BSA and 0.02% sodium azide. |
| Source : | Polyclonal, Rabbit,IgG |
| Dilution : | WB 1:500-2000;IHC 1:50-300; ELISA 2000-20000 |
| Purification : | The antibody was affinity-purified from rabbit antiserum by affinity-chromatography using epitope-specific immunogen. |
| Concentration : | 1 mg/ml |
| Storage Stability : | -15°C to -25°C/1 year(Do not lower than -25°C) |
| Observed Band : | 120kD |

| | |
|-------------------------------|--|
| Background : | This gene encodes a member of the arginine/serine-rich family of splicing factors. The encoded protein functions in mRNA processing. Alternatively spliced transcript variants have been described. [provided by RefSeq, Feb 2009], |
| Function : | function:May play a role in mRNA splicing .,PTM:Phosphorylated upon DNA damage, probably by ATM or ATR.,similarity:Contains 1 G-patch domain.,similarity:Contains 2 SURP motif repeats.,tissue specificity:Detected in adult testis, and in fetal brain and kidney., |
| Subcellular Location : | Nucleus . |
| Expression : | Detected in adult testis, and in fetal brain and kidney. |
| Sort : | 16261 |
| No4 : | 1 |

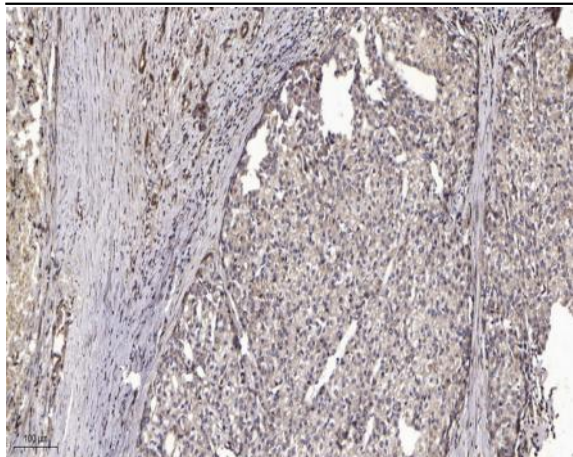
Products Images



Western Blot analysis of A549 cells using SFRS14 Polyclonal Antibody cells nucleus extracted by Minute TM Cytoplasmic and Nuclear Fractionation kit (SC-003, Invent biotech, MN, USA).



Western blot analysis of SFRS14 Antibody. The lane on the right is blocked with the SFRS14 peptide.



Immunohistochemical analysis of paraffin-embedded human liver cancer. 1, Antibody was diluted at 1:200(4° overnight). 2, Tris-EDTA,pH9.0 was used for antigen retrieval. 3,Secondary antibody was diluted at 1:200(room temperature, 45min).