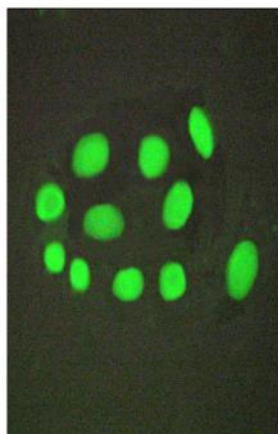


SPZ1 Polyclonal Antibody

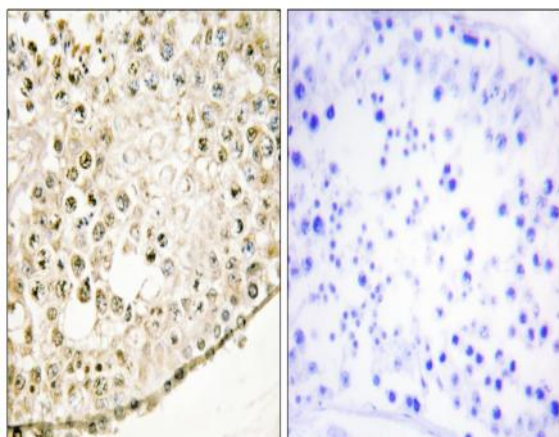
Catalog No :	YT4390
Reactivity :	Human;Rat;Mouse;
Applications :	IHC;IF;WB;ELISA
Target :	SPZ1
Gene Name :	SPZ1
Protein Name :	Spermatogenic leucine zipper protein 1
Human Gene Id :	84654
Human Swiss Prot No :	Q9BXG8
Mouse Swiss Prot No :	Q99MY0
Immunogen :	The antiserum was produced against synthesized peptide derived from human SPZ1. AA range:111-160
Specificity :	SPZ1 Polyclonal Antibody detects endogenous levels of SPZ1 protein.
Formulation :	Liquid in PBS containing 50% glycerol, 0.5% BSA and 0.02% sodium azide.
Source :	Polyclonal, Rabbit,IgG
Dilution :	WB 1:500-2000 IHC 1:100 - 1:300. IF 1:200 - 1:1000. ELISA: 1:20000. Not yet tested in other applications.
Purification :	The antibody was affinity-purified from rabbit antiserum by affinity-chromatography using epitope-specific immunogen.
Concentration :	1 mg/ml
Storage Stability :	-15°C to -25°C/1 year(Do not lower than -25°C)
Observed Band :	133kD

Background :	This gene encodes a bHLH-zip transcription factor which functions in the mitogen-activate protein kinase (MAPK) signaling pathway. Because of its role in the upregulation of cell proliferation and tumorigenesis, this gene may serve as a target for Ras-induced tumor treatments. [provided by RefSeq, Oct 2011],
Function :	function:Transcription factor that binds to the DNA sequence 5'-CANNTG-3'(E box) and the G-box motif. May play an important role in the regulation of cell proliferation and differentiation during spermatogenesis.,PTM:Phosphorylated by ERK1 and ERK2.,similarity:Contains 1 basic helix-loop-helix (bHLH) domain.,subunit:Interacts with PPP1CC isoform gamma-2.,tissue specificity:Specifically and strongly expressed in the testis. Expressed in several tumor cell lines.,
Subcellular Location :	Cytoplasm . Nucleus .
Expression :	Specifically and strongly expressed in the testis. Expressed in several tumor cell lines.
Sort :	16568
No4 :	1
Host :	Rabbit
Modifications :	Unmodified

Products Images



Immunofluorescence analysis of A549 cells, using SPZ1 Antibody. The picture on the right is blocked with the synthesized peptide.



Immunohistochemistry analysis of paraffin-embedded human testis tissue, using SPZ1 Antibody. The picture on the right is blocked with the synthesized peptide.