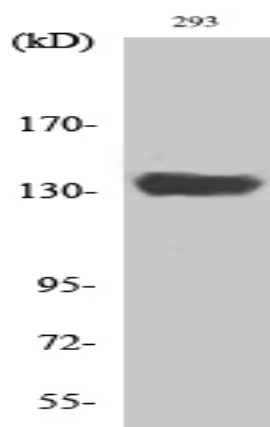


SCAF1 Polyclonal Antibody

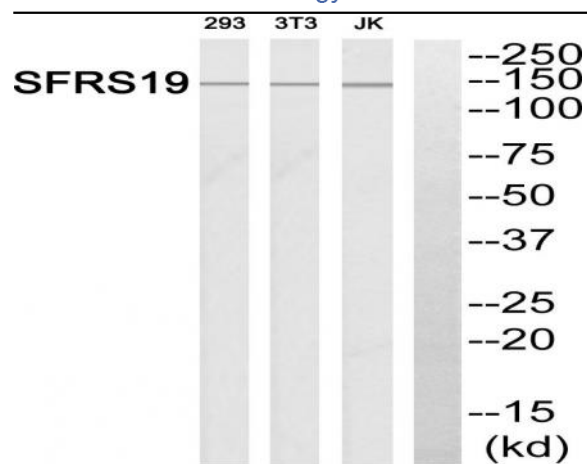
Catalog No :	YT4217
Reactivity :	Human;Mouse
Applications :	WB;IHC
Target :	SCAF1
Gene Name :	SCAF1
Protein Name :	Splicing factor arginine/serine-rich 19
Human Gene Id :	58506
Human Swiss Prot No :	Q9H7N4
Mouse Gene Id :	233208
Mouse Swiss Prot No :	Q5U4C3
Immunogen :	The antiserum was produced against synthesized peptide derived from human SFRS19. AA range:41-90
Specificity :	SCAF1 Polyclonal Antibody detects endogenous levels of SCAF1 protein.
Formulation :	Liquid in PBS containing 50% glycerol, 0.5% BSA and 0.02% sodium azide.
Source :	Polyclonal, Rabbit,IgG
Dilution :	WB 1:500-2000;IHC 1:50-300
Purification :	The antibody was affinity-purified from rabbit antiserum by affinity-chromatography using epitope-specific immunogen.
Concentration :	1 mg/ml
Storage Stability :	-15°C to -25°C/1 year(Do not lower than -25°C)

Observed Band :	140kD
Background :	function:May function in pre-mRNA splicing.,induction:Up-regulated by estrogens, androgens and glucocorticoids.,similarity:Belongs to the splicing factor SR family.,subunit:Interacts with POLR2A.,tissue specificity:Ubiquitous. Highly expressed in fetal brain and liver, poorly expressed in salivary gland, heart, skin and ovary. Expressed in colorectal carcinomas and ovarian cancers. <u>Overexpressed in colorectal carcinomas as compared to normal colonic mucosa.,</u>
Function :	function:May function in pre-mRNA splicing.,induction:Up-regulated by estrogens, androgens and glucocorticoids.,similarity:Belongs to the splicing factor SR family.,subunit:Interacts with POLR2A.,tissue specificity:Ubiquitous. Highly expressed in fetal brain and liver, poorly expressed in salivary gland, heart, skin and ovary. Expressed in colorectal carcinomas and ovarian cancers. <u>Overexpressed in colorectal carcinomas as compared to normal colonic mucosa.,</u>
Subcellular Location :	Nucleus .
Expression :	Ubiquitous. Highly expressed in fetal brain and liver, poorly expressed in salivary gland, heart, skin and ovary. Expressed in colorectal carcinomas and ovarian cancers. Overexpressed in colorectal carcinomas as compared to normal colonic mucosa.
Sort :	16168
No4 :	1

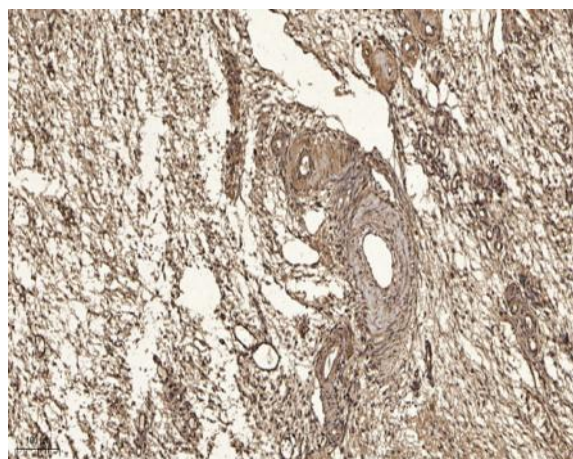
Products Images



Western Blot analysis of various cells using SCAF1 Polyclonal Antibody diluted at 1:2000 cells nucleus extracted by Minute TM Cytoplasmic and Nuclear Fractionation kit (SC-003, Inventbiotech, MN, USA).



Western blot analysis of SFRS19 Antibody. The lane on the right is blocked with the SFRS19 peptide.



Immunohistochemical analysis of paraffin-embedded human oophoroma. 1, Antibody was diluted at 1:200(4° overnight). 2, Tris-EDTA,pH9.0 was used for antigen retrieval. 3,Secondary antibody was diluted at 1:200(room temperature, 45min).