

Spectrin β V Polyclonal Antibody

Catalog No :	YT4382
Reactivity :	Human;Rat;Mouse;
Applications :	IHC;IF;ELISA
Target :	Spectrin β V
Gene Name :	SPTBN5
Protein Name :	Spectrin beta chain non-erythrocytic 5
Human Gene Id :	51332
Human Swiss Prot No :	Q9NRC6
Immunogen :	The antiserum was produced against synthesized peptide derived from human SPTBN5. AA range:481-530
Specificity :	Spectrin β V Polyclonal Antibody detects endogenous levels of Spectrin β V protein.
Formulation :	Liquid in PBS containing 50% glycerol, 0.5% BSA and 0.02% sodium azide.
Source :	Polyclonal, Rabbit,IgG
Dilution :	IHC 1:100 - 1:300. ELISA: 1:40000.. IF 1:50-200
Purification :	The antibody was affinity-purified from rabbit antiserum by affinity-chromatography using epitope-specific immunogen.
Concentration :	1 mg/ml
Storage Stability :	-15°C to -25°C/1 year(Do not lower than -25°C)
Molecularweight :	417kD
Background :	similarity:Belongs to the spectrin family.,similarity:Contains 1 PH

domain.,similarity:Contains 2 CH (calponin-homology)
domains.,similarity:Contains 31 spectrin repeats.,subcellular location:Detected prominently in the outer segments of photoreceptor rods and cones and in the basolateral membrane and cytosol of gastric epithelial cells.,subunit:Probably associates with an alpha chain.,tissue specificity:Expressed at very low levels in many tissues, with strongest expression in cerebellum, spinal cord, stomach, pituitary gland, liver, pancreas, salivary gland, kidney, bladder, and heart.,

Function :

similarity:Belongs to the spectrin family.,similarity:Contains 1 PH
domain.,similarity:Contains 2 CH (calponin-homology)
domains.,similarity:Contains 31 spectrin repeats.,subcellular location:Detected prominently in the outer segments of photoreceptor rods and cones and in the basolateral membrane and cytosol of gastric epithelial cells.,subunit:Probably associates with an alpha chain.,tissue specificity:Expressed at very low levels in many tissues, with strongest expression in cerebellum, spinal cord, stomach, pituitary gland, liver, pancreas, salivary gland, kidney, bladder, and heart.,

Subcellular Location :

Cytoplasm, cytoskeleton. Detected prominently in the outer segments of photoreceptor rods and cones and in the basolateral membrane and cytosol of gastric epithelial cells.

Expression :

Expressed at very low levels in many tissues, with strongest expression in cerebellum, spinal cord, stomach, pituitary gland, liver, pancreas, salivary gland, kidney, bladder, and heart.

Sort :

16546

No4 :

1

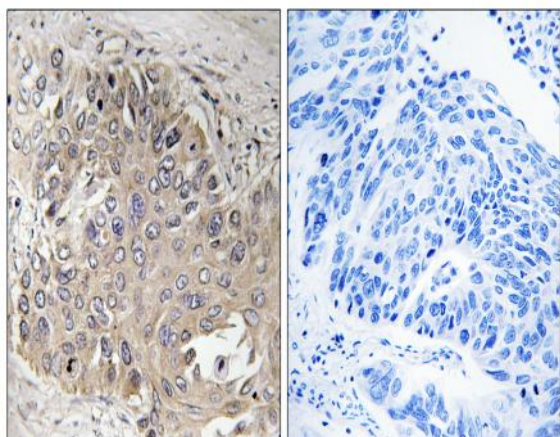
Host :

Rabbit

Modifications :

Unmodified

Products Images



Immunohistochemistry analysis of paraffin-embedded human lung carcinoma, using SPTBN5 Antibody. The picture on the right is blocked with the synthesized peptide.