

SMF Polyclonal Antibody

Catalog No :	YT4341
Reactivity :	Human;Rat;Mouse;
Applications :	IHC;IF;ELISA
Target :	SMF
Gene Name :	HMGXB3
Protein Name :	HMG domain-containing protein 3
Human Gene Id :	22993
Human Swiss Prot No :	Q12766
Immunogen :	The antiserum was produced against synthesized peptide derived from human HMGXB3. AA range:131-180
Specificity :	SMF Polyclonal Antibody detects endogenous levels of SMF protein.
Formulation :	Liquid in PBS containing 50% glycerol, 0.5% BSA and 0.02% sodium azide.
Source :	Polyclonal, Rabbit,IgG
Dilution :	IHC 1:100 - 1:300. ELISA: 1:20000.. IF 1:50-200
Purification :	The antibody was affinity-purified from rabbit antiserum by affinity-chromatography using epitope-specific immunogen.
Concentration :	1 mg/ml
Storage Stability :	-15°C to -25°C/1 year(Do not lower than -25°C)
Molecularweight :	168kD
Background :	This gene is one of the non-canonical high mobility group (HMG) genes. The encoded protein contains an HMG-box domain found in DNA binding proteins

such as transcription factors and chromosomal proteins. [provided by RefSeq, Aug 2011],

Function :

similarity:Contains 1 HMG box DNA-binding domain.,

Subcellular Location :

Nucleus .

Expression :

Bone marrow,Brain,Liver,Lymph,Muscle,Placenta,

Sort :

16444

No4 :

1

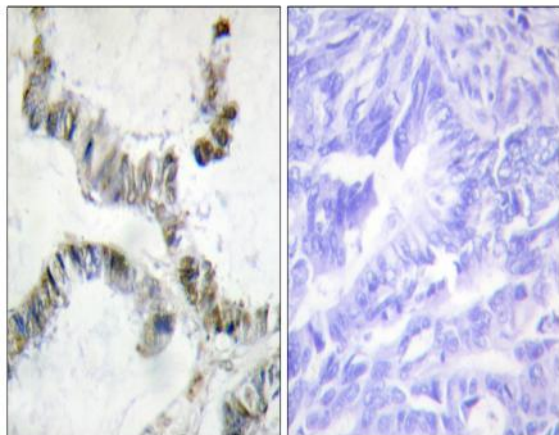
Host :

Rabbit

Modifications :

Unmodified

Products Images



Immunohistochemistry analysis of paraffin-embedded human colon carcinoma, using SMF Antibody. The picture on the right is blocked with the synthesized peptide.