

Skp1 p19 Polyclonal Antibody

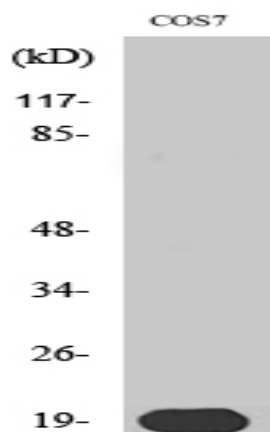
Catalog No :	YT4310
Reactivity :	Human;Mouse;Rat;Monkey
Applications :	WB;IHC;IF;ELISA
Target :	Skp1 p19
Fields :	>>Cell cycle;>>Oocyte meiosis;>>Ubiquitin mediated proteolysis;>>Protein processing in endoplasmic reticulum;>>Wnt signaling pathway;>>TGF-beta signaling pathway;>>Circadian rhythm;>>Shigellosis;>>Salmonella infection;>>Human immunodeficiency virus 1 infection;>>Pathways in cancer
Gene Name :	SKP1
Protein Name :	S-phase kinase-associated protein 1
Human Gene Id :	6500
Human Swiss Prot No :	P63208
Mouse Gene Id :	21402
Mouse Swiss Prot No :	Q9WTX5
Rat Gene Id :	287280
Rat Swiss Prot No :	Q6PEC4
Immunogen :	The antiserum was produced against synthesized peptide derived from human SKP1A/p19. AA range:41-90
Specificity :	Skp1 p19 Polyclonal Antibody detects endogenous levels of Skp1 p19 protein.
Formulation :	Liquid in PBS containing 50% glycerol, 0.5% BSA and 0.02% sodium azide.
Source :	Polyclonal, Rabbit,IgG

Dilution :	WB 1:500 - 1:2000. IHC 1:100 - 1:300. ELISA: 1:5000.. IF 1:50-200
Purification :	The antibody was affinity-purified from rabbit antiserum by affinity-chromatography using epitope-specific immunogen.
Concentration :	1 mg/ml
Storage Stability :	-15 °C to -25 °C/1 year(Do not lower than -25 °C)
Observed Band :	19kD
Cell Pathway :	Cell_Cycle_G1S;Cell_Cycle_G2M_DNA;Oocyte meiosis;Ubiquitin mediated proteolysis;WNT;WNT-T CELLTGF-beta;
Background :	This gene encodes a component of SCF complexes, which are composed of this protein, cullin 1, a ring-box protein, and one member of the F-box family of proteins. This protein binds directly to the F-box motif found in F-box proteins. SCF complexes are involved in the regulated ubiquitination of specific protein substrates, which targets them for degradation by the proteasome. Specific F-box proteins recognize different target protein(s), and many specific SCF substrates have been identified including regulators of cell cycle progression and development. Studies have also characterized the protein as an RNA polymerase II elongation factor. Alternative splicing of this gene results in two transcript variants. A related pseudogene has been identified on chromosome 7. [provided by RefSeq, Jul 2008],
Function :	function:Essential component of the SCF (SKP1-CUL1-F-box protein) ubiquitin ligase complex, which mediates the ubiquitination of proteins involved in cell cycle progression, signal transduction and transcription. In the SCF complex, serves as an adapter that links the F-box protein to CUL1.,pathway:Protein modification; protein ubiquitination.,similarity:Belongs to the SKP1 family.,subunit:Interacts directly with CUL1 and F-box proteins, such as BTRC and SKP2, in the SCF complex. Interacts with the cyclin A/CDK2 complex. Part of a SCF-like complex consisting of CUL7, RBX1, SKP1 and FBXW8. Component of a E3 ubiquitin ligase complex containing UBE2D1, SIAH1, CACYBP/SIP, SKP1, APC and TBL1X.,
Subcellular Location :	nucleus,nucleoplasm,cytoplasm,centrosome,cytosol,SCF ubiquitin ligase complex,Cul7-RING ubiquitin ligase complex,PcG protein complex,extracellular exosome,
Expression :	Erythrocyte,Inner ear,Lung,Skin,Uterus,
Sort :	16356
No4 :	1

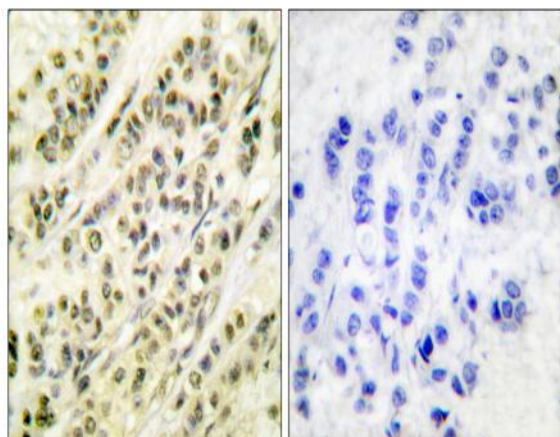
Host : Rabbit

Modifications : Unmodified

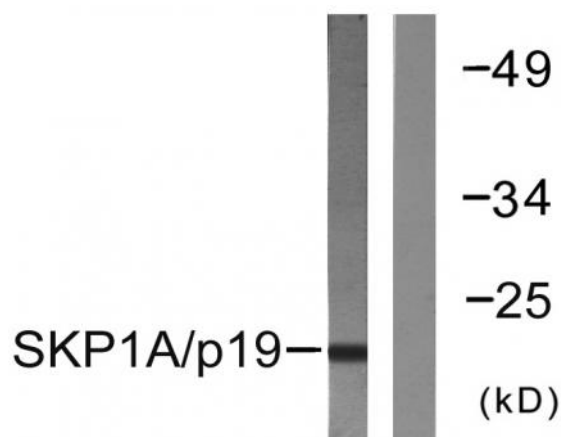
Products Images



Western Blot analysis of various cells using Skp1 p19 Polyclonal Antibody



Immunohistochemistry analysis of paraffin-embedded human breast carcinoma tissue, using SKP1A/p19 Antibody. The picture on the right is blocked with the synthesized peptide.



Western blot analysis of lysates from COS7 cells, using SKP1A/p19 Antibody. The lane on the right is blocked with the synthesized peptide.