

Ribosomal Protein S6 Polyclonal Antibody

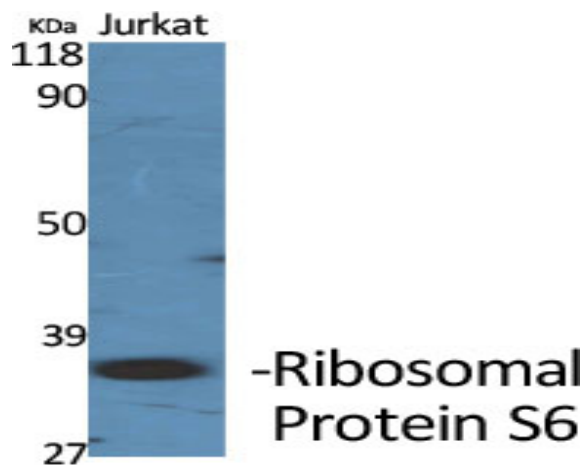
Catalog No :	YT4139
Reactivity :	Human;Mouse;Rat
Applications :	WB;IHC;IF;ELISA
Target :	Ribosomal Protein S6
Fields :	>>EGFR tyrosine kinase inhibitor resistance;>>Ribosome;>>HIF-1 signaling pathway;>>mTOR signaling pathway;>>PI3K-Akt signaling pathway;>>Apelin signaling pathway;>>Thermogenesis;>>Insulin signaling pathway;>>Coronavirus disease - COVID-19;>>Proteoglycans in cancer
Gene Name :	RPS6
Protein Name :	40S ribosomal protein S6
Human Gene Id :	6194
Human Swiss Prot No :	P62753
Mouse Gene Id :	20104
Mouse Swiss Prot No :	P62754
Rat Gene Id :	1.00911e+008
Rat Swiss Prot No :	P62755
Immunogen :	The antiserum was produced against synthesized peptide derived from human S6 Ribosomal Protein. AA range:191-240
Specificity :	Ribosomal Protein S6 Polyclonal Antibody detects endogenous levels of Ribosomal Protein S6 protein.
Formulation :	Liquid in PBS containing 50% glycerol, 0.5% BSA and 0.02% sodium azide.
Source :	Polyclonal, Rabbit,IgG

Dilution :	WB 1:500 - 1:2000. IHC 1:100 - 1:300. IF 1:200 - 1:1000. ELISA: 1:5000. Not yet tested in other applications.
Purification :	The antibody was affinity-purified from rabbit antiserum by affinity-chromatography using epitope-specific immunogen.
Concentration :	1 mg/ml
Storage Stability :	-15°C to -25°C/1 year(Do not lower than -25°C)
Observed Band :	28kD
Cell Pathway :	Ribosome;mTOR;Insulin_Receptor;
Background :	Ribosomes, the organelles that catalyze protein synthesis, consist of a small 40S subunit and a large 60S subunit. Together these subunits are composed of 4 RNA species and approximately 80 structurally distinct proteins. This gene encodes a cytoplasmic ribosomal protein that is a component of the 40S subunit. The protein belongs to the S6E family of ribosomal proteins. It is the major substrate of protein kinases in the ribosome, with subsets of five C-terminal serine residues phosphorylated by different protein kinases. Phosphorylation is induced by a wide range of stimuli, including growth factors, tumor-promoting agents, and mitogens. Dephosphorylation occurs at growth arrest. The protein may contribute to the control of cell growth and proliferation through the selective translation of particular classes of mRNA. As is typical for genes encoding ribosomal proteins, there are multiple processed
Function :	function:May play an important role in controlling cell growth and proliferation through the selective translation of particular classes of mRNA.,PTM:Ribosomal protein S6 is the major substrate of protein kinases in eukaryote ribosomes. The phosphorylation is stimulated by growth factors, tumor promoting agents, and mitogens. It is dephosphorylated at growth arrest.,similarity:Belongs to the ribosomal protein S6e family.,
Subcellular Location :	nucleus,nucleoplasm,nucleolus,cytoplasm,cytosol,ribosome,polysome,small ribosomal subunit,membrane,cytosolic small ribosomal subunit,dendrite,intracellular ribonucleoprotein complex,cytoplasmic ribonucleoprotein granu
Expression :	Brain,Colon,Colon adenocarcinoma,Epithelium,Muscle,Ovary,Pancreas,Placenta,Skin,Tes
Tag :	orthogonal
Sort :	1

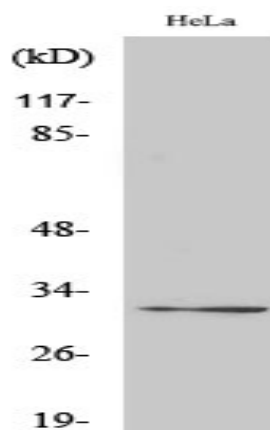
No4 :

1

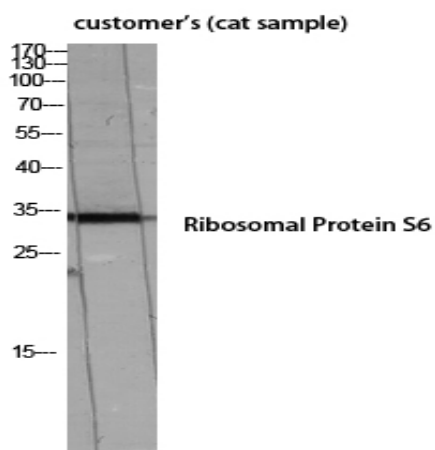
Products Images



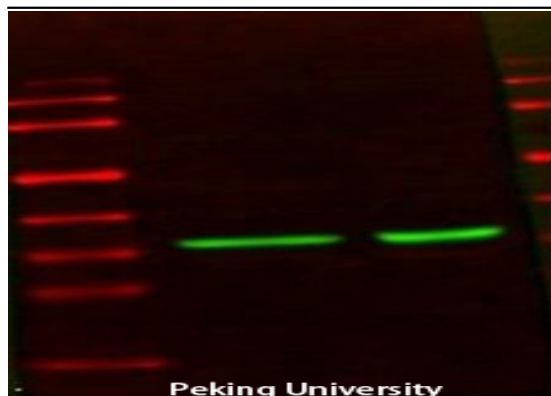
Western Blot analysis of various cells using Ribosomal Protein S6 Polyclonal Antibody diluted at 1:2000



Western Blot analysis of HeLa cells using Ribosomal Protein S6 Polyclonal Antibody diluted at 1:2000

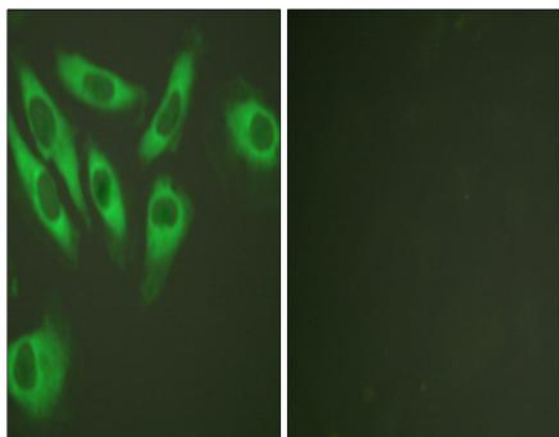


Western Blot analysis of customer's (cat sample) using Ribosomal Protein S6 Polyclonal Antibody diluted at 1:2000

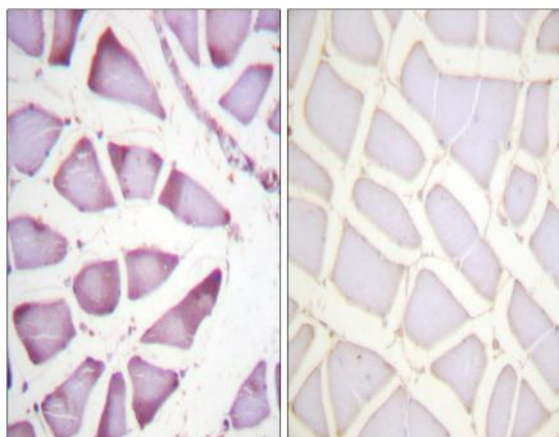


Rps6

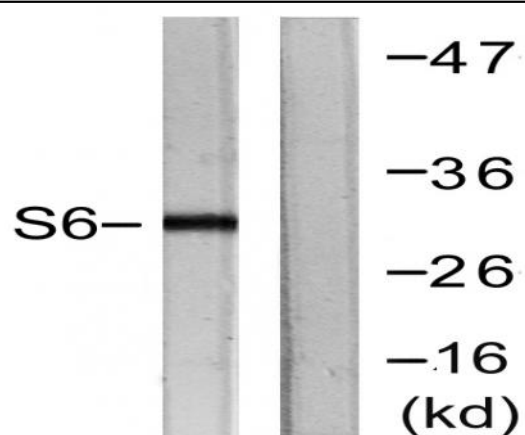
The picture was kindly provided by our customer



Immunofluorescence analysis of HeLa cells, using S6 Ribosomal Protein Antibody. The picture on the right is blocked with the synthesized peptide.



Immunohistochemistry analysis of paraffin-embedded human skeletal muscle tissue, using S6 Ribosomal Protein Antibody. The picture on the right is blocked with the synthesized peptide.



Western blot analysis of lysates from HeLa cells, treated with TNF- α 20ng/ml 2', using S6 Ribosomal Protein Antibody. The lane on the right is blocked with the synthesized peptide.