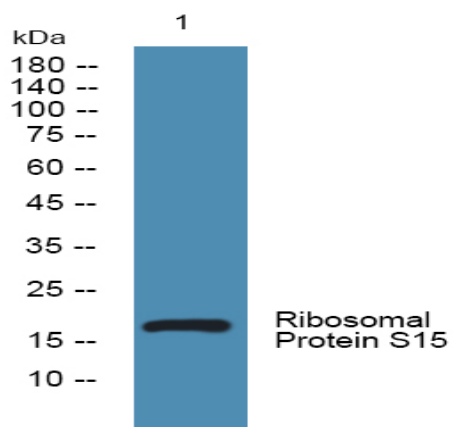


Ribosomal Protein S15 Polyclonal Antibody

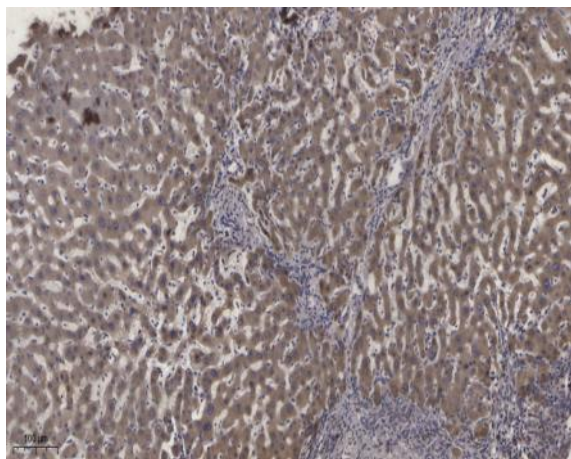
| | |
|------------------------------|---|
| Catalog No : | YT4124 |
| Reactivity : | Human;Mouse;Rat |
| Applications : | WB;ELISA;IHC |
| Target : | Ribosomal Protein S15 |
| Fields : | >>Ribosome;>>Coronavirus disease - COVID-19 |
| Gene Name : | RPS15 |
| Protein Name : | 40S ribosomal protein S15 |
| Human Gene Id : | 6209 |
| Human Swiss Prot No : | P62841 |
| Mouse Gene Id : | 20054 |
| Mouse Swiss Prot No : | P62843 |
| Rat Gene Id : | 29285 |
| Rat Swiss Prot No : | P62845 |
| Immunogen : | The antiserum was produced against synthesized peptide derived from human RPS15. AA range:41-90 |
| Specificity : | Ribosomal Protein S15 Polyclonal Antibody detects endogenous levels of Ribosomal Protein S15 protein. |
| Formulation : | Liquid in PBS containing 50% glycerol, 0.5% BSA and 0.02% sodium azide. |
| Source : | Polyclonal, Rabbit,IgG |
| Dilution : | WB 1:500-2000;IHC 1:50-300; ELISA 2000-20000 |

| | |
|-------------------------------|---|
| Purification : | The antibody was affinity-purified from rabbit antiserum by affinity-chromatography using epitope-specific immunogen. |
| Concentration : | 1 mg/ml |
| Storage Stability : | -15°C to -25°C/1 year(Do not lower than -25°C) |
| Observed Band : | 17kD |
| Cell Pathway : | Ribosome; |
| Background : | <p>Ribosomes, the organelles that catalyze protein synthesis, consist of a small 40S subunit and a large 60S subunit. Together these subunits are composed of 4 RNA species and approximately 80 structurally distinct proteins. This gene encodes a ribosomal protein that is a component of the 40S subunit. The protein belongs to the S19P family of ribosomal proteins. It is located in the cytoplasm. This gene has been found to be activated in various tumors, such as insulinomas, esophageal cancers, and colon cancers. As is typical for genes encoding ribosomal proteins, there are multiple processed pseudogenes of this gene dispersed through the genome. Alternative splicing results in multiple transcript variants. [provided by RefSeq, Apr 2015],</p> |
| Function : | similarity:Belongs to the ribosomal protein S19P family., |
| Subcellular Location : | nucleus,nucleoplasm,cytoplasm,cytosol,ribosome,focal adhesion,small ribosomal subunit,membrane,cytosolic small ribosomal subunit, |
| Expression : | Pancreas,Placenta, |
| Sort : | 14491 |
| No4 : | 1 |

Products Images



Western blot analysis of lysates from K562 cells, primary antibody was diluted at 1:1000, 4° over night



Immunohistochemical analysis of paraffin-embedded human liver cancer. 1, Antibody was diluted at 1:200(4° overnight). 2, Tris-EDTA,pH9.0 was used for antigen retrieval. 3,Secondary antibody was diluted at 1:200(room temperature, 45min).