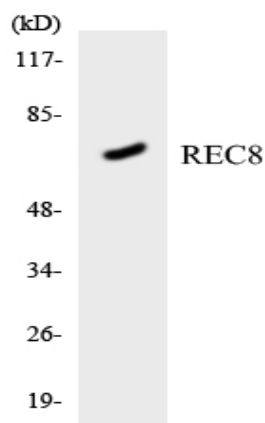


Rec8 Polyclonal Antibody

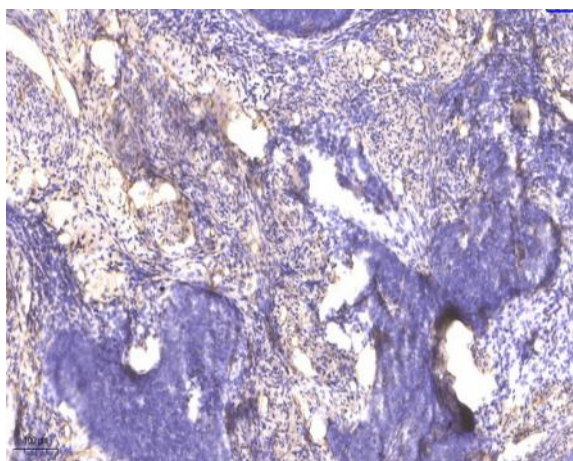
Catalog No :	YT4035
Reactivity :	Human;Rat;Mouse;
Applications :	WB;ELISA;IHC
Target :	Rec8
Fields :	>>Oocyte meiosis
Gene Name :	REC8
Protein Name :	Meiotic recombination protein REC8 homolog
Human Gene Id :	9985
Human Swiss Prot No :	O95072
Mouse Swiss Prot No :	Q8C5S7
Immunogen :	The antiserum was produced against synthesized peptide derived from human REC8. AA range:154-203
Specificity :	Rec8 Polyclonal Antibody detects endogenous levels of Rec8 protein.
Formulation :	Liquid in PBS containing 50% glycerol, 0.5% BSA and 0.02% sodium azide.
Source :	Polyclonal, Rabbit,IgG
Dilution :	WB 1:500-2000;IHC 1:50-300; ELISA 2000-20000
Purification :	The antibody was affinity-purified from rabbit antiserum by affinity-chromatography using epitope-specific immunogen.
Concentration :	1 mg/ml
Storage Stability :	-15°C to -25°C/1 year(Do not lower than -25°C)

Observed Band :	62kD
Cell Pathway :	Oocyte meiosis;
Background :	<p>This gene encodes a member of the kleisin family of SMC (structural maintenance of chromosome) protein partners. The protein localizes to the axial elements of chromosomes during meiosis in both oocytes and spermatocytes. In the mouse, the homologous protein is a key component of the meiotic cohesion complex, which regulates sister chromatid cohesion and recombination between homologous chromosomes. Multiple alternatively spliced variants, encoding the same protein, have been found for this gene. [provided by RefSeq, Jul 2008],</p>
Function :	<p>function:Required during meiosis for separation of sister chromatids and homologous chromosomes. Proteolytic cleavage of REC8 on chromosome arms by separin during anaphase I allows for homologous chromosome separation in meiosis I and cleavage of REC8 on centromeres during anaphase II allows for sister chromatid separation in meiosis II.,PTM:Phosphorylated.,similarity:Belongs to the rad21 family.,subcellular location:In meiotic chromosomes, localized along axial elements in prophase from the leptotene to diplotene stages. At later prophase stages, diakinesis and metaphase I, localized along interstitial axes of chromosomes including both centromere and arm regions. No longer detected in arm regions in anaphase I but persists on centromere regions until metaphase II.,subunit:Interacts in both phosphorylated and unphosphorylated forms with SMC3, SYCP3 and SMC1B but not with SMC1A. Also int</p>
Subcellular Location :	<p>Nucleus . Chromosome . Chromosome, centromere . In meiotic chromosomes, localized along axial elements in prophase from the leptotene to diplotene stages. At later prophase stages, diakinesis and metaphase I, localized along interstitial axes of chromosomes including both centromere and arm regions. No longer detected in arm regions in anaphase I but persists on centromere regions until metaphase II. Localized to centromeres and spindle poles in endopolyploid tumor cells. .</p>
Expression :	<p>Expressed in testis and thymus. Expressed in the B-cell lines WI-L2-NS and Namalwa (at protein level).</p>
Sort :	14070
No4 :	1

Products Images



Western blot analysis of the lysates from HT-29 cells using REC8 antibody.



Immunohistochemical analysis of paraffin-embedded human cervical carcinoma. 1, Antibody was diluted at 1:200(4° overnight). 2, Tris-EDTA,pH9.0 was used for antigen retrieval. 3,Secondary antibody was diluted at 1:200(room temperature, 45min).