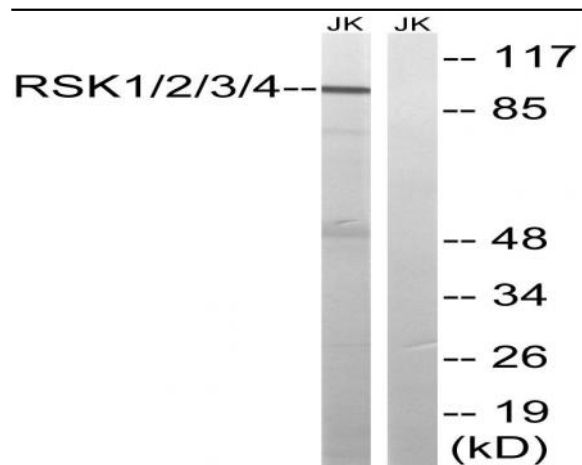


Rsk-1/2/3/4 Polyclonal Antibody

Catalog No :	YT4183
Reactivity :	Human;Mouse
Applications :	WB;ELISA
Target :	RSK1/2/3/4
Fields :	>>MAPK signaling pathway;>>Oocyte meiosis;>>mTOR signaling pathway;>>Thermogenesis;>>Long-term potentiation;>>Neurotrophin signaling pathway;>>Progesterone-mediated oocyte maturation;>>Insulin resistance;>>Yersinia infection;>>Chemical carcinogenesis - receptor activation
Gene Name :	RPS6KA1
Protein Name :	Ribosomal protein S6 kinase alpha-1
Human Gene Id :	6195/6197/6196/27330
Human Swiss Prot No :	Q15418/P51812/Q15349/Q9UK32
Mouse Gene Id :	110651/20112/67071
Immunogen :	The antiserum was produced against synthesized peptide derived from human RSK1/2/3/4. AA range:191-240
Specificity :	Rsk-1/2/3/4 Polyclonal Antibody detects endogenous levels of Rsk-1/2/3/4 protein.
Formulation :	Liquid in PBS containing 50% glycerol, 0.5% BSA and 0.02% sodium azide.
Source :	Polyclonal, Rabbit,IgG
Dilution :	WB 1:500 - 1:2000. ELISA: 1:20000. Not yet tested in other applications.
Purification :	The antibody was affinity-purified from rabbit antiserum by affinity-chromatography using epitope-specific immunogen.

Concentration :	1 mg/ml
Storage Stability :	-15°C to -25°C/1 year(Do not lower than -25°C)
Observed Band :	90kD
Cell Pathway :	Regulates Angiogenesis; Insulin Receptor; B Cell Receptor; AMPK
Background :	<p>ribosomal protein S6 kinase A1(RPS6KA1) Homo sapiens This gene encodes a member of the RSK (ribosomal S6 kinase) family of serine/threonine kinases. This kinase contains 2 nonidentical kinase catalytic domains and phosphorylates various substrates, including members of the mitogen-activated kinase (MAPK) signalling pathway. The activity of this protein has been implicated in controlling cell growth and differentiation. Alternate transcriptional splice variants, encoding different isoforms, have been characterized. [provided by RefSeq, Jul 2008],</p>
Function :	<p>catalytic activity:ATP + a protein = ADP + a phosphoprotein.,caution:The sequence shown here is derived from an Ensembl automatic analysis pipeline and should be considered as preliminary data.,cofactor:Magnesium.,enzyme regulation:Activated by multiple phosphorylations on threonine and serine residues.,function:Serine/threonine kinase that may play a role in mediating the growth-factor and stress induced activation of the transcription factor CREB.,PTM:Autophosphorylated on Ser-380, as part of the activation process.,similarity:Belongs to the protein kinase superfamily.,similarity:Belongs to the protein kinase superfamily. AGC Ser/Thr protein kinase family. S6 kinase subfamily.,similarity:Contains 1 AGC-kinase C-terminal domain.,similarity:Contains 2 protein kinase domains.,subunit:Forms a complex with either ERK1 or ERK2 in quiescent cells. Transiently dissociates following mitogenic s</p>
Subcellular Location :	Nucleus. Cytoplasm.
Expression :	Colon,Epithelium,
Sort :	14627
No4 :	1
Host :	Rabbit
Modifications :	Unmodified

Products Images



Western blot analysis of lysates from Jurkat cells, using RSK1/2/3/4 Antibody. The lane on the right is blocked with the synthesized peptide.