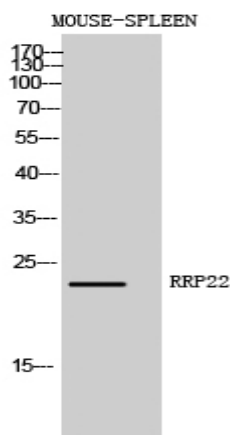


RRP22 Polyclonal Antibody

Catalog No :	YT4177
Reactivity :	Human;Mouse
Applications :	WB;ELISA
Target :	RRP22
Gene Name :	RASL10A
Protein Name :	Ras-like protein family member 10A
Human Gene Id :	10633
Human Swiss Prot No :	Q92737
Mouse Gene Id :	75668
Mouse Swiss Prot No :	Q8K5A4
Immunogen :	The antiserum was produced against synthesized peptide derived from human RASL10A. AA range:107-156
Specificity :	RRP22 Polyclonal Antibody detects endogenous levels of RRP22 protein.
Formulation :	Liquid in PBS containing 50% glycerol, 0.5% BSA and 0.02% sodium azide.
Source :	Polyclonal, Rabbit,IgG
Dilution :	WB 1:500 - 1:2000. ELISA: 1:40000. Not yet tested in other applications.
Purification :	The antibody was affinity-purified from rabbit antiserum by affinity-chromatography using epitope-specific immunogen.
Concentration :	1 mg/ml
Storage Stability :	-15°C to -25°C/1 year(Do not lower than -25°C)

Observed Band :	30kD
Background :	similarity:Belongs to the small GTPase superfamily. Ras family.,
Function :	similarity:Belongs to the small GTPase superfamily. Ras family.,
Subcellular Location :	Cell membrane ; Lipid-anchor ; Cytoplasmic side . Nucleus, nucleolus . May cycle in and out of the nucleolus in a GTP-dependent manner.
Expression :	Expression appears to be strictly limited to the central nervous system.
Sort :	14613
No4 :	1
Host :	Rabbit
Modifications :	Unmodified

Products Images



Western Blot analysis of MOUSE-SPLEEN cells using RRP22 Polyclonal Antibody diluted at 1:1000

