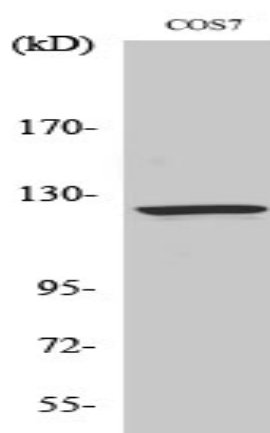


## Ran BP-6 Polyclonal Antibody

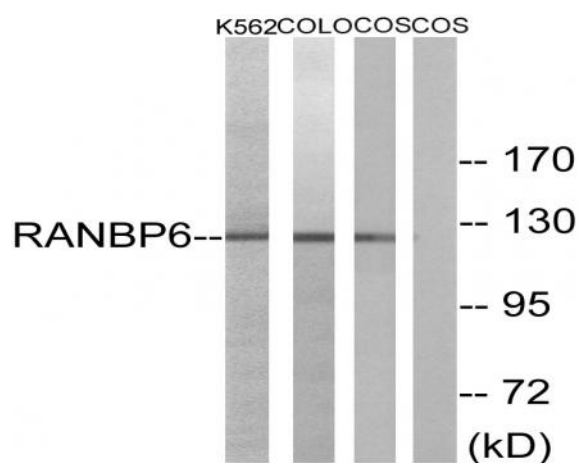
<b>Catalog No :</b>	YT4000
<b>Reactivity :</b>	Human;Mouse;Rat;Monkey
<b>Applications :</b>	WB;ELISA;IHC
<b>Target :</b>	Ran BP-6
<b>Gene Name :</b>	RANBP6
<b>Protein Name :</b>	Ran-binding protein 6
<b>Human Gene Id :</b>	26953
<b>Human Swiss Prot No :</b>	O60518
<b>Mouse Gene Id :</b>	240614
<b>Mouse Swiss Prot No :</b>	Q8BIV3
<b>Immunogen :</b>	The antiserum was produced against synthesized peptide derived from human RANBP6. AA range:800-849
<b>Specificity :</b>	Ran BP-6 Polyclonal Antibody detects endogenous levels of Ran BP-6 protein.
<b>Formulation :</b>	Liquid in PBS containing 50% glycerol, 0.5% BSA and 0.02% sodium azide.
<b>Source :</b>	Polyclonal, Rabbit,IgG
<b>Dilution :</b>	WB 1:500-2000;IHC 1:50-300; ELISA 2000-20000
<b>Purification :</b>	The antibody was affinity-purified from rabbit antiserum by affinity-chromatography using epitope-specific immunogen.
<b>Concentration :</b>	1 mg/ml
<b>Storage Stability :</b>	-15°C to -25°C/1 year(Do not lower than -25°C)

<b>Observed Band :</b>	125kD
<b>Background :</b>	function:May function in nuclear protein import as nuclear transport receptor.,similarity:Belongs to the importin beta family.,similarity:Contains 7 HEAT repeats.,
<b>Function :</b>	function:May function in nuclear protein import as nuclear transport receptor.,similarity:Belongs to the importin beta family.,similarity:Contains 7 HEAT repeats.,
<b>Subcellular Location :</b>	Cytoplasm . Nucleus .
<b>Expression :</b>	Endometrium,Kidney,Placenta,
<b>Sort :</b>	13809
<b>No4 :</b>	1

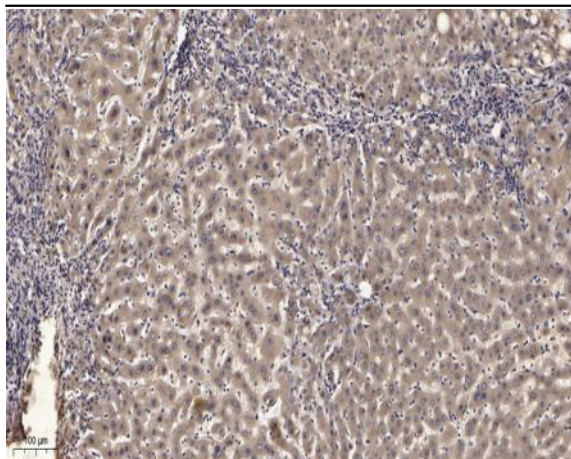
## Products Images



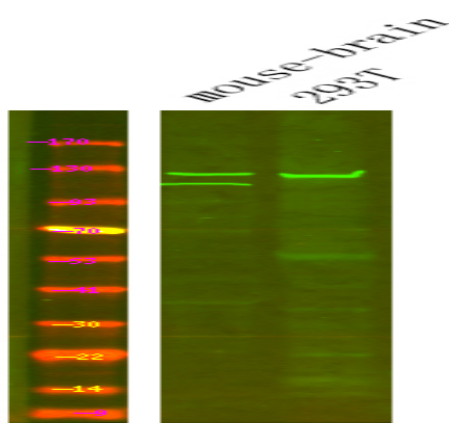
Western Blot analysis of various cells using Ran BP-6 Polyclonal Antibody



Western blot analysis of lysates from COS7, K562, and COLO cells, using RANBP6 Antibody. The lane on the right is blocked with the synthesized peptide.



Immunohistochemical analysis of paraffin-embedded human liver cancer. 1, Antibody was diluted at 1:200(4° overnight). 2, Tris-EDTA,pH9.0 was used for antigen retrieval. 3,Secondary antibody was diluted at 1:200(room temperature, 45min).



Western Blot analysis of Various cells using primary antibody at 1:1000 dilution 4°C, overnight. Secondary antibody(catalog#:RS23920) was diluted at 1:10000 25°C 1.5hours